



DN COLLEGES GROUP

**North Lindsey
College**

PROSPECTUS 2025 – 2026

Four young men are gathered outdoors, looking at a smartphone held by one of them. They are all smiling and appear to be in a relaxed, social setting. The man on the far left is wearing a grey t-shirt with 'VOLCANO CALIFORNIA 1985' printed on it. The man next to him is wearing a black hoodie with 'McLaren FORMULA 1 TEAM' printed on it and a black baseball cap. The man in the center is also wearing a black t-shirt with 'McLaren FORMULA 1 TEAM' printed on it. The man on the far right is wearing a light-colored t-shirt with a graphic design. They are all wearing lanyards. The background shows a blue building and green trees under a clear sky.

**WELCOME TO
NORTH LINDSEY
COLLEGE**
JOIN US!

**APPLY
NOW
ONLINE!**



<https://northlindsey.ac.uk/school-leavers>

CONTENTS PAGE

PRINCIPAL'S WELCOME	4	APPRENTICESHIPS	20
CAMPUS INVESTMENT	6	ANIMAL MANAGEMENT	24
CAREERS EDUCATION, INFORMATION, ADVICE & GUIDANCE	8	ART AND DESIGN	30
GCSE ENGLISH AND MATHS	9	BUSINESS MANAGEMENT	34
APPLICATION PROCESS	10	CATERING AND HOSPITALITY	38
ENRICHMENT OPPORTUNITIES	11	CONSTRUCTION	42
TRAVELLING TO COLLEGE	12	BRICKWORK, GROUNDWORK, PLASTERING, JOINERY, PLUMBING	
INTERNATIONAL OPPORTUNITIES	14	CREATIVE DIGITAL TECHNOLOGIES	50
THE DUKE OF EDINBURGH'S AWARD	16	CREATIVE MEDIA, CREATIVE MEDIA PRODUCTION, COMPUTER SCIENCE, GAMES DEVELOPMENT, COMPUTING	
PERSONAL DEVELOPMENT	18	EDUCATION AND EARLY YEARS	56
		ENGINEERING	60
		ELECTRICAL INSTALLATION, ELECTRICAL ENGINEERING, MECHANICAL ENGINEERING, FABRICATION AND WELDING	
		ENGLISH FOR SPEAKERS OF OTHER LANGUAGES (ESOL)	68
		SPEAKING, LISTENING, READING, WRITING	
		FOUNDATION STUDIES	74
		HAIRDRESSING AND BEAUTY THERAPY	78
		HAIRDRESSING, BEAUTY THERAPY, NAIL TECHNOLOGY	
		HEALTH AND SOCIAL CARE	84
		HEALTH AND SOCIAL CARE, HEALTH SCIENCE	
		HUMBER ENERGY SKILLS TRAINING ACADEMY	90
		MOTOR VEHICLE	94
		MUSIC	98
		PERFORMING ARTS	102
		ACTING, MUSICAL THEATRE, DANCE	
		SPORT, PHYSICAL ACTIVITY AND EXERCISE SCIENCE	108
		TRAVEL AND TOURISM	114
		UNIFORMED SERVICES AND POLICING	118
		UNIVERSITY CAMPUS NORTH LINCOLNSHIRE (UCNL)	124



PRINCIPAL'S WELCOME

Welcome and thank you for your interest in North Lindsey College. Our 2025/2026 prospectus showcases our sector-leading facilities, the support available from our fabulous staff, and the wide range of opportunities, subjects, and levels we deliver.

In March 2022 Ofsted recognised us as a good provider with four outstanding grades, including the provision for our young people, for students with high needs, and for the personal development we offer to our students at the College.

We recognise that students will take different routes to reach their personal and professional goals. We offer a wide range of study options, including studying on a full-time course, learning whilst working on a high-quality apprenticeship, or heading to higher education after the age of eighteen. Whatever route you take, we want you to enjoy your time with us and become an active member of our College community.

To maximise your chances of success, we believe that good attendance and punctuality are important and will be essential for you.

This is not only important for learning on your course to ensure the best possible grades but is also highly valuable preparation for your future working life.

You will all be aware of the importance of attaining maths and English to a good standard and we will continue to support you to achieve those qualifications if you haven't already done so.

There are many opportunities to get involved in College activities and our community and to make your voice heard. These include becoming a Student Governor, Student Rep, taking part in trips, clubs and societies,

WorldSkills UK events, internal College leagues, The Duke of Edinburgh's Awards Scheme and much more.

You can expect us to provide you with great teaching and learning, as well as wider wrap around support to enable you to succeed.

We wish you all the best and look forward to seeing you around the College in the future.



John Rees
CEO and Principal on behalf of the Senior Leadership Team



**“LEADERS HAVE
SUCCESSFULLY
CREATED AND
REALISED A VISION...
TO PROVIDE HIGH-
QUALITY EDUCATION
THAT CONSISTENTLY
MEETS LOCAL
COMMUNITY
AND REGIONAL
EMPLOYMENT NEEDS,
PARTICULARLY IN
AREAS WHERE THERE
IS HIGH ECONOMIC
AND SOCIAL
DEPRIVATION.”**

CAMPUS INVESTMENT

We are investing in our campus which will see a brand-new build that is expected to be completed in Summer 2025. Demolition of the redundant building will then commence with all building works complete in Spring 2026.

The project has been carefully planned to ensure that the College can remain fully operational throughout construction.

The project involves the part-demolition of the existing College buildings, and construction of a new net zero carbon in operation education facility to replace the current ageing teaching buildings. The new build will be the main central space housing the new dining area, Learning Resource Centre (LRC) and auditorium, teaching spaces, specialist science laboratories, new training kitchens and dedicated SEN department.

Images by Bond Bryan Architects





OPENING 2025



CAREERS EDUCATION, INFORMATION, ADVICE AND GUIDANCE (CEIAG)

We pride ourselves on offering impartial and unbiased CEIAG to help you with your College and course choice.

It is important you receive careers advice before selecting your course option, so you fully understand how the qualifications you apply for will help you in the future.

Getting the right advice will help you make the right choices for you. Everyone is different, so the advice given to one person will not be useful for others (such as friends or family members); so individual careers advice is something you should get.

During your careers appointment we will discuss subject entry requirements, careers you can use the qualifications for, and how best to prepare for your transition to College.

THE CEIAG TEAM CAN HELP YOU:

- Find out about courses on offer
- Help you recognise the skills you already have and what additional skills we can help you develop
- Create an action plan to help you take your next steps

CONTACT THE CEIAG TEAM FOR:

- A one-to-one appointment
- A personalised College tour

Call: (01724) 294030

Email:

careersguidance@northlindsey.ac.uk

Alternatively, use the Live Chat function on our website: northlindsey.ac.uk to talk to our team, please remember to include your phone number.

We use and implement the Gatsby Benchmarks to provide Good Careers Guidance: <https://www.gatsby.org.uk/education/focus-areas/good-career-guidance>

We hold Matrix quality standard for Information Advice and Guidance services; <https://matrixstandard.com>



“Learners and apprentices benefit from very comprehensive and helpful careers advice and information. They are made aware of the many opportunities available to them and the next steps that they can take. They receive very effective support and guidance from the beginning of their programme from specialist staff who also support them with university and higher-level apprenticeship applications.”
- Ofsted

GCSE ENGLISH & MATHS

We aim to ensure that all learners improve their confidence and competence in English and maths skills sufficiently enough so that they can thrive in their academic or vocational ambitions and in many aspects of their personal life. As such, English and maths are an essential part of your studies here at North Lindsey College.

Employers and universities really value these key qualifications, so it is important we help you achieve them. If you do not have a pass in either or both subjects, then do not worry!

As a mandatory part of your programme of study, you will work towards achieving a GCSE grade 9–4 (A*–C) with the help of our specialist tutors, alongside studying your chosen subject with us. If you have a grade 3–1 in either or both subjects, you will be enrolled onto our GCSE programme. If this is not the case, our staff will assess your current level and you may be enrolled onto a more suitable Functional Skills Programme, which will still teach you the same skills needed for everyday life, studies and employment.

Learners who have achieved a grade 4 or above in English and maths will continue to develop their skills via the embedding of English and maths in their main aim curriculum lessons.

WHY STUDY ENGLISH & MATHS?

These skills can help you understand your finances, communication, and help you gain a better understanding of current issues, including politics and current affairs as well as supporting you to excel in your main aim and then into the world of work. Not having these qualifications can sometimes be a real barrier for the future.

Most employers and universities look for at least a grade 4 (C) in GCSE English and maths.

Increase your potential earnings: People with good GCSE grades in English and maths earn approximately **£2,000 more** per year than those who do not!



APPLICATION PROCESS


1

2

3
APPLY
INTERVIEW
ENROL
**APPLY
NOW
ONLINE!**

<https://northlindsey.ac.uk/school-leavers>

1. APPLY

You can do this online by scanning the QR code, or ask for a paper application form through your school, your college or by dropping in to see us.

2. INTERVIEW

Once we have your application you will be invited into College for an informal interview with your tutor.

3. ENROL

This normally takes place on GCSE results day, so expect to come into College towards the end of August 2024 to complete the application process.

In between those three steps, there are plenty of opportunities to come onto campus to meet the tutors, see our facilities and get to know us some more! Check out our Open Events on the back page.

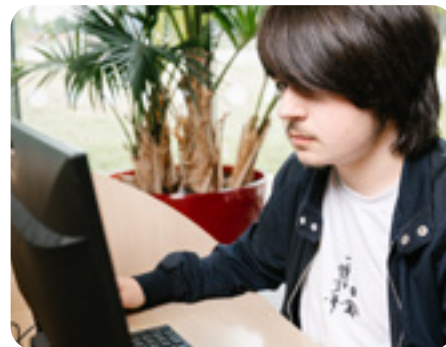
ONE SUBJECT

Most Level 3 subjects here at North Lindsey College are equivalent to three A Levels, so when you apply to study with us at this level you only need one subject.

Within that subject you will gain the UCAS points needed to progress to university, so unlike other colleges where you perhaps study three A Levels to gain the right UCAS points, here you only need one.

GCSE ENGLISH & MATHS

If you do not have the GCSE grades to progress to a Level 3 qualification you will be able to resit your English and maths here at North Lindsey College. To combine that with a Level 2 qualification of your choice to enable you to step up to a Level 3 the following year (see page 9 for more information on re-studying your GCSE).



ENRICHMENT OPPORTUNITIES

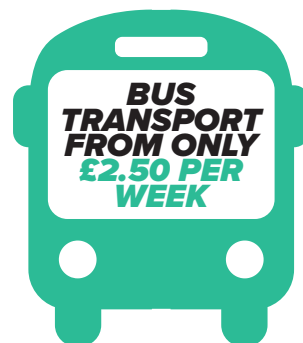
We believe enrichments develop key social and employability skills, as well as technical skills.

As a student at North Lindsey College, you will have access to a diverse array of additional opportunities aimed at enhancing your overall college experience.

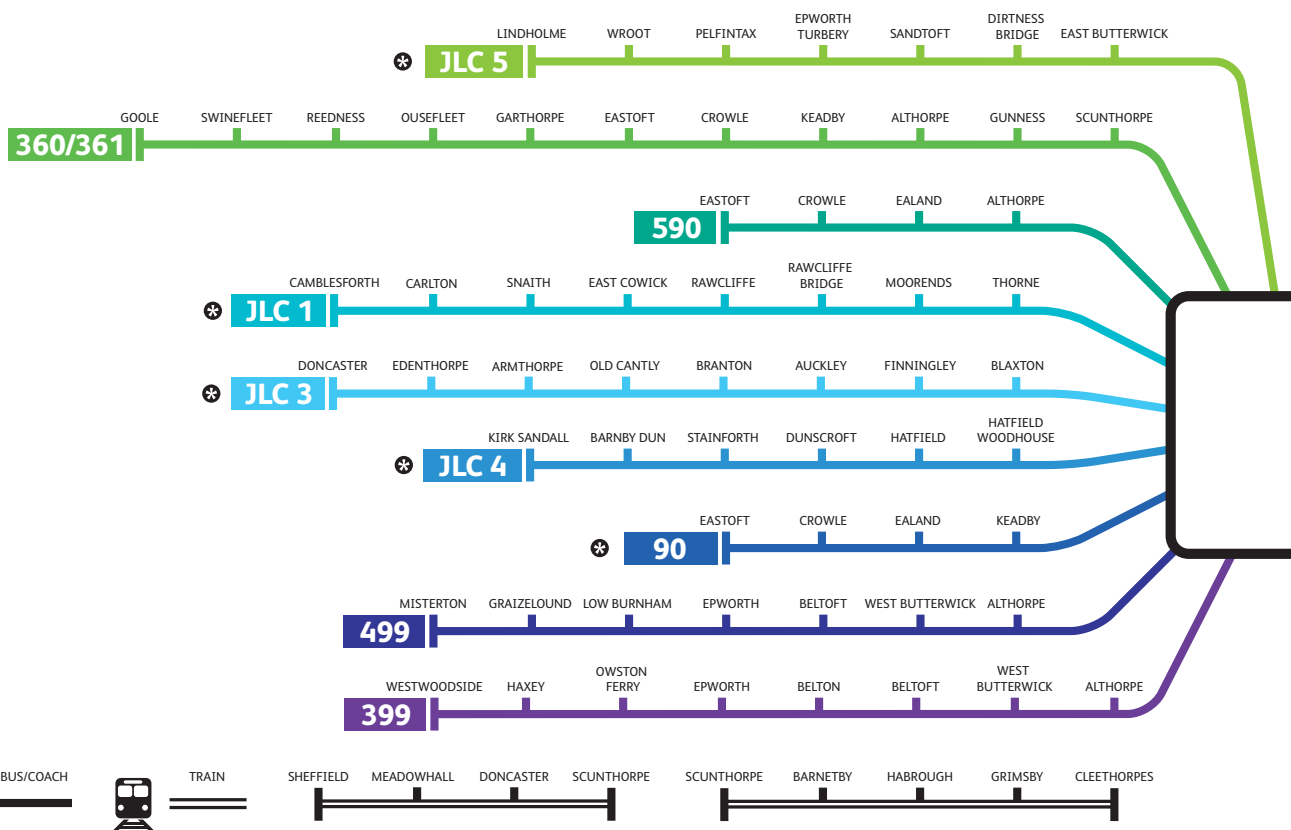
These enrichments are designed to cultivate essential social, employability, and technical skills that will not only enrich your time at college but also prepare you for future career endeavours.



TRAVELLING TO COLLEGE



Our transport scheme means that students can travel for only £2.50 per week. This might be free depending on your financial circumstances.



You don't need to worry about how you will get to College. Our students can access routes covering a wide range of areas including *(and everywhere in-between)*:

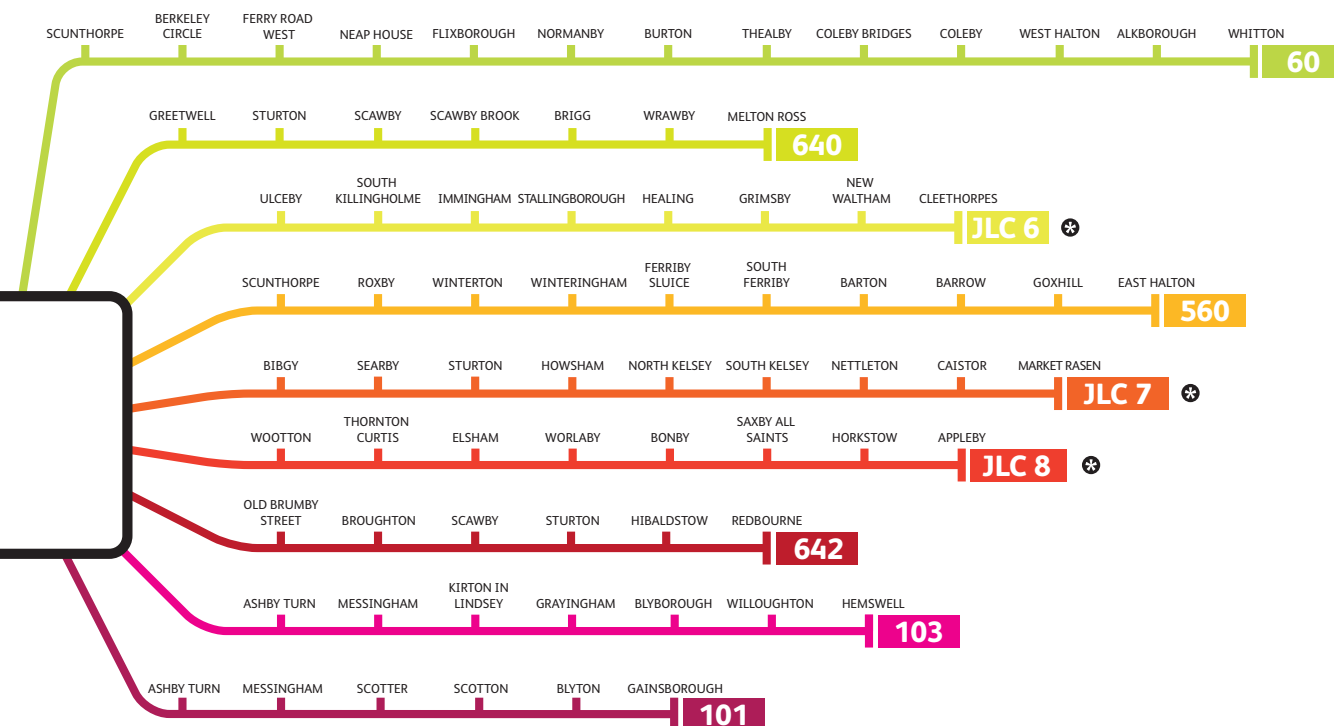
- Scunthorpe
- Gainsborough
- Grimsby
- Immingham
- Goole
- Barton
- Isle of Axholme
- Cleethorpes
- Brigg

If you are aged between 16 to 18 and live over three miles from us, your bus transport is only £90 for the year. If you're eligible for Financial Assistance, you could even get this refunded, making it a free pass!

If you are over 19 and live over three miles from us, you do not qualify for a bus pass however we can support you with the travel costs through the College's Financial Assistance Fund. We can support with bus/train tickets, or petrol costs dependant on your mode of transport.

If you're unsure about the route you need to take, how to apply for your bus pass or have any other concerns about travel, please **get in touch!**

01724 294179
financial.support@northlindsey.ac.uk



Routes subject to change, for up to date information please call **01724 294179** or email financial.support@northlindsey.ac.uk

✱ Places on this bus are available upon request.

INTERNATIONAL OPPORTUNITIES

We believe that international work experience is a fantastic opportunity to develop both your personal and professional skills, whilst experiencing work and life in a whole new culture.

This is why we work with the Turing Scheme; to be part of their exchanges, giving you the opportunity of a lifetime to work abroad with one of our many partner colleges and organisations in the following countries:

- Fiji
- Finland
- France
- Germany
- Greece
- Indonesia
- Netherlands
- Portugal
- Spain
- St Lucia
- USA

This UK government scheme provides funding for international education and training around the world. Students, including those on an apprenticeship, can study, work, and take part in skills competitions abroad. Our international team will be happy to help guide you through the process and the opportunities available. Ask your tutor when you start, or email:

international.team@dncolleges.ac.uk





THE DUKE OF EDINBURGH'S AWARD

Taking part in a DofE journey will give you skills, confidence, and something to talk about when you apply for college, university or a job.

Beyond your academic achievements, universities want to see evidence of 'soft skills' that you have developed through extra-curricular activities, such as communication, commitment, leadership and teamwork. Your DofE Award is a fantastic way to demonstrate and evidence these skills in practice.

Since offering the DofE award in 2017, we have had over 1700 students at DN Colleges Group take part in a DofE award with engagement numbers rising each year.

You will complete your award within your college timetable and be given step by step support from your course tutors and the DofE team.

Have an opportunity to get involved with volunteering, playing new activities, such as benchball and dodgeball. and further develop on your soft skills preparing for employment.

At the end of the year, you will have an opportunity to complete your camping and hiking expedition which is the area students most look forward to.

You will learn all the skills to prepare you for expedition and receive full support through completing other sections of your award from our in-house DofE team. What are you waiting for.... step outside your comfort zone, meet new friends and become a new you.



NORTH LINDSEY COLLEGE



LAYLA HARRISON

Travel and Tourism

“THE DUKE OF EDINBURGH’S EXPERIENCE BROUGHT ME OUT OF MY COMFORT ZONE IN THE BEST WAY POSSIBLE. I HAD LOTS OF FUN THROUGHOUT BOTH DAYS OF MY EXPEDITION, AS WELL AS THE TRAINING. I BUILT STRONGER CONNECTIONS WITH MY FRIENDS AND LEARNT HOW TO WORK WELL AS A TEAM BY LEARNING HOW TO TAKE EVERYONE’S IDEAS AND POINTS INTO CONSIDERATION. OVERALL, I HAD THE BEST EXPERIENCE EVER WHEN COMPLETING THE DUKE OF EDINBURGH’S BRONZE AWARD AND IT IS AN EXPERIENCE I WON’T EVER FORGET!”

PERSONAL DEVELOPMENT

PERSONAL DEVELOPMENT

As a North Lindsey College student, you will benefit from access to skills building as part of your programme of study, and plenty of support to help you throughout your time at College.

STUDENT SUPPORT

Student Services underpins the delivery of personal development, behaviour, and attitudes, guiding and supporting you on your journey. They work collaboratively with you to set goals, monitor attendance and guide you through your learning journey.

We want every student to be physically, emotionally, and socially well. We offer a range of activities and support around health and wellbeing alongside providing 1-2-1 support through our wellbeing offer.

Weekly facilitated Personal Development sessions take place which are built around a Personal Development Scheme of Learning consisting of five core modules (Safeguarding, Prevent & British Values; Online Safety; Health & Wellbeing; Money Matters and Preparing for Work/ Further Learning).

WELLBEING, COUNSELLING AND SAFEGUARDING

Our welfare team has a wealth of experience working with students facing difficulties and challenging situations in their personal life or at College. We are committed to supporting and safeguarding all our students and apprentices.

YOUNG ENTERPRISE CENTRE OF EXCELLENCE

The goal is that you leave College with the knowledge, skills, and confidence to be able to make informed and independent financial decisions for your future. Financial education is embedded within the Personal Development Scheme of Learning.

WHITE RIBBON ACCREDITATION

DN Colleges Group is pleased to have joined an increasing number of organisations that have made a public commitment to ending male violence against women.

“LEARNERS AND APPRENTICES FULLY BENEFIT FROM AN EXTENSIVE RANGE OF INTERESTING AND EXCITING ENRICHMENT ACTIVITIES, SUCH AS PARTICIPATING IN SPORTS, TAKING PART IN GAMING COMPETITIONS, AND ACCESSING HIGHLY RELEVANT WORK PLACEMENTS.”

Ofsted Graded Outstanding: Personal Development

For more information, please email wellbeing.centre@dncolleges.ac.uk



20 APPRENTICESHIPS

As an Ofsted graded 'Good' provider with 'Outstanding' elements, DN Colleges Group is one of the largest Further Education College providers of apprenticeships in England, working with over 800 employers across many sectors. Our provision has grown year on year in both size and breadth of offer, with over 100 standards to choose from.

CAREER OPPORTUNITIES

Marketing Executive

£20,000 to £50,000

Wind Turbine Technician

£25,000 to £47,000

Carpenter/Joiner

£17,000 to £38,000

Senior Care Worker

£17,000 to £27,000

LMI Data from the National Careers Service
June 2024

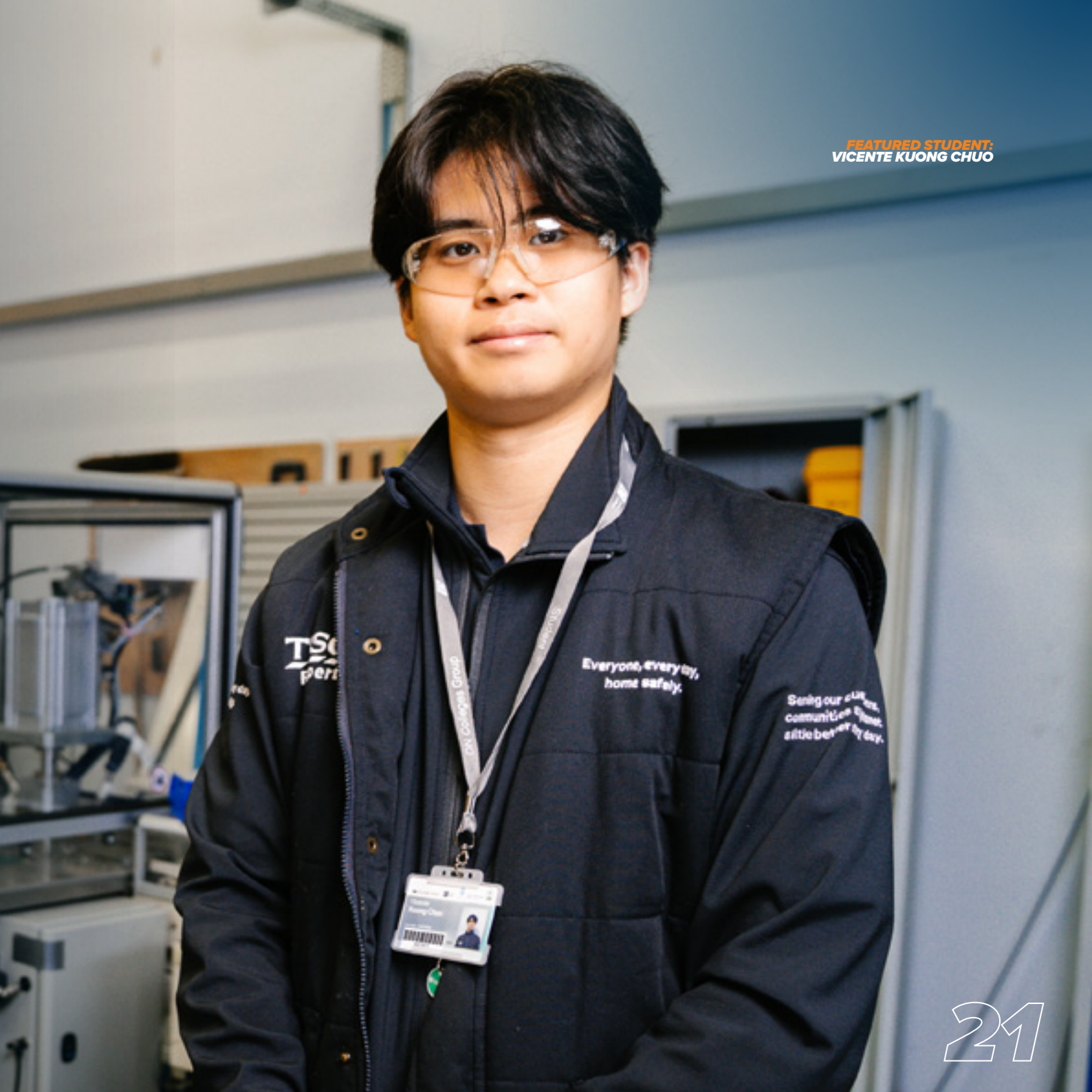
We work with some of the largest employers in the country who choose DN Colleges Group as their preferred provider of high-quality apprenticeships.

WHAT IS AN APPRENTICESHIP?

An apprenticeship offers you the chance to study and work at the same time. This allows you to earn a wage whilst gaining qualifications and valuable industry experience.

Unlike most traditional full-time courses, DN Colleges Group offer 'roll-on roll-off' programmes, which means there are opportunities to enrol at various points throughout the academic year.

FEATURED STUDENT:
VICENTE KUONG CHUO



22 APPRENTICESHIPS

WHEN CAN I APPLY FOR AN APPRENTICESHIP?

You can apply for an apprenticeship at any stage including:

- When you leave school
 - During an existing course if you choose to swap programmes
 - After leaving college
 - As an adult learner later in your career
 - Via the UCAS website
 - By visiting 'find an apprenticeship' service website
- Find an apprenticeship - GOV. UK (www.gov.uk)

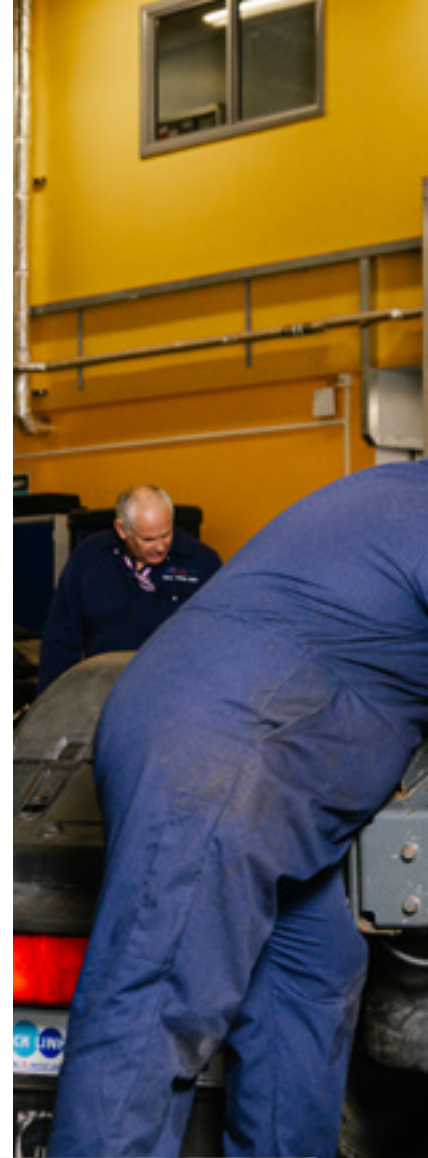
As an apprenticeship is a job with training, the key to initial success is being able to research opportunities and ensure you prepare well for apprenticeship interviews with employers.

HOW DO I FIND OUT ABOUT APPRENTICESHIP OPPORTUNITIES?

Our team at North Lindsey College can help you identify the type of apprenticeship you would be interested in. We have close links with local employers that may require apprentices. We advertise vacancies on our website, as well as on the National Apprenticeship Service website. We also keep in touch with individuals we know are interested in apprenticeships to make sure they know about upcoming vacancies.

WHAT ARE THE BENEFITS OF AN APPRENTICESHIP?

- Gain a nationally recognised qualification that can lead to higher education and further study, as well as improving your career prospects.
- Earn whilst you learn - apprentices are paid at least the national minimum wage, with many employers paying more.
- No student loan - you can do a higher apprenticeship including higher qualifications, such as a degree, but without needing a student loan.
- Apprentices are fully equipped for the world of work, developing other work skills such as communication, teamwork, and accountability.
- Getting into employment earlier means there's potential for you to progress in your career quickly and increase your earning potential.
- Whilst on your apprenticeship, you will be an employee of a company and entitled to the same benefits as other staff, including holidays.





STUDENT PROFILE

ALICE READMAN



"Formerly a St. Bede's Catholic Voluntary Academy student, Alice completed a Level 3 AAT (Association of Accounting Technicians) apprenticeship through North Lindsey College in 2019 after feeling uncertain about progressing to university/recognising a degree might not be for her.

After completing her apprenticeship with British Steel, Alice relocated to Leeds to work for a Top 10 global accounting firm.

"I GAINED VALUABLE ON-THE-JOB EXPERIENCE THAT YOU MIGHT NOT NECESSARILY GET AT UNIVERSITY. PLUS, I DON'T HAVE THE BURDEN OF UNIVERSITY DEBT, AND I'VE ACQUIRED MANY VALUABLE LIFE SKILLS ALONG THE WAY. IT IS DEFINITELY A PATHWAY WORTH CONSIDERING."

MORE INFORMATION

If you would like more information regarding apprenticeships, please contact the Apprenticeship Hotline on: **0800 3587979** or by emailing **employertraining@dncolleges.ac.uk**

Scan QR Code for an up to date list of our courses and to apply online!



24 **ANIMAL MANAGEMENT**

With over 60 different animal species on our campus, there's no better place to study animal management in North Lincolnshire!

CAREER OPPORTUNITIES

Ecologist

£22,000 to £42,000

Veterinary Physiotherapist

£24,000 to £38,000

Veterinary Nurse

£20,000 to £31,000

Zookeeper

£14,000 to £25,000

At North Lindsey College, our students thrive under the guidance of an exceptional team of animal industry professionals. Imagine learning from a qualified veterinary nurse, a zookeeper, a marine biologist, a canine behaviourist, and an award-winning Crafts exhibitionist.

What does this mean for you? You will gain insights from true industry experts while enjoying hands-on experiences with a diverse array of animals, from Golden Guernsey goats to marmoset monkeys and meerkats.

Our strong industry connections also provide you with invaluable work experience that will make your CV shine, giving you a significant edge in your UCAS application and future career opportunities.

LMI Data from the National Careers Service
June 2024

FEATURED STUDENT:
CONNOR MCIVER



26 ANIMAL MANAGEMENT

LEVEL 1

AWARD IN LAND BASED STUDIES

Course Duration: **1 Year**

Assessment: **75% Portfolio 25% Exam**

Entry Requirements: **4 GCSEs at grade 3-1 or an entry level qualification**

Units you may study include:

- Safe and effective working practices
- Assisting with maintaining the health and wellbeing of animals
- Animals in the wild and in society
- Assisting with feeding and watering animals
- Practical handling and husbandry
- Animal care
- Employability skills

Progression routes include:

- Level 2
- Employment
- Apprenticeship

LEVEL 2

EXTENDED CERTIFICATE IN ANIMAL CARE

Course Duration: **1 Year**

Assessment: **100% Coursework**

Entry Requirements: **4 GCSEs at grade 9-3 or grade A*- D including maths or English, or a Level 1 qualification**

Units you may study include:

- Maintaining animal health and welfare
- Maintaining animal accommodation
- Undertake practical animal feeding
- Introduction to the principles and practices of animal behaviour and handling
- Employability skills
- Practical handling and husbandry

Progression routes include:

- Level 3
- Employment
- Apprenticeship

TECHNICAL LEVEL 2

CERTIFICATE IN ANIMAL CARE

Course Duration: **1 Year**

Assessment: **40% Exam 60% Coursework**

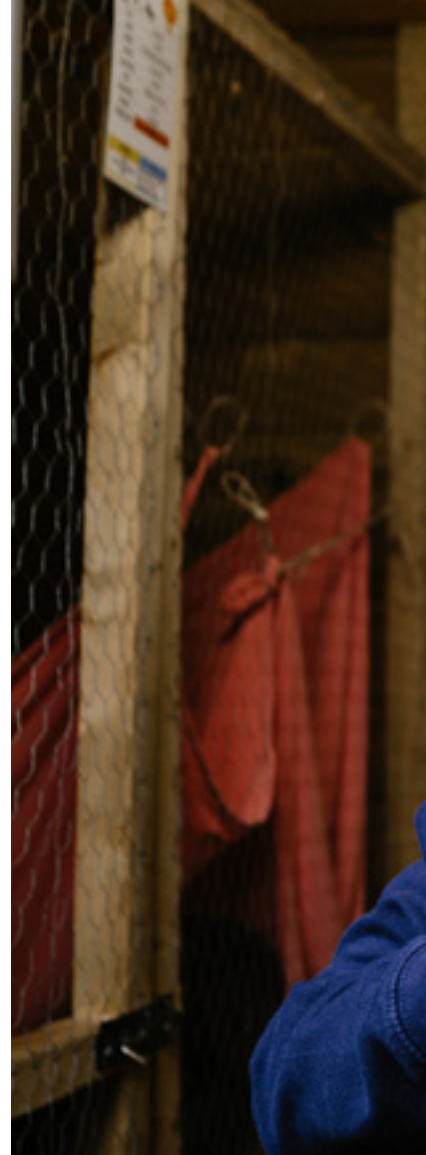
Entry Requirements: **4 GCSEs or a Level 1 qualification**

Units you may study include:

- Maintaining animal health and welfare
- Animal feeding and accommodation
- Animal behaviour and handling
- Working in the animal care industry
- Health and safety for the land-based industries
- The principles of animal biology
- Animal nursing
- Caring for zoo animals
- Employability skills
- Practical handling and husbandry
- 150 hours' industry experience

Progression routes include:

- Level 3
- Employment
- Apprenticeship





STUDENT PROFILE

DAMIAN BELTON



Damian chose to study at North Lindsey College because of his desire to work with animals and the facilities available on campus. The bus service to and from the College also helped him with his commute into Scunthorpe which he found beneficial. Having just completed his FdSc in Animal Welfare Science at the University Campus of North Lincolnshire (UCNL), Damian is continuing with his studies on the BSc (Hons) in Applied Animal Welfare Science. Over the past two years, he has had the privilege of serving as a student representative at the university campus, a role he is eager to continue during his final BSc year.

“NORTH LINDSEY COLLEGE WAS ONE OF THE FIRST PLACES I STARTED TO BE AUTHENTICALLY ME, IN A PUBLIC SETTING. PLUS, I GOT TO HUG A SKUNK, SO IT WAS PRETTY GOOD COMPARED TO OTHER COLLEGES I VISITED.”

CAREERS

- Animal Technician
- Animal Welfare Assistant
- Cattery Worker
- Dog Handler
- Kennel Worker
- Pet Behaviour Counsellor
- Pet Food Sales Manager
- Pet Shop Assistant
- Zoo Keeper
- RSPCA Inspector
- Canine Trainer
- Dog Groomer
- Dog Walker
- Marine Biologist
- Veterinary Nurse
- Zoologist
- and much more...

Scan QR Code for an up to date list of our courses and to apply online!



28 ANIMAL MANAGEMENT

TECHNICAL LEVEL 3

ADVANCED DIPLOMA IN ANIMAL MANAGEMENT

Course Duration: **1 Year**

Assessment: **60% Coursework
40% Exam**

Entry Requirements: **5 GCSEs
including English and Maths or a
Level 2 qualification**

Equivalent to **three A Levels**

Units you may study include:

- Animal health and husbandry
- Animal behaviour and communication
- Animal feeding and nutrition
- Biological systems of animals
- Business management
- Wildlife and ecology
- Animal nursing
- Animal training
- Estate skills
- Pet store management
- Zoological collections
- Exotic animal health
- Principles of health and safety
- Employability skills
- 150 hours' industry experience

Progression routes include:

- University
- Employment
- Apprenticeship
- Progression to University
Campus North Lincolnshire
(UCNL)

T-LEVELS

THE NEXT LEVEL QUALIFICATION

T LEVEL

ANIMAL CARE AND MANAGEMENT

Course Duration: **2 Years**

Entry Requirements: **5 GCSEs including English and maths**

Equivalent to **three A Levels**

During the two year programme, students will learn the core knowledge and skills that are needed for entry to a range of animal care and management occupations. The T Level in Animal Care and Management will be available from September 2024. The course will include a substantial industry placement.

Progression routes include:

- University
- Employment
- Apprenticeship
- Progression to University Campus North Lincolnshire (UCNL)





30 ART & DESIGN

If you dream of turning your artistic talent into a career, our art and design department is the perfect place for you!

CAREER OPPORTUNITIES

Fashion Designer

£20,000 to £40,000

Graphic Designer

£20,000 to £40,000

Museum Curator

£18,000 to £40,000

Illustrator

Variable

Our students hone their skills and unique styles in custom art workshops. We promote independent thinking and provide exciting work experience opportunities and insights from our tutors, many of whom are active artists.

Experience your learning come alive through public exhibitions, hands-on work experience, and national and regional competitions, along with inspiring trips and visits. We also invite special guest tutors to deliver engaging talks and workshops, boosting your knowledge, confidence, and practical skills.

Our top-notch facilities include fully equipped workshops with screen printing, a 3D workshop, high-spec drawing tablets, and specialist digital equipment.

Specialisms: fine art, illustration, fashion design, graphic design, textiles and surface design, sculpture, interior or exterior design and product design.

LMI Data from the National Careers Service
June 2024

FEATURED STUDENT:
ABI SHAW



LEVEL 2

UAL AWARD IN ART & DESIGN

Course Duration: **1 Year**

Assessment: **100% Coursework**

Entry requirements: **There are no formal entry requirements however, students must be able to demonstrate prior knowledge and a competent level or skill at interview**

Units you may study include:

- Introduction to materials, processes and technical skills in art and design
- Introduction to contextual research in art and design
- Final major project

Progression routes include:

- UAL Level 2 Diploma in Art & Design
- Employment
- Apprenticeship

LEVEL 2

UAL DIPLOMA IN ART & DESIGN

Course Duration: **1 Year**

Assessment: **100% Coursework**

Entry Requirements: **4 GCSEs graded 3 or above including maths, English and a creative subject**

Units you may study include:

- Introduction to materials, processes and technical skills in art and design
- Introduction to contextual research in art and design
- Introduction to drawing skills
- Introduction to communication skills in art and design
- Solving 2D creative problems
- Solving 3D creative problems
- Solving time-based creative problems
- Developing and producing a personal project in art and design
- Subjects including painting, drawing, printmaking, 3D design, sculpture, textiles, illustration and animation

Progression routes include:

- UAL Level 3 Applied General Diploma in Art & Design
- Employment
- Apprenticeship

LEVEL 3

UAL APPLIED GENERAL DIPLOMA IN ART & DESIGN

Course Duration: **1 Year**

Assessment: **100% Coursework with external assessment**

Entry Requirements: **4 GCSEs graded 4 and above including maths, English and a creative subject**

Units you may study include:

- Diagnostic investigation in art and design

Progression routes include:

- UAL Level 3 Applied General Extended Diploma in Art & Design
- Employment
- Apprenticeship

LEVEL 3

UAL APPLIED GENERAL EXTENDED DIPLOMA IN ART & DESIGN

Course Duration: **1 Year**

Assessment: **100% Coursework**

Entry Requirements: **Level 3 Applied General Diploma in Art & Design or equivalent qualification**

Units you may study include:

- Specialist practice in art and design

Progression routes include:

- University
- Employment
- Apprenticeship

ual: awarding body





STUDENT PROFILE



MAISIE PARR

Former Baysgarth School student, Maisie (20) completed our Level 3 Extended Diploma in Art and Design in 2021 and is now in her final year at university where she is studying Interior Architecture and Design, with aims of becoming an Interior Architect and Designer for hotels.

As a part of her degree, Maisie seized the opportunity to live in Malaysia on a cultural exchange programme, where she studied at INTI University.

“I REALLY ENJOYED MY COURSE AS IT GAVE ME SO MUCH CONFIDENCE TOWARDS MY WORK. THE FACILITIES WITHIN THE ART DEPARTMENT PRETTY MUCH GAVE FREE REIGN TO DO WHAT I WANTED WITHIN MY PROJECTS AND THE LIVE CLIENTS THAT WE HAD GAVE ME A SMALL SENSE IN THE REAL LIFE INDUSTRY.”

CAREERS

- Illustrator
- Art Gallery Curator
- Costume Designer
- Fine Artist
- Fashion Retail Or Buyer
- Graphic Designer
- Teacher
- TV & Film Set Designer
- Retail Visual Merchandiser
- Textile Designer
- Art Director
- Architect
- Arts Events Co-Ordinator
- Ceramics Designer
- Exhibition Designer
- Product Designer
- Landscape Architect
- Special Effects
- Tattoo Artist
- Surface Designer
- Portrait Artist
- Animator
- and much more...

Scan QR Code for an up to date list of our courses and to apply online!



34 **BUSINESS MANAGEMENT**

The Humber region is bustling. There are more than 41,600 local jobs in the business sector, accounting for 15% of jobs in the region.

CAREER OPPORTUNITIES

Management Accountant

£30,000 to £60,000

Customer Services Manager

£21,000 to £50,000

Human Resources Officer

£21,000 to £50,000

Marketing Executive

£20,000 to £50,000

Our diverse programmes pave the way to a multitude of exciting career paths. With solid business knowledge, you'll unlock opportunities across various industries, leading to university, apprenticeships, employment, and further training.

We're excited to offer the new T Level in Business, a qualification crafted in collaboration with employers. Students enrolled on this T Level will complete a minimum of 315 hours in an industry placement, gaining valuable work experience and employability skills.

*LMI Data from the National Careers Service
June 2024*



FEATURED STUDENT:
SARA YASMIN

LEVEL 2

GATEWAY DIPLOMA IN BUSINESS ADMINISTRATION SUPPORT

Course Duration: **1 Year**

Assessment: **100% Portfolio based**

Entry Requirements: **4 GCSEs grade 2 and 3**

Units you may study include:

- Understanding business organisations
- Effective communication in the workplace
- The marketing environment
- Budgeting and managing money
- Using ICT in the workplace
- Creating business documents
- Using online systems to develop customer loyalty
- Interview skills
- Career planning

Progression routes include:

- Progression on to the Level 3 Foundation Diploma in Business
- Employment
- Apprenticeship



T-LEVELS

THE NEXT LEVEL QUALIFICATION

T LEVEL

BUSINESS AND ADMINISTRATION

Course Duration: **1-2 Years**

Assessment: **60% Exam 40% Employer Set Project (Controlled Assessment)**

Entry Requirements: **5 GCSEs grade 4 or above including English and maths. The two years of study equates to three A Levels.**

Course Introduction

We are now offering an exciting new pathway to study Business and Administration Level 3 T Level. As a student you will be able to study a 2-year programme which has been developed against industry standards to support you to gain knowledge and experience from being in a college environment and in industry. As a T Level student, you will be able to gain the technical knowledge and practical skills valued by the industry.

We are able to offer core skills such as business and commercial awareness, project management, and communication skills. In your second year you shall undertake an occupational specialism which could be either business improvement, business support, or leadership and management.

Progression routes include:

- University
- Employment
- Apprenticeship
- Progression to University Campus North Lincolnshire (UCNL)





STUDENT PROFILE



LEWIS BYE

Lewis, a former Outwood Academy Brumby student, completed a Level 3 BTEC Extended Diploma in Business Studies with us back in 2018.

Now, Lewis is a student at the University of Huddersfield where he is completing his PGCE through the University Campus North Lincolnshire (UCNL) while working as a FE Business tutor, inspiring future students who are looking to start a career in the world of business.

“NORTH LINDSEY COLLEGE PROVIDED ME WITH THE SKILLS, KNOWLEDGE, AND OPPORTUNITIES I NEEDED TO SUCCEED AND THE STAFF ALWAYS PUSHED ME TO ACHIEVE THE BEST I COULD. MY COURSE GAVE ME A ROUNDED LOOK AT THE BUSINESS WORLD AND PREPARED ME FOR THE REALITIES OF WORKING WITHIN INDUSTRY.”

CAREERS

- Accountant
- Digital Marketing Officer
- Finance Adviser
- Human Resources Officer/Manager
- Insurance Broker
- Marketing Manager
- Office Administrator
- Public Relations Officer
- Recruitment Consultant
- Secretary
- Retail Manager
- Bank Manager Civil Servant
- Events Organiser
- Hotel Manager
- Logistics Co-Ordinator
- Mortgage Adviser
- Payroll Office
- Receptionist
- Sales Manager
- Social Media Executive and much more...

Scan QR Code for an up to date list of our courses and to apply online!



38

CATERING AND HOSPITALITY

In recent years, we've transformed our catering and hospitality facilities with a state-of-the-art professional kitchen.

CAREER OPPORTUNITIES

Food Scientist

£24,000 to £45,000

Food Scientist

£24,000 to £45,000

Chef

£22,000 to £40,000

Catering Manager

£20,000 to £34,000

No experience in the industry? No problem! We'll guide you from the basics of cooking to mastering complex culinary skills.

Our students have enjoyed international trips and work experiences that enhance their skills. You could join them starting in September 2025. Previous placements have included fully supported trips to Troyes, France, to work in professional catering facilities. Many have also participated in the Erasmus programme, gaining work experience in kitchens across Europe.

LMI Data from the National Careers Service
June 2024

FEATURED STUDENT:
LUANA TRINTA



40 **CATERING AND HOSPITALITY**

LEVEL 1

CERTIFICATE IN CULINARY SKILLS

Course Duration: 1 Year

Assessment: 100% Coursework

*Entry Requirements: No formal
entry requirements*

Units you may study include:

- Introduction to the catering and hospitality industry
- Health and safety awareness for catering and hospitality
- Introduction to kitchen equipment
- Introduction to personal workplace skills
- Preparing and cooking food by boiling, poaching and steaming
- Preparing and cooking food by stewing and braising
- Preparing and cooking food by baking, roasting and grilling
- Preparing and cooking food by deep and shallow frying

Progression routes include:

- Progress on to Level 2 Diploma in Professional Cookery
- Employment
- Apprenticeship

LEVEL 2

DIPLOMA IN PROFESSIONAL COOKERY

Course Duration: 1 Year

Assessment: 50% Coursework 50% Exam

Entry Requirements: At least 4 GCSEs at grade 9-4

Units you may study include:

- Investigating the hospitality and catering industry
- Food safety in catering
- Healthier foods and special diets
- Costs and menu planning
- Applying workplace skills
- Preparing and cooking stocks, soups and sauces
- Preparation and cooking of fruit and vegetables
- Preparation and cooking of meat, offal, poultry, fish and shellfish
- Preparation and cooking of rice pasta, grains and egg dishes
- Producing hot and cold desserts, puddings, biscuit, cake and sponge products
- Preparation and cooking of fermented dough

Progression routes include:

- Progress on to Level 3 Advanced Diploma in Professional Cookery
- Employment
- Apprenticeship

LEVEL 3

ADVANCED DIPLOMA IN PROFESSIONAL COOKERY

Course Duration: 1-2 Years

*Assessment: 50% Theory 50% Practical
Assessments*

Entry Requirements: Level 2 in Professional Cookery

The two years of study equates to three A Levels

Units you may study include:

- Supervisory food safety
- Supervisory skills in hospitality
- Exploring gastronomy
- Advanced skills in vegetables and vegetarian dishes
- Advanced skills and techniques in producing meat dishes
- Advanced skills and techniques in producing poultry and game dishes
- Advanced skills and techniques in producing dough and batter products
- Petit fours products
- Produce paste products
- Produce hot, cold, and frozen desserts
- Produce biscuits, cakes and sponges

Progression routes include:

- University
- Employment
- Apprenticeship





STUDENT PROFILE



BEATRICE RUDD

Former The Axholme Academy student, Beatrice Rudd completed her Level 2 Diploma in Professional Cookery with us and, after impressing the employer she completed her work placement with, is now working in the catering and hospitality field at Feast 78 Ltd.

“THROUGH MY WORK PLACEMENT, I HAVE GAINED A JOB AS WELL AS VITAL SKILLS AND EXPERIENCE OF WORKING WITHIN CATERING AND HOSPITALITY. WE RECENTLY DID AN EVENT AT SIEMENS WHERE WE WERE CATERING FOR THE PRIME MINISTER AND MEMBERS OF PARLIAMENT!”

CAREERS

- Catering Manager
- Chef de Partie
- Food Manufacturing Development
- Food Service
- Food Retail Section Supervisor
- Greengrocer
- Kitchen Porter
- Restaurant Manager
- Wedding and Events Planner
- Baker/Cake Decorator
- College Lecturer
- Chef
- Public House Manager
- Head Chef Hotel Manager
- Private Chef
- Food Stylist and much more...

Scan QR Code for an up to date list of our courses and to apply online!



42 CONSTRUCTION

The construction industry is facing a critical skills shortage, leaving employers struggling to fill vacancies. With an abundance of opportunities available, there's never been a better time to start a trade.

CAREER OPPORTUNITIES

Quantity Surveyor

£25,000 to £80,000

Civil Engineer

£28,000 to £60,000

Plumber

£21,000 to £40,000

Carpenter / Joiner

£17,000 to £38,000

Nationwide, over 255,000 construction workers will be needed in the coming years to bridge this gap. At North Lindsey College, we provide comprehensive training in brickwork, plastering, plumbing, carpentry, joinery, and construction in the built environment. For those aspiring to advance into site management and surveying, we offer a specialised T Level in Surveying and Design for Construction and the Built Environment.

Our department boasts spacious, modern workshops tailored to each trade, designed to simulate real-life working conditions. Using industry-standard materials enriches the learning journey, ensuring hands-on experience that aligns with industry expectations.

We pride ourselves on strong partnerships with local construction employers, offering valuable work experience placements. Additionally, every student has the opportunity to apply for an apprenticeship in their chosen trade, setting them on a solid path towards a successful career in construction.

LMI Data from the National Careers Service
June 2024

FEATURED STUDENT:
CHARLOTTE TAYLOR



44 CONSTRUCTION

ENTRY 3

CERTIFICATE MULTI-SKILLS CONSTRUCTION TRADES 3

Course Duration: **1 Year**

Assessment: **Paper-based exams**

Entry Requirements: **No formal entry requirements**

Units you may study include:

- Health and safety in construction
- Introduction to the construction industry
- A choice of practical tasks including bricklaying, carpentry and joinery, plastering and plumbing

Progression routes include:

- Level 1 in one of the trades

LEVEL 1

CERTIFICATE IN BRICKWORK

Course Duration: **1 Year**

Assessment: **50% Theory 50% Practical**

Entry Requirements: **GCSE Maths and English grades 2-3**

Units you may study include:

- Introduction to health and safety in construction
- Introduction to the construction industry
- Constructing cavity walls in brickwork and block work
- Constructing one brick walling
- Constructing block walling
- Constructing half brick return corners

Progression routes include:

- Progression on to the Level 1 Diploma in Brickwork
- Apprenticeship
- Employment

LEVEL 1

DIPLOMA IN BRICKWORK

Course Duration: **1 Year**

Assessment: **50% Theory 50% Practical**

Entry Requirements: **GCSE Maths and English grades 3-4**

Units you may study include:

- Principles of building construction, information and communication
- Contribute to setting out and building of masonry structures up to damp proof course
- Carrying out block laying activities
- Carrying out bricklaying activities
- Carrying out cavity walling activities
- Health, safety and welfare in construction

Progression routes include:

- Progression on to the Level 2 Diploma in Brickwork
- Apprenticeship
- Employment

LEVEL 2

DIPLOMA IN BRICKWORK

Course Duration: **1 Year**

Entry Requirements: **Progression from Level 1 only, no direct entry**

Units you may study include:

- Health, safety and welfare in construction
- Principles of building construction, information and communication
- Building solid walling, isolated and attached piers
- Interpreting working drawings to set out masonry structures
- Construct cavity walling forming masonry structures

Progression routes include:

- Progression on to the Level 3 Diploma in Brickwork
- Apprenticeship
- Employment



STUDENT PROFILE

KAYDEN JOHNSON

Kayden joined the College in 2022 to study bricklaying. Upon completing the course Kayden secured employment as a brickwork and masonry specialist at NBE Builders & Construction.



“I FINISHED MY BRICK LAYING COURSE IN 2023 AND IT TAUGHT ME THE SKILLS AND KNOWLEDGE I USE DAY TO DAY IN MY JOB. IT HAS CREATED MANY OPPORTUNITIES FOR ME AND I’M VERY GRATEFUL FOR MY TUTOR, STEVE’S SUPPORT THROUGHOUT MY TIME AT NORTH LINDSEY COLLEGE. THIS COURSE HAS SET ME UP FOR SUCCESS!”

CAREERS

- Architect
- Building Control Officer
- Building Services Engineer
- Building Site Inspector
- Construction Manager
- Construction Contracts Manager
- Heating And Ventilation Engineer
- Kitchen and Bathroom Fitter
- Land Surveyor
- Quantity Surveyor
- Tiler
- Town Planner
- Bricklayer Plasterer
- Civil Engineer
- Plumber
- Carpenter/Joiner
- Facilities Caretaker
- Shopfitter
- Painter & Decorator
- Structural Engineer and much more...

Scan QR Code for an up to date list of our courses and to apply online!



46 CONSTRUCTION

LEVEL 1

CERTIFICATE IN PLASTERING

Course Duration: **1 Year**

Assessment: **50% Theory 50% Practical**

Entry Requirements: **GCSE Maths and English grades 2-3**

Units you may study include:

- Introduction to health and safety in construction
- Introduction to the construction Industry
- Preparing background surfaces and applying finishing coats
- Mixing materials and applying floating
- Preparing background surfaces and applying render coats

Progression routes include:

- Progression on to the Level 1 Diploma in Plastering
- Apprenticeship
- Employment

LEVEL 1

DIPLOMA IN PLASTERING

Assessment: **50% Theory 50% Practical**

Entry Requirements: **GCSE Maths and English grades 3-4**

Units you may study include:

- Principles of building construction information and communication
- Prepare background surfaces and mix plaster materials
- Applying scratch coats to internal backgrounds
- Fixing sheet materials
- Applying floating coats to walls
- Applying setting coats to walls
- Health Safety and Welfare in Construction

Progression routes include:

- Progression on to the Level 2 Diploma in Plastering
- Apprenticeship
- Employment

LEVEL 2

DIPLOMA IN PLASTERING

Course Duration: **1 Year**

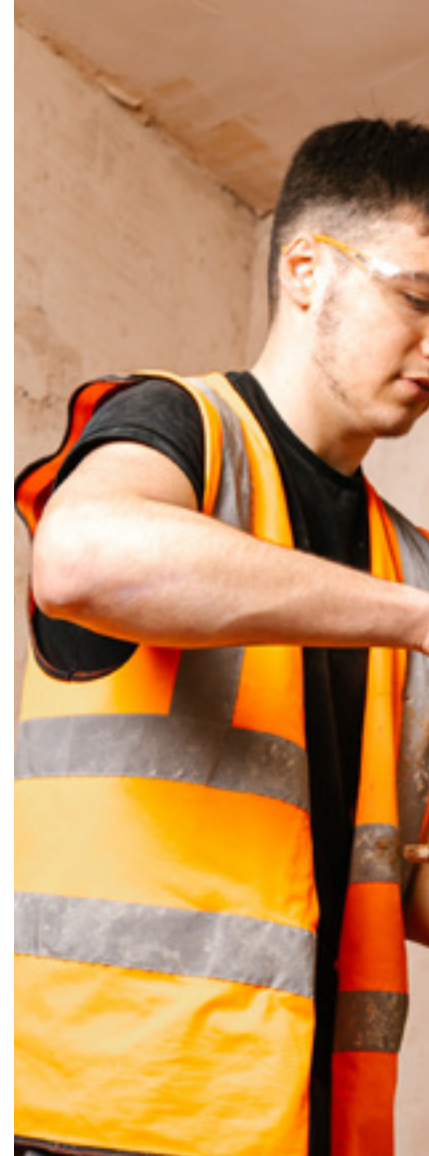
Entry Requirements: **Progression from Level 1 only, no direct entry**

Units you may study include:

- Health, safety & welfare in construction
- Principles of building construction information & communication
- Applying plaster materials to interiors
- Fix dry lining and plasterboards to interiors
- Laying sand cement screeds
- Applying plaster materials to external backgrounds

Progression routes include:

- Progression on to the Level 3 Diploma in Plastering
- Apprenticeship
- Employment





LEVEL 1

CERTIFICATE IN JOINERY

Course Duration: 1 Year

Assessment: 50% Theory 50% Practical

Entry Requirements: GCSE Maths and English grades 2-3

Units you may study include:

- Introduction to health and safety in construction
- Constructing halving joints
- Constructing housing joints
- Constructing through mortice and tenon joints
- Constructing angled halving joints
- Constructing bridle joints
- Constructing haunched mortice and tenon joints
- Constructing stub mortice and tenon joints
- Fixing architraves and skirtings
- Constructing and fixing hatch linings
- Fitting locks and latches

Progression routes include:

- Progression on to the Level 1 Diploma in Joinery
- Apprenticeship
- Employment

LEVEL 1

DIPLOMA IN JOINERY

Course Duration: 1 Year

Assessment: 50% Theory 50% Practical

Entry Requirements: GCSE Maths and English grades 3-4

Units you may study include:

- Principles of building construction, information and communication
- Maintain and use carpentry and joinery hand tools
- Prepare and use carpentry and joinery portable power tools
- Produce woodworking joints
- Health, safety and welfare in construction

Progression routes include:

- Progression on to the Level 2 Diploma in Joinery
- Apprenticeship
- Employment

LEVEL 2

DIPLOMA IN JOINERY

Course Duration: 1 Year

Entry Requirements: Progression from Level 1 only, no direct entry

Units you may study include:

- Health, safety and welfare in construction
- Principles of building construction, information and communication
- Carry out first fix flooring and roofing
- Carry out first fix frames, partitions and stairs
- Carry out second fixing operations
- Carry out carpentry maintenance
- Set up and operate a circular saw

Progression routes include:

- Progression on to the Level 3 Advanced Technical Diploma in Site Carpentry
- Apprenticeship
- Employment



LEVEL 1

CERTIFICATE IN PLUMBING

Course Duration: **1 Year**

Assessment: **60% Theory 40% Practical**

Entry Requirements: **GCSE Maths and English grades 2-3**

Units you may study include:

- Health and safety in construction
- Working with nonmanipulative fittings
- Connecting flex to common apparatus

Progression routes include:

- Progression on to the Level 1 BPEC Diploma in Plumbing
- Apprenticeship
- Employment

LEVEL 1

BPEC DIPLOMA IN PLUMBING

Course Duration: **1 Year**

Assessment: **50% Theory 50% Practical**

Units you may study include:

- Structure of the construction industry
- Fundamental safe working practices
- Environmental and sustainability measures in domestic dwellings
- Site preparation for working in the construction industry
- Above ground drainage
- Copper pipework
- Plastic pressure pipework
- Low carbon steel pipework
- Installation, repair and maintenance of plumbing systems
- Plumbing science

Progression routes include:

- Progression on to the Level 2 Diploma in BPEC Plumbing
- Apprenticeship
- Employment

LEVEL 2

BPEC DIPLOMA IN PLUMBING

Course Duration: **2 Years**

Entry Requirements: **Progression from Level 1 only, no direct entry**

Units you may study include:

- Health and safety in building services engineering
- Electrical principles and processes for building services engineering
- Scientific principles for domestic, industrial and commercial plumbing
- Common plumbing processes
- Cold water systems
- Domestic hot water systems
- Sanitation
- Central heating systems
- Drainage systems
- Understand how to communicate with others within building services engineering

Progression routes include:

- Apprenticeship
- Employment

T-LEVELS

THE NEXT LEVEL QUALIFICATION

T LEVEL

SURVEYING & DESIGN FOR CONSTRUCTION AND THE BUILT ENVIRONMENT

Course Duration: **2 Years**

Assessment: **Three assessments which include - science and building technology, construction industry and sustainability and an employer set project**

Entry Requirements: **GCSE Maths and English grade 5 as a minimum**

Units you may study include:

- Health and safety
- Science
- Measurement
- Building technology
- Information and data
- Digital technology
- Construction mathematical techniques
- Design
- Construction and the built environment industry
- Sustainability
- Relationship management
- Commercial business
- Project management
- Law

Progression routes include:

- University
- Apprenticeship
- Employment





50 CREATIVE DIGITAL TECHNOLOGIES

The creative digital technology sector is booming locally, nationally, and globally, making it a key growth industry in our region.

CAREER OPPORTUNITIES

Computer Games Developer

£25,000 to £70,000

Software Developer

£26,000 to £70,000

Social Media Manager

£25,000 to £60,000

Web Designer

£18,000 to £40,000

LMI Data from the National Careers Service
June 2024

Our region thrives with a vibrant digital economy, spotlighting sectors like gaming, virtual reality, IT, and digital marketing as prime areas for expansion. This emphasises the importance of honing strong creative and digital technology skills.

Our programmes are taught by industry professionals with sector experience, ensuring our students receive training that's current and directly relevant to today's career landscape.

Students from our programmes have secured positions in diverse industries within the sector, from renowned companies like Rockstar

Games and Cartoon Network to launching their own ventures such as Double Barrel Animation. Many of our students progress on to university, pursuing specialised studies at prestigious institutions such as Ravensbourne University in London. Apprenticeships offer another pathway, to upskill and gain hands-on experience with an employer.

If you're seeking a fast-paced, dynamic working environment, digital careers offer exactly that! Join this thriving industry at the forefront of future careers and make your mark in a field that's rapidly evolving and expanding.

FEATURED STUDENT:
CURTIS SCHULTZ



52 CREATIVE DIGITAL TECHNOLOGIES

LEVEL 1

EXTENDED CERTIFICATE IN DIGITAL SKILLS

Course Duration: **1 Year**

Assessment: **100% Workbook based**

Entry Requirements: **At least 4 GCSE grades 3-1**

Units you may study include:

- Website design
- Photo editing
- Digital project
- Animation
- Employability skills

Progression routes include:

- Apprenticeship
- Employment
- Progress on to a Level 2 course

LEVEL 2

EXTENDED CERTIFICATE IN CREATIVE MEDIA & GAMES DESIGN

Course Duration: **1 Year**

Assessment: **100% Coursework**

Entry Requirements: **4 GCSEs at grade 3 or above including maths or English**

Units you may study include:

- Digital graphics
- Web design
- Games design
- Digital project
- Interactive media
- Content creation
- Careers progression
- Employability skills
- Animation
- Video production

Progression routes include:

- Apprenticeship
- Employment
- Progress on to Level 3 Diploma in Creative Media Production & Technology

LEVEL 2

EXTENDED CERTIFICATE IN COMPUTING & GAMES DESIGN

Course Duration: **1 Year**

Assessment: **100% Coursework**

Entry Requirements: **4 GCSEs at grade 3 or above including English or maths**

Units you may study include:

- Cyber security
- Networking
- Programming
- Games design and development
- Careers progression
- Database software
- Digital project
- Employability skills

Progression routes include:

- Apprenticeship
- Employment
- Progress on to Level 3 Certificate in Software Development

LEVEL 3

CERTIFICATE IN SOFTWARE DEVELOPMENT

Course Duration: **1 Year**

Assessment: **100% Coursework**

Entry Requirements: **5 GCSEs at grade 9-4 including maths and ideally English or a qualification in IT or computing**

Units you may study include:

- Project management
- Javascript
- Object oriented programming
- Programming implementation
- Software testing

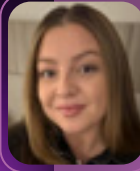
Progression routes include:

- University
- Employment
- Apprenticeship
- Progression to University Campus North Lincolnshire (UCNL)





STUDENT PROFILE



COURTNEY MCINTYRE

Courtney, previously Melior Community Academy student, studied creative media back in 2012 and upon finishing the course progressed to Sheffield Hallam University to complete a degree in Public Relations. Since leaving university, Courtney has worked in the creative world of marketing and now makes up a part of the college's marketing team.

“THE COURSE WAS REALLY VARIED AND ENGAGING, AND THE TUTORS EXTREMELY HELPFUL. I DEFINITELY GAINED CREATIVE AND TECHNICAL SKILLS THAT I STILL USE AND VALUE TO THIS DAY. I HAVE FOND MEMORIES OF MY TIME AT NORTH LINDSEY COLLEGE AS A STUDENT AND IT FEELS VERY FULL CIRCLE TO COME BACK AND WORK FOR THE COLLEGE THAT HELPED ME REACH MY CAREER GOALS. YOU WON'T REGRET CHOOSING TO STUDY HERE!”

CAREERS

- Computer Games Tester
- Cyber Intelligence Officer
- Drone Pilot
- IT Project Manager
- IT Support Technician
- Solutions Architect
- Web Designer
- Photographer
- Teacher (Primary or Secondary)
- Video Editor
- Digital Marketer
- E-Commerce
- Security Software Developer
- IT Service Engineer
- Content Creator
- Network Engineer
- Vlogger
- Graphic Designer
- TV/Film Camera Operator
- and much more...

Scan QR Code for an up to date list of our courses and to **apply online!**



54 CREATIVE DIGITAL TECHNOLOGIES

LEVEL 3

EXTENDED DIPLOMA IN CREATIVE MEDIA PRODUCTION AND TECHNOLOGY

Course Duration: **2 Years**

Assessment: **60% Coursework
40% Extended Major Project**

Entry Requirements: **5 GCSEs
grade 9-4 including English,
maths and ideally a Level 2
qualification in Art, Media or IT**

Units you may study include:

- Graphic design
- Photography and digital imaging techniques
- Film, video and audio editing
- Digital illustration
- Video production
- Content creation
- Podcasting
- Motion graphics
- Visual effects
- Final major project

Progression routes include:

- University
- Employment
- Apprenticeship
- Progression to University Campus North Lincolnshire (UCNL)

T-LEVELS

THE NEXT LEVEL QUALIFICATION

T LEVEL

DIGITAL PRODUCTION, DESIGN AND DEVELOPMENT

Course Duration: **2 Years**

Assessment: **Year 1 - 34% assessed through employer set project & 66% through core exams**

Assessment: **Year 2 - 100% assessed through externally assessed project**

Entry Requirements: **At least 5 GCSEs at grade 4 or above with maths and English at grade 5. Ideally IT or Computer Science at grade 4 or above.**

The core component will be assessed through a project set by employers in the industry and two externally set tests (50% of the qualification). The occupational specialism is assessed through an externally assessed project. Students will respond to a scenario to design and develop a software-based solution (50% of the qualification).

Course Introduction

This T Level is for you if you want to start a career in software and digital design, for example a programmer, web developer, systems analyst, software developer or digital marketer.

T Levels combine classroom theory, practical learning and a minimum 315 hours industry placement. During the programme, you will learn the core knowledge that underpins most jobs in the digital industry, you will also develop occupationally specific skills that will allow you to enter skilled employment within digital production, design and development. The content is split into a core component that is common to all Digital T Levels & occupational specialism content that is specific to working within software development.

The core component will introduce you to digital related topics including IT security, programming, problem solving, project planning, networking, data, impact of IT and digital environments.

The occupational specialism content will allow you to develop skills in analysing problems, designing solutions, software development, testing solutions, maintaining software and evaluating.

Progression routes include:

- University
- Employment
- Apprenticeship
- Progression to University Campus North Lincolnshire (UCNL)





56 EDUCATION & EARLY YEARS

In 2022, there were an estimated 59,000 registered childcare providers for children aged 0-4 years old, providing over 1.5 million Ofsted registered childcare places.

CAREER OPPORTUNITIES

Early Years Teacher

£30,000 to £47,000

Education Welfare Officer

£22,000 to £30,000

Teaching Assistant

£18,000 to £23,000

Nursery Worker

£14,500 to £23,000

After completing our courses, students have a wide range of career paths awaiting them, from nurseries to schools and beyond.

Our programmes are designed to give students a competitive edge, offering real-world work experience guided by experienced industry practitioners.

We have our own onsite nursery catering to ages five months to five years. Many students choose to gain valuable work experience at our nursery, honing their employability skills and nurturing their expertise working directly with young children.

FEATURED STUDENT:
ADAM MARLOW



LEVEL 1

CERTIFICATE CARING FOR CHILDREN

Course Duration: **1 Year**

Assessment: **100% coursework**

Entry Requirements: **No formal entry requirements although learners should have an interest in pursuing a career in the early years and education sector**

Units you may study include:

- Growth and development of young children
- Finding out about forest schools
- Understanding learning and development of young children
- Musical activities for young children

Progression routes include:

- Progress on to Level 2 Certificate Introducing Caring for Children and Young People
- Employment
- Apprenticeship

LEVEL 2

CERTIFICATE INTRODUCING CARING FOR CHILDREN AND YOUNG PEOPLE

Course Duration: **1 Year**

Assessment: **100% coursework**

Entry Requirements: **Grade 2-3 in GCSE English and maths**

Units you may study include:

- Safeguarding the welfare of children and young people
- The value of play to children and young people
- Accident prevention and fire safety
- Caring for young children in a babysitting environment
- Craft activities with young children
- Using food and nutrition information to plan a healthy diet

Progression routes include:

- Progress on to T Level Transition Programme – Education and Childcare
- Employment
- Apprenticeship

T LEVEL

FOUNDATION YEAR EDUCATION & CHILDCARE

Course Duration: **1 Year**

Assessment: **100% coursework including development of presentation skills**

Placement: **250 hours work placement in a relevant setting**

Entry Requirements: **Grade 2-3 or above in GCSE English or maths**

Units you may study include:

- Roles and responsibilities of the Early Years Practitioner
- Health and safety of babies and young people
- Equality, diversity and inclusive practice
- Promote play in an early years setting
- Support babies and young children to be physically active
- Support the needs of babies and young children with special educational needs

Progression routes include:

- Progress on to the T Level – Education and Childcare
- Employment
- Apprenticeship

T-LEVELS

THE NEXT LEVEL QUALIFICATION

T LEVEL

EDUCATION AND CHILDCARE (EARLY YEARS EDUCATOR OR ASSISTING TEACHING PATHWAYS)

Course Duration: **2 Years**

Assessment: **Two written examinations, employer set project, work placement assessment**

Placement: **750 hours work placement in a relevant setting (across two years)**

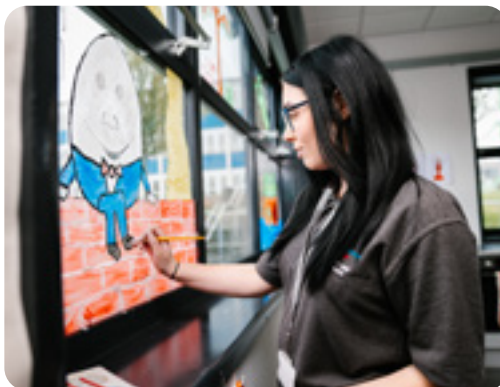
Entry requirements: **Grade 4 or above in GCSE English and maths**

Units you may study include:

- Safeguarding, health and safety and wellbeing
- Parents, families and carers
- Reflective practice
- Equality diversity
- Child development
- Special educational needs and disability (SEND)
- English as an additional language
- Supporting education
- Working with others

Progression routes include:

- University
- Employment
- Higher level apprenticeship
- Progression to University Campus North Lincolnshire (UCNL)





STUDENT PROFILE



ISOBEL MORRIS

Former The Vale Academy student, Isobel completed her T Level in Education and Childcare with us and immediately progressed into a full-time role.

Isobel now works as a one-to-one teaching assistant at a local primary school - the same place where she completed her work experience placement hours.

“THE COURSE IS GREAT BECAUSE EVEN IF YOU’RE NOT SURE ON WHAT CAREER YOU WANT, BUT YOU KNOW YOU WANT TO WORK WITH CHILDREN IN SOME WAY, THERE ARE LOTS OF OPPORTUNITIES AND DIFFERENT DOORS THAT CAN BE OPENED.”

CAREERS

- Primary School Teacher
- Residential Support Worker
- Nursery Worker
- Children’s Nurse
- Childminder
- Nurse Play Worker
- Children’s Care Worker
- Specialist Healthcare Assistant
- Children’s Resort Representative
- Nanny
- Child Protection Officer
- Family Support Worker
- Nursery Manager
- Teaching Assistant and much more...

Scan QR Code for an up to date list of our courses and to **apply online!**



60 **ENGINEERING**

Curious about engineering but unsure of your path? Our Engineering department is your gateway to exploring and defining your career direction.

CAREER OPPORTUNITIES

Mechanical Engineer

£26,000 to £52,000

Wind Turbine Technician

£25,000 to £47,000

Welder

£25,000 to £45,000

Electrician

£22,000 to £44,000

We're dedicated to helping you uncover the vast array of opportunities available in engineering, guiding you towards discovering your passion within the field.

Engineers are in high demand locally and nationally, and our comprehensive programmes and apprenticeships pave the way to a successful career.

Step into our state-of-the-art Engineering Technology Centre, equipped with everything from CNC machinery and CAD workshops to robotics and wind turbines. It's not just a place to study—it's where you'll cultivate and refine your skills, preparing you for a dynamic and rewarding career in engineering.

LMI Data from the National Careers Service
June 2024

FEATURED STUDENT:
MATIAS DA COSTA SEQUIRA SANCHES



LEVEL 1

DIPLOMA IN ELECTRICAL INSTALLATION

Course Duration: **1 Year**

Entry Requirements: **GCSE grade 3 minimum in English and maths**

Topics you will study include:

- Health and safety
- Electrical principles
- Circuit design building electrical circuits
- Electrical principles

Progression routes include:

- Level 2
- Employment
- Apprenticeship

LEVEL 2

DIPLOMA IN ELECTRICAL INSTALLATION

Course Duration: **1 Year**

Entry Requirements: **Grades 4 in English and maths**

Topics you will study include:

- Domesticated electrical circuits
- Maths and English
- Practical based electrical projects
- Tray work and trunking

Progression routes include:

- Level 3 or T Level
- Employment
- Apprenticeship

LEVEL 2

FOUNDATION T LEVEL IN ELECTRICAL ENGINEERING

Course Duration: **1 Year**

Entry Requirements: **Grades 5 in English and maths**

Topics you will study include:

- Electrical installation
- Panelling and wiring
- Basic introduction into electrical systems
- Digital skills
- Instructional relevant technical skills
- Employer led project
- Higher level maths
- Higher level English
- 180 -200 hours practical in electrical engineering

Progression routes include:

- T Level
- Employment
- Apprenticeship

LEVEL 3

DIPLOMA IN ENGINEERING TECHNOLOGIES – MECHANICAL OR ELECTRICAL

Course Duration: **1 Year**

Assessment: **Exam and Practical**

Entry Requirements: **Grades 4 or 5 in English and maths**

Mechanical Units:

- Understanding of engineering environmental health and safety
- Engineering environment health and safety
- Mechanical maintenance
- CAD
- Pneumatics principles
- Hydraulic principles
- Analog electronics
- Digital systems
- 30 hours work experience

Electrical Units:

- Health and safety
- Engineering efficiency
- Engineering maths
- CAD
- Electrical testing
- Electrical maintenance
- Installation of electrical equipment

Optional Unit:

- Analogue electronics

Progression routes include:

- University
- Employment
- Apprenticeship
- Progression to University Campus North Lincolnshire (UCNL)





STUDENT PROFILE

JOE SMITH



Former student, Joe is now working as an apprentice at Volker Rail, completing a MOET (Maintenance and Operation Engineering Technician) apprenticeship. Joe joined North Lindsey College and completed a Level 2 Diploma in Mechanical Engineering and Level 3 Extended Diploma in Mechanical Engineering Technologies.

“NORTH LINDSEY GAVE ME THE OPPORTUNITY TO GO AND COMPLETE TWO WEEKS OF WORK EXPERIENCE IN AMERICA. THE WIND TURBINE SIMULATORS ARE GREAT IN ENGINEERING, ALONG WITH THE HYDRAULIC AND PNEUMATIC RIGS BEING INTERESTING TO WORK ON. MY TUTOR GAVE ME LOADS OF GUIDANCE AND SUPPORT THROUGHOUT THE THREE YEARS I WAS THERE AND HELPED ME MOVE ONTO MY APPRENTICESHIP AT VOLKER RAIL.”

CAREERS

- Aerospace Engineer/ Technician
- CAD Technician
- Machinist
- Craft Machinist/Lathe Technician
- Electrical Installer – EV Charging
- Electricity Distribution Engineer
- Mechanical Engineer
- Marine Engineering Technician
- Merchant Navy Engineer
- Offshore Drilling Worker
- Rail Engineering Technician
- Smart Meter Installer
- Electrician
- Design & Development Engineer
- Engineering Maintenance Fitter
- Fabricator & Welder
- Plant Fitter
- Electrical Engineer
- Pipe Fitter/Welder
- Telecoms Engineer
- Wind Turbine Technician and much more...

Scan QR Code for an up to date list of our courses and to **apply online!**



LEVEL 1

AWARD IN FABRICATION AND WELDING

Course Duration: **1 Year**

Entry Requirements: **GCSE Grade 3 in English and maths**

Topics you will study include:

- MIG
- TIG
- MMA

Progression routes include:

- Level 2
- Employment
- Apprenticeship

LEVEL 2

CERTIFICATE IN FABRICATION AND WELDING

Course Duration: **1 Year**

Entry Requirements: **GCSE Grade 3 in English and maths**

Topics you will study include:

- Welding skills - MMA, TIG and MIG
- Health and safety
- Fabrication and welding principles

Progression routes include:

- Level 3 or T Level
- Employment
- Apprenticeship

LEVEL 2

FOUNDATION T LEVEL IN FABRICATION AND WELDING

Course Duration: **1 Year**

Entry Requirements: **GCSE Grade 5 in English and maths**

Topics you will study include:

- Welding techniques – MIG, TIG, MMA
- Digital skills
- Instructional relevant technical skills
- Employer led project
- Higher level maths
- Higher level English
- 180-200 hours practical in fabrication and welding

Progression routes include:

- T Level
- Employment
- Apprenticeship

LEVEL 3

DIPLOMA IN ENGINEERING TECHNOLOGIES – FABRICATION AND WELDING

Course Duration: **1 Year**

Assessment: **Exam and Practical**

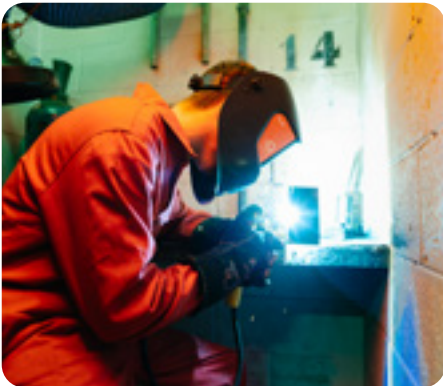
Entry Requirements: **GCSE Grades 4 or 5 in English and maths**

Units you may study include:

- Engineering environment health and safety
- Fabrication and welding principles
- MMA welding techniques
- MIG welding techniques
- CAD
- Plating and fabrication
- TIG Welding
- 30 hours' work experience

Progression routes include:

- University
- Employment
- Apprenticeship
- Progression to University Campus North Lincolnshire (UCNL)





66 ENGINEERING

LEVEL 1

CERTIFICATE IN MECHANICAL ENGINEERING

Course Duration: **1 Year**

Entry Requirements: **GCSE grades in English and maths**

Topics you will study include:

- Health and safety
- Hand fitting tools and techniques
- CAD design
- Lathe work

Progression routes include:

- Level 2
- Employment
- Apprenticeship

LEVEL 2

DIPLOMA IN ENGINEERING AND MANUFACTURING

Course Duration: **1 Year**

Entry Requirements: **GCSE Grade 4 in English and maths**

Topics you will study include:

- Hand fitting skills
- Lathe work
- Project work
- Health and safety
- Online exam
- Practical work

Progression routes include:

- Level 3 or T Level
- Employment
- Apprenticeship

LEVEL 2

FOUNDATION T LEVEL IN MECHANICAL ENGINEERING

Course Duration: **1 Year**

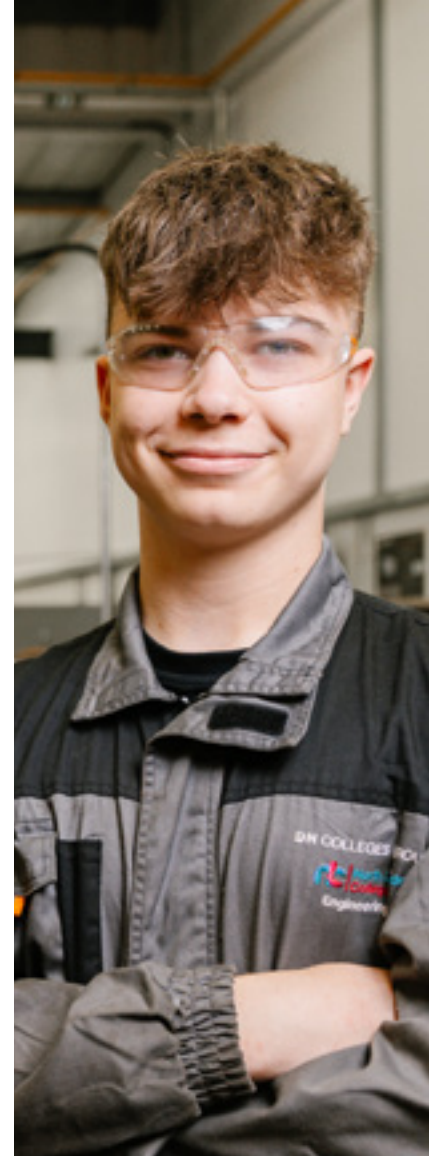
Entry Requirements: **GCSE Grade 5 in English and maths**

Topics you will study include:

- Practical hand skills
- Machine competencies
- Digital skills
- Instructional relevant technical skills
- Employer led project
- Higher level maths
- Higher level English
- 180 hrs -200 hrs practical in Mechanical engineering

Progression routes include:

- T Level
- Employment
- Apprenticeship



T-LEVELS

THE NEXT LEVEL QUALIFICATION

T LEVEL

FABRICATION AND WELDING

Course Duration: **2 years**

Entry Requirements: **Grade 6 in GCSE maths, English, and science**

Equivalent to three A Levels

Topics you will study include:

- Mechanical principles
- Electrical principles
- Essential maths for engineering
- Engineering manufacturing control systems
- Health and safety principles
- Business, commercial and financial awareness
- Professional responsibilities
- Stock and asset management
- Continuous improvements
- Project and programme management
- Specialism in welding techniques – MIG, TIG, MMA and burning
- 315 hours work placement

Progression routes include:

- University
- Employment
- Apprenticeship
- Progression to University Campus North Lincolnshire (UCNL)

T-LEVELS

THE NEXT LEVEL QUALIFICATION

T LEVEL

MECHANICAL ENGINEERING

Course Duration: **2 years**

Entry Requirements: **Grade 6 in GCSE maths, English, and science**

Equivalent to three A Levels

The first year of the T Level is made up of 17 units. In the second year students specialise in mechanical engineering.

The course has a substantial work placement where students spend a minimum of 315 hours work experience with a local employer.

Topics you will study include:

- Mechanical principles
- Electrical principles
- Essential maths for engineering
- Engineering manufacturing control systems
- Health and safety principles
- Business, commercial and financial awareness
- Professional responsibilities
- Stock and asset management
- Continuous improvements
- Project and programme management
- Specialism in mechanical engineering
- 315 hours work placement

Progression routes include:

- University
- Employment
- Apprenticeship
- Progression to University Campus North Lincolnshire (UCNL)

T-LEVELS

THE NEXT LEVEL QUALIFICATION

T LEVEL

BUILDING SERVICES AND CONSTRUCTION

Course Duration: **2 years**

Entry Requirements: **Grade 6 in GCSE maths, English, and science**

Equivalent to three A Levels

The first year of the T Level is made up of 14 units. In the second year students specialise in electrical installation.

The course has a substantial work placement where students spend a minimum of 315 hours work experience with a local employer.

Topics you will study include:

- Architecture
- Building control systems
- Health and safety in construction
- Construction in built environment and industry
- Building technology principles
- Maintenance principles
- Tools and equipment
- Specialism in electrical installation/electro-Technical
- 315 hours work placement

Progression routes include:

- University
- Employment
- Apprenticeship
- Progression to University Campus North Lincolnshire (UCNL)

The background of the entire page is a blurred photograph of a classroom. It shows several whiteboards on a wall and rows of wooden desks with metal frames. The lighting is soft, and the colors are muted, giving it a professional and educational feel.

68

ENGLISH FOR SPEAKERS OF OTHER LANGUAGES (ESOL)

Our English for Speakers of Other Languages (ESOL) programme is aimed at students whose primary language is not English.

CAREER OPPORTUNITIES

Many students progress into vocational subject areas on completion of the ESOL programme, depending on your career plans. You can talk to our careers advisors about the individual opportunities available to you.

This course is aimed at those who need to improve their English before progressing onto their chosen vocational area within the College. You will develop your reading, writing, speaking and listening skills with help from our experienced tutors. The course will help you gain valuable skills to aid future training, employment and everyday life.

FEATURED STUDENT:
HADIA KOHZAD

70 **ENGLISH FOR SPEAKERS OF OTHER LANGUAGES (ESOL)**

ENTRY LEVEL 1, 2, 3

ESOL STUDY PROGRAMME

Course Duration: 1 Year

Course Introduction

This course is aimed at 16-18 year olds who have English as a second language and need to improve their English language skills before progressing onto their chosen vocational area within the College or the world of work.

The course covers speaking and listening, reading and writing.

As part of the course you will also work towards a maths qualification if you haven't already got a grade 4 or higher for your GCSE. You will be taught by experienced English teachers and undertake 30 hours work placement as part of your qualification. The qualification is assessed in three levels from Entry 1 to Entry 3.

There are no entry requirements for our ESOL Study Programmes. You will be interviewed and assessed once we have received your application, and the specialist tutors will give you initial advice and guidance about the most appropriate course and level for you.

ENGLISH FOR SPEAKERS OF OTHER LANGUAGES (ESOL): ADULT PART TIME COURSES

There are no entry requirements for our ESOL Adult Programmes. You will be interviewed and assessed once we have received your application, and the specialist tutors will give you initial advice and guidance about the most appropriate course and level for you.

ENTRY 1 TO LEVEL 2

ESOL SPEAKING AND LISTENING

Course Introduction

This course is only available for those aged 19+, for those students aged 16-18 you would be required to undertake the ESOL Study Programme.

This course is taught to a variety of levels from Entry 1 to Level 2 and is delivered part-time for two sessions a week with start dates in September. The course runs for 12-14 weeks and then you will undertake an exam and progression courses will be discussed.

Assessment method

This qualification is assessed using a variety of methods including examinations and formative assessment.

You will learn how to listen and respond to extended and detailed spoken language, how to speak and communicate detailed information, how to share ideas and opinions clearly and appropriately, how to engage in discussion in a variety of situations making clear and effective contributions.





STUDENT PROFILE



CAMILA GRIPA

When Camila arrived in the UK from Brazil in 2017, her goal was to rebuild her life and advance professionally, and improving her English was the first step.

“NORTH LINDSEY COLLEGE’S ESOL COURSE WAS EXACTLY WHAT I NEEDED. I ENROLLED ON THE 6-HOUR-PER-WEEK COURSE AND, WITH DETERMINATION, PURSUED MY DREAM.

TODAY, I AM AN EMPLOYEE AT THE COLLEGE WHERE MY JOURNEY BEGAN AND CONTINUE TO SEEK GROWTH OPPORTUNITIES. EDUCATION TRANSFORMS LIVES AND I HIGHLY RECOMMEND THIS ESOL COURSE.”

CAREERS

- Many students progress into vocational subject areas on completion of the ESOL programme, depending on your career plans.
- You can talk to our careers advisors about the individual opportunities available to you.

Scan QR Code for an up to date list of our courses and to apply online!



72 ENGLISH FOR SPEAKERS OF OTHER LANGUAGES (ESOL)

ENTRY 1 & ENTRY 2

ESOL READING

Course Introduction

This course is a standalone qualification and is only available to those aged 19+, for those students aged 16-18 you would be required to undertake the ESOL Study Programme. This course starts in January and runs for 7-8 weeks. At that point you will undertake an end point exam and progression courses will be discussed.

Assessment method

This qualification is assessed using a variety of methods including examinations and formative assessment.

You will learn how to read and understand meaning and purpose in a variety of texts and how to obtain different information from a variety of sources, along with reference materials and spelling strategies to support understanding.

There are no entry requirements for this course. You will be interviewed and assessed once we have received your application and the specialist tutors will give you initial advice and guidance about the most appropriate course and level for you.

ENTRY 1 & 2

ESOL WRITING

This course is a standalone qualification and is only available to those aged 19+, for those aged 16-18 you would be required to undertake the ESOL Study Programme. This course starts in March and runs for 12 weeks. At that point you will undertake an end point exam and progression courses will be discussed.

Assessment method

This qualification is assessed using a variety of methods including examinations and formative assessment.

You will learn how to write to communicate ideas for different audiences and purposes as well as use of accurate spelling, punctuation and grammar.

There are no entry requirements for this course. You will be interviewed and assessed once we have received your application and the specialist tutors will give you initial advice and guidance about the most appropriate course and level for you.

PRE-ENTRY

ESOL ILP (NON ACCREDITED)

Starts: September, January, March

This is a course designed for students who are truly at the start of their learning journey with English. This course would also be beneficial to those who may have limited literacy skills in their first language. Students work on their own individual targets with a view to progressing onto a qualification. Delivery is face-to-face, twice a week in three hour sessions.

Course Fees

Many learners access ESOL courses for free, subject to status checks. If you do have to pay, fees range from £0 - £257 for home-status students.



ENTRY 3, LEVEL 1 & LEVEL 2

CITY AND GUILDS FUNCTIONAL SKILLS ENGLISH FOR ESOL LEARNERS

Starts: January

Students will develop their English skills in order to be able to take part in discussions and conduct presentations effectively. They will be able to complete complex forms, write reports, emails and letters in order to function in everyday life.

Assessment will include three exams as well as an initial entry diagnostic and informal assessments throughout the course. There are three components to Functional Skills English (these are reading, writing and speaking, listening and communicating). All three components are internally assessed and internally quality assured by the centre and externally quality assured by City & Guilds.

Applicants must be able to demonstrate that they are working towards the level of the course they are applying to during their initial assessment and interview to be offered a place. At interview, careers guidance will also be given to ensure that this is the most appropriate course.

ENTRY 1, 2 & 3

FUNCTIONAL SKILLS MATHS FOR ESOL LEARNERS

We also offer students enrolled on an ESOL course the opportunity to develop their mathematics by additionally enrolling onto a Functional Skills maths for ESOL learners. This is fully funded and will run for two hours a week throughout the year. Please ask your tutor for details once enrolled.



74 FOUNDATION STUDIES

Our Ofsted outstanding Foundation Studies department supports students in preparing for adulthood.

CAREER OPPORTUNITIES

Many students progress to vocational courses in College which can broaden career prospects. Look at other courses in the prospectus for career possibilities.

We carefully design our courses to build your skills, whether your aim is to access a vocational programme of study, or you are keen to develop your independent living skills, we can support you with this.

As a Foundation Studies student you will be part of an active College community, our flat on campus is a great learning aid for our students, supporting you to gain the independent living skills you will need for the future.

North Lindsey College's provision for students with high needs was graded Outstanding in March 2022.

"Tutors ensure that learners with high needs are provided with very effective support. Staff focus on ensuring that learners develop very relevant life skills and become increasingly resilient, independent and confident." - Ofsted



FEATURED STUDENT:
KUNDAI MONDE

SUPPORTED INTERNSHIPS

Course Duration: **1 Year**

Course Introduction

Supported internships are structured work-based study programmes for young people with an Education Health and Care Plan (EHCP) who would not be able to take on a standard apprenticeship. It is a great opportunity for you to develop hands-on experience in a real-life working environment. This is the exit year from college for those on the employment pathway.

Areas you may study include:

- Personal preparation for work
- Independent travelling
- Job search skills
- Effective behaviour at work
- Employability skills

Entry Requirements

- This is a planned course via EHCP annual reviews

ENTRY 2/3, LEVEL 1/2

CITY AND GUILDS EMPLOYABILITY SKILLS

Course Duration: **1 Year**

Entry Requirements: **No formal entry requirements**

Course Introduction

The Employability Skills qualifications support individuals in developing the skills and attitudes valued by employers.

The aim of the course is to help individuals successfully prepare for and get a job, then to provide them with the tools to succeed and advance in their role.

The Employability Skills qualifications have been designed with maximum flexibility in mind so they can meet all student requirements.

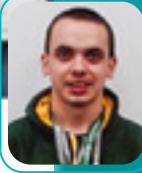
This qualification allows the student to demonstrate an enhanced knowledge and ability, utilising wider skills built on the basic key skills gathered from the smaller qualification.





STUDENT PROFILE

JAMIE LEE DAVISON



"Jamie attended St Hugh's School before joining the Foundation Department at North Lindsey College.

Throughout his time in Foundation, Jamie has experienced a wide variety of activities including community engagement, cooking, crafting and travel training. He has completed his Entry Level 2 Extended Award in Employability Skills.

Jamie took on the role as one of our Student Parliament representatives and attended all Parliament meetings across both sites of DN Colleges. He fully engaged in this role which helped to develop his communication skills and he grew in confidence.

Jamie carried out his work placement at Barnardo's Charity Shop and took it upon himself to find more volunteering hours out of college.

Jamie is progressing onto the Level 1 Animal Care at North Lindsey College.

Scan QR Code for
an up to date list of
our courses and to
apply online!



78

HAIRDRESSING AND BEAUTY THERAPY

If you're passionate about hair, beauty, and nails, then your journey into the industry starts right here.

CAREER OPPORTUNITIES

Hairdresser

£19,500 to £30,000

Barber

£19,500 to £30,000

Beauty Therapist

£16,000 to £25,000

Nail Technician

£15,500 to £22,000

Step into Ora, our commercial salon, where you'll learn in a supportive and professional environment. You'll expand your skills, undertaking treatments on real clients under the guidance of industry-experienced tutors.

Our fully equipped hair and beauty rooms and nail bar aren't just classrooms—they're spaces where you'll gain hands-on experience, allowing you to build strong relationships with regular clients.

With strong industry connections, you'll stay ahead with the latest sector trends, learning directly from experts through guest lectures, workshops, and even showcasing your talents in industry competitions.

No previous experience is required—just bring your enthusiasm for all things hair and beauty, and we'll help you turn it into a rewarding career.

LMI Data from the National Careers Service
June 2024

FEATURED STUDENT:
MIA LAMBERTI



LEVEL 2**CERTIFICATE
IN WOMEN'S
HAIRDRESSING**

Course Duration: 1 Year

*Assessment: 70% Practical
Assessments 30% Exam*

*Entry Requirements: 4 GCSEs
grade 9-3*

Mandatory units:

- Working in the hair industry
- Health and safety
- Client consultation
- Shampooing and conditioning hair and scalp
- Promoting products and services
- The art of hairdressing

Optional units:

- Creating image
- Display stock and promote sales
- Salon reception duties

• Progression routes include:

- Apprenticeship
- Employment
- Progress on to Level 3

LEVEL 2**DIPLOMA IN
WOMEN'S
HAIRDRESSING**

Course Duration: 1 Year

*Assessment: 70% Practical
Assessments 30% Exam*

*Entry Requirements: 4 GCSEs
grade 9-4*

Mandatory units:

- Working in the hair industry
- Health and safety
- Client consultation
- Shampooing and conditioning hair and scalp
- Promoting products and services
- Cutting hair
- Colour and lighten hair
- The art of hairdressing

Optional units:

- Creating image
- Display stock and promote sales
- Salon reception duties

• Progression routes include:

- Apprenticeship
- Employment
- Progress on to Level 3

LEVEL 3**DIPLOMA IN
HAIR SERVICES**

Course Duration: 1 Year

*Assessment: 70% Practical
Assessments 30% Exam*

*Entry Requirements: 4 GCSE
grades 4 or above in English &
maths including 1 science*

Mandatory units:

- Health and safety
- Client consultation
- Advanced cutting
- Advanced styling
- Advanced colouring
- Creative design

Optional units:

- Make and style a hair addition
- Bridal hair
- Promote and sell products
- Colour correction
- Salon reception duties
- Display and promote products

• Progression routes include:

- University
- Apprenticeship
- Employment

LEVEL 2**CERTIFICATE
IN NAIL
ENHANCEMENTS**

Course Duration: 1 Year

*Assessment: 70% Practical
Assessments 30% Exam*

*Entry Requirements: 4 GCSEs
grade 9-3*

Units you may study include:

- Working in the beauty related industries
- Health and safety
- Client care and communication
- Promote service and products
- Salon reception duties
- Provide manicure treatments
- Provide pedicure treatments
- Provide nail art
- Provide and maintain nail enhancements
- Apply make-up
- Display stock to promote sales in salon
- Provide lash and brow treatments
- Art of photographic make-up
- Body art design

• Progression routes include:

- Apprenticeship
- Employment
- Progress on to Level 3





STUDENT PROFILE

GENNA SIMMONS

After studying at South Axholme Academy, Genna completed a Level 2 and Level 3 Diploma in Beauty Therapy.

She always knew she wanted to open her own salon and after gaining three years' experience working as a beauty therapist at Forest Pines, Genna opened her own salon at the age of 20. Currently, she has 11 members of hair and beauty staff, working alongside her, at Secretly Beautiful in Misterton.

"I ABSOLUTELY LOVED THE COURSE AND KNEW MY PASSION WAS BEAUTY STRAIGHT AWAY. AT 20 I MADE THE LEAP TO OPEN MY OWN SALON. THE BEST PART OF MY JOB IS MAKING CLIENTS FEEL SPECIAL AND RELAXED SO THAT THEY KEEP RETURNING AND EVENTUALLY BECOME FRIENDS."

CAREERS

- Aromatherapist
- Beauty Therapist
- Hair Colourist
- Image Consultant
- Massage Therapist
- Retail Sales
- Sales Executive in Hair or Beauty
- Special Effects Make-Up Artist
- TV & Film Make-up & Hair Artist
- Salon Manager
- Beauty Consultant
- Hairdresser/Stylist
- Make-Up Artist
- Nail Technician
- Manager in Cosmetics and much more...

Scan QR Code for an up to date list of our courses and to apply online!



82 HAIRDRESSING AND BEAUTY THERAPY

LEVEL 2

CERTIFICATE IN BEAUTY THERAPY

Course Duration: **1 Year**

Assessment: **70% Practical Assessments 30% Exam**

Entry Requirements: **4 GCSEs grade 9-3**

Mandatory units:

- Working in the beauty industry
- Health and safety
- Client care and communication
- Promote products and services
- Salon reception duties
- Provide facial skincare
- Provide manicure treatments
- Provide pedicure treatments

Optional units:

- Apply makeup
- Creating an image

Progression routes include:

- Apprenticeship
- Employment
- Progress on to Level 3

LEVEL 2

DIPLOMA IN BEAUTY THERAPY

Course Duration: **1 Year**

Assessment: **70% Practical Assessments 30% Exam**

Entry Requirements: **4 GCSEs grade 9-4**

Mandatory units:

- Working in the beauty industry
- Health and safety
- Client care and communication
- Promote products and services
- Salon reception duties
- Provide facial skincare
- Remove hair using waxing techniques
- Provide manicure treatments
- Provide pedicure treatments
- Provide eyelash and brow treatments

Optional units:

- Makeup application
- Creating an image

Progression routes include:

- Apprenticeship
- Employment
- Progress on to Level 3

LEVEL 3

DIPLOMA IN BEAUTY THERAPY

Course Duration: **1 Year**

Assessment: **70% Practical Assessments 30% Exam**

Entry Requirements: **4 GCSE grades 4 or above in English and maths including one science**

Units you may study include:

- Monitor and maintain Health and Safety
- Promote and sell products
- Provide body massage
- Client care and communication
- Provide facial electrotherapy treatments
- Provide body electrotherapy treatments
- Provide electrical epilation
- Spray tanning
- Apply individual permanent lashes
- Apply micro-dermabrasion
- Apply stone therapy massage
- Maintain personal health and wellbeing

Progression routes include:

- University
- Employment
- Apprenticeship



**ALONGSIDE YOUR PROGRAMME
OF STUDY, YOU MAY ALSO GET
OPPORTUNITY TO COMPLETE THE
FOLLOWING QUALIFICATIONS:**

Gel nails

Brow lamination

LVL lashes



84 **HEALTH & SOCIAL CARE**

In 2024, approximately 1.3 million people are employed by the NHS and there are still over 100,000 unfilled vacancies, providing a wide range of opportunities actively available in this sector.

CAREER OPPORTUNITIES

Care Home Manager

£25,000 to £55,000

Physiotherapist

£28,000 to £50,000

Social Worker

£27,000 to £50,000

Nurse

£28,000 to £43,000

The Health and Social Care sector encompasses a wide array of organisations dedicated to providing healthcare and support services. It can include hospitals, nursing homes, dental clinics, social care support and much more - this sector is diverse and vital.

To prepare you for the world of work, the College have invested in a brand-new health training suite which includes two nursing stations, full nursing equipment, nano-gastric equipment, dementia simulation, bedside care facilities, hoists, wheelchairs, infection control and CPR equipment - our facilities ensure hands-on, practical learning that mirrors real-life healthcare environments.

FEATURED STUDENT:
WIKTORIA TUREK



86 HEALTH & SOCIAL CARE

LEVEL 1

AWARD IN PREPARING TO WORK IN ADULT SOCIAL CARE

Course Duration: **1 Year**

Assessment: **100% coursework**

Entry Requirements: **No formal entry requirements although learners should have an interest in pursuing a career in the health and social care sector**

Units you may study include:

- Introduction to the adult social care sector
- Introduction to the values and principles of adult social care
- Awareness of the skills and attitudes needed to work in adult social care
- Awareness of communication in adult social care
- Awareness of the roles and responsibilities of the adult social care worker

Progression routes include:

- Progress on to T Level Health Transition Programme – Health
- Employment
- Apprenticeship

LEVEL 2

CERTIFICATE PREPARING TO WORK IN ADULT SOCIAL CARE

Course Duration: **1 Year**

Assessment: **100% coursework**

Entry Requirements: **GCSE maths and English grades 2 or 3**

Units you may study include:

- Principles of communication
- Principles of personal development
- Principles of diversity, equality and inclusion
- Principles of safeguarding and protection
- Introduction to duty of care
- Understand the role of the social care worker
- Understand person-centred approaches
- Understand health and safety
- Understand how to handle information

Progression routes include:

- T Level Health Foundation Year Programme or higher study in Health & Social Care at level 3.
- Employment
- Apprenticeship

LEVEL 3

NATIONAL FOUNDATION DIPLOMA HEALTH AND SOCIAL CARE

Course Duration: **1 Year**

Assessment: **59% coursework, 41% exams**

Entry Requirements: **Maths and English GCSE grade at 4 or higher. Grade 4+ in a minimum of three other Level 2 subjects is an advantage but can be discussed at enrolment. Grade 4+ in a science may be an advantage if you are hoping to progress to university to study a health related programme.**

Units you may study include:

- Human Lifespan Development
- Working in Health & Social Care
- Meeting Individual Care and Support Needs
- Principles of Safe Practice in Health and Social Care
- Sociological Perspectives
- Psychological Perspectives

Progression routes include:

- Level 3 National Extended Diploma
- University
- Employment
- Apprenticeship



STUDENT PROFILE

CHLOE SMITH



Previous Outwood Academy Brumby student, Chloe is now working as a pharmacy dispenser for the NHS. After finishing school Chloe always knew she wanted to have a career in the NHS. She enrolled on a Level 3 Technical Extended Diploma in Health and Social Care and achieved an A grade, equivalent to three A's at A Level. She completed work experience in community care and at an SEN school. Recently, Chloe graduated from the University of Hull with a BSc (Hons) in Biomedical Science.

“THE PLACEMENTS AT NORTH LINDSEY COLLEGE PROVIDED OPPORTUNITIES TO EARN CERTIFICATES SUCH AS FIRST AID AND SAFEGUARDING, WHICH BOOSTED MY CV. THE TUTORS CREATED A FANTASTIC ENVIRONMENT THAT INSPIRED US TO LEARN. THEY TRULY COVERED EVERYTHING AND PERFECTLY PREPARED ME AND MY SKILLS FOR FURTHER CAREER PROGRESSION.”

CAREERS

- Nurse
- Cosmetics Nurse
- Paramedic
- Occupational Therapist
- Social Worker
- Physiotherapy Assistant
- Care Assistant
- Occupational Health
- Nurse Audiologist
- Counsellor
- Psychotherapist
- Probation Officer
- Safeguarding Officer
- Health Care Assistant
- Podiatrist
- Activities Co-Ordinator
- Support Worker
- Nurse Associate
- Emergency Medical Dispatcher
- Practice Nurse and much more...

Scan QR Code for an up to date list of our courses and to apply online!



T-LEVELS

THE NEXT LEVEL QUALIFICATION

T LEVEL

FOUNDATION YEAR HEALTH

Course Duration: **1 Year**

Assessment Method: **100% coursework**

Entry Requirements: **Grade 4 in GCSE maths or English (with one of these grades at 4+)**

Units you may study include:

- Equality, diversity and rights in health and social care
- Human growth and development
- Safeguarding and protection in health and social care
- Communication in health and social care
- Working in health and social care
- Anatomy and physiology for health and social care
- Common care disorders

Progression routes include:

- Progress on to T Level – Health
- Employment
- Apprenticeship

T-LEVELS

THE NEXT LEVEL QUALIFICATION

T LEVEL

HEALTH (SUPPORTING THE ADULT NURSING TEAM PATHWAY)

Course Duration: **2 years**

Assessment: **2 written examinations, employer set project, case study assessment, 2 practical activity assessments and professional discussion**

Entry Requirements: **Grade 4 or above in GCSE maths, English and Science**

Units you may study include:

- Working within the health and science sector
- The healthcare sector
- Health, safety and environmental regulations in the health and science sector
- Health and safety regulations applicable in the healthcare sector
- Managing information and data within the health and science sector
- Managing personal information
- Good scientific and clinical practice
- Providing person-centred care
- Health and wellbeing
- Infection prevention and control in health specific settings
- Safeguarding
- Science concepts

Progression routes include:

- University
- Employment
- Apprenticeship
- Progression to University Campus North Lincolnshire (UCNL)





North Lindsey
College
Health and Social Care

90

HUMBER ENERGY SKILLS TRAINING ACADEMY

Leading regional specialist provider of bespoke apprenticeships and training, based in Hull but part of DN Colleges Group (DNCG).

CAREER OPPORTUNITIES

Electrical Engineer

£27,000 to £58,000

Plumber

£21,000 to £40,000

Aircon Engineer

£20,000 to £35,000

LMI Data from the National Careers Service
June 2024

The Humber Energy Skills Training Academy support the delivery of sustainable solutions to the energy industry, offering both FE courses and apprenticeships.

The only provider of Refrigeration, Air Conditioning and Heat Pump apprenticeships (RACHP) within a 90-mile radius of Hull, and the 5th largest provider of apprenticeships in England being part of DNCG.



**Humber Energy Skills
Training Academy**

Humber Energy see themselves as more than just a college, building relationships with future talent, and have close links with employers who head hunt students for their apprenticeship vacancies.

Add in small class sizes, a friendly team and individualised learning this is a great place to train. If you're looking to progress into plumbing and domestic heating, electrical installation and maintenance or access to building services, the Humber Energy Skills Training Academy might be for you.

FEATURED STUDENT:
BRANDON NEWLOVE



LEVEL 2

DIPLOMA IN ACCESS TO BUILDING SERVICES ENGINEERING

Course Introduction

Want a career in Building Services Engineering but not sure about which area to go into? This ten month introductory qualification gives you a flavour of the skills involved in four different areas of building services engineering:

- Plumbing
- Electrical installation
- Heating and ventilating
- Refrigeration and air conditioning

You'll find out what you enjoy then you can move onto a specialist qualification or apprenticeship in either plumbing, electrical, heating and ventilating or refrigeration, air conditioning and heat pump systems. Also included within the course:

- Student support
- Work experience
- Employer interactions
- Access to fully equipped workshop
- Enrichment programme
- You are encouraged to have a part-time job to gain experience of the world of work
- Possible bursary opportunity dependent on parent/carer's income
- Opportunity to take part in the Duke of Edinburgh Award

Units you may study include:

Students must complete the following compulsory units to achieve the qualification. These units are assessed by online tests and practical application.

Practical

- Understand and demonstrate fundamental refrigeration and air conditioning operations
- Understand and demonstrate fundamental electrical installation operations
- Understand and demonstrate fundamental heating and ventilating operations
- Understand and demonstrate fundamental plumbing operations

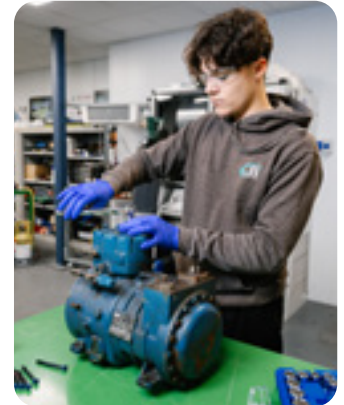
Theory

- Understand and carry out safe working practices in building services engineering
- Understand how to apply environmental protection measures within building services engineering
- Understand the roles, responsibilities and procedures in building services engineering
- Understand how to apply scientific principles within mechanical engineering services

WE ALSO OFFER THE FOLLOWING APPRENTICESHIPS:

Refrigeration, Air Conditioner and Heat Pump Engineering Technician apprenticeship

Electrical Installation Apprenticeship





STUDENT PROFILE

MAX ROOTS

Max chose Humber Energy Skills Training Academy (HESTA) because he had heard great reviews about learning the RACHP trade, which is what he wanted to get a qualification in. Max also had heard that the staff are very helpful and believed that this would be the best place for him after leaving Wolfreton School.

“MY TIME AT HUMBER ENERGY TRAINING ACADEMY HAS BEEN VERY GOOD, I’VE LEARNT SO MUCH. THE STAFF HAVE HELPED ME A LOT ESPECIALLY WITH MY EPA AND EVEN WITH SOME LIFE SKILLS WHICH HAVE HELPED ME OUTSIDE OF WORK. I WOULD DEFINITELY RECOMMEND HERE TO ANYONE WANTING A CAREER IN THIS INDUSTRY. SINCE PASSING MY EPA I HAVE PROGRESSED TO RUNNING MY OWN AC INSTALLS IN MY OWN VAN. IN THE FUTURE I WOULD ONE DAY LIKE TO OWN MY OWN COMPANY.”

CAREERS

- Refrigeration, Air Conditioning Technician
- Heat Source Pump Technician/Engineer
- Installation Electrician
- Maintenance Electrician
- Maintenance Operations Engineering Technician
- Renewables Technician/Engineer and much more...

Scan QR Code for an up to date list of our courses and to **apply online!**



94 MOTOR VEHICLE

If you have a passion for transforming and fixing vehicles, from cars to HGVs, motorbikes to scooters, or even specialist vehicles, then our motor vehicle courses are your perfect path.

CAREER OPPORTUNITIES

Automotive Engineer

£20,000 to £45,000

Motor Vehicle Breakdown Engineer

£25,000 to £40,000

Motor Mechanic

£18,000 to £35,000

Vehicle Body Repairer

£15,000 to £30,000

At our multi-million-pound Engineering Technology Centre, you'll learn from tutors with industry experience, setting you up for success in your career.

Here you will find North Lincolnshire's only college-based drive-in spray booth, along with a diverse fleet of cars and HGVs, cutting-edge computerised diagnostic rigs, MOT bays, a fast fit centre, and even hybrid and electric vehicles.

Students also benefit from a range of additional learning opportunities and access to our sector leading workshops which make us the first choice for so many people.

FEATURED STUDENT:
JOSHUA CAIRNS



LEVEL 1

DIPLOMA IN VEHICLE SYSTEMS MAINTENANCE

Course Duration: **1 Year**

Assessment: **100% Coursework**

Entry Requirements: **Grade 0-3 in maths and English at GCSE**

Units you may study include:

- Engine lubrication systems
- Engine coding systems
- Fuel and exhaust systems
- Spark ignition systems
- Vehicle electrical systems
- Braking systems
- Vehicle transmission
- Steering and suspension
- Wheels and tyres
- Engine operation principals
- English
- Maths

Progression routes include:

- Employment
- Apprenticeship

LEVEL 2

DIPLOMA IN LIGHT VEHICLE MAINTENANCE

Course Duration: **1 Year**

Assessment: **100% Coursework**

Entry Requirements: **Grade 3 English and grade 4 in maths at GCSE**

You will complete 18 units covering a wide range of light vehicle maintenance skills. In addition, you will also work on developing your maths skills alongside the course.

You will build skills in:

- A variety of vehicle systems
- Investigative skills
- Problem solving skills
- Practical skills

Progression routes include:

- Employment
- Apprenticeship

LEVEL 2

T LEVEL FOUNDATION LEVEL 2 IN MOTOR VEHICLE

Course Duration: **1 Year**

Assessment: **100% Coursework**

Entry Requirements: **Grade 4 maths and English at GCSE**

This course is designed to help students transition onto the Level 3 T Level. Students will apply a range of theory skills taking part in practical tasks.

You will build:

- Practical skills in motor vehicle
- Engineering skills
- Problem solving skills
- Academic writing skills

Progression routes include:

- Employment
- Apprenticeship

T-LEVELS

THE NEXT LEVEL QUALIFICATION

T LEVEL

MOTOR VEHICLE

Course Duration: **2 Years**

Assessment: **100% Coursework & Practical Skills**

Entry Requirements: **Grade 5 maths and English at GCSE, under 19 years old**

This programme of study is equivalent to three A Levels

Units you may study include: Year 1

The first year of the course is coursework based developing your knowledge of engineering techniques and skills.

You will learn about:

- Electrical engineering
- Mechanical engineering
- Hydraulics
- Pneumatics
- Engineering theories

Year 2

In the second year you will apply the knowledge you have learnt specialising in motor vehicle. You will apply the theories you have learnt to a range of practical tasks.

Progression routes include:

- University
- Employment
- Apprenticeship





STUDENT PROFILE



CONNOR JAMES BRENNAN

"After finishing his Level 2 Motor Vehicle course in 2023, previous Outwood Academy Foxhills student Connor James Brennan is now completing a Level 3 Motor Vehicle Apprenticeship at Bruce Cousin Motors.

Connor has aspirations of becoming a qualified mechanic to follow in his father's footsteps, having grown up repairing cars alongside him in their family garage.

"I LIKE HOW THE COURSE BALANCES PRACTICAL AND THEORY. THE TUTORS HAVE HELPED ME OUT SO MUCH, SUPPLYING ME WITH A LAPTOP FOR ME TO GO ALL OF MY THEORY WORK. I ASPIRE TO BE A FULLY QUALIFIED MECHANIC AND MAYBE A GARAGE OWNER ONE DAY."

CAREERS

- Electric Vehicle Technician
- MOT Tester
- Motorsport Engineer
- Workshop Supervisor
- HGV Technician
- Tyre Fitter
- Paint Technician
- Mechanic
- Breakdown Engineer
- Senior Technician
- Garage Manager
- Service Advisor
- Motor Vehicle Insurance Adviser
- Panel Beater Valeting and much more...

Scan QR Code for an up to date list of our courses and to apply online!



98 MUSIC

Did you know? The UK music industry ranks third globally, contributing over £6.7 billion to the economy in 2022 - making it a hub of boundless career opportunities.

CAREER OPPORTUNITIES

Musician

Variable

Music Therapist

£25,000 to £50,000

Sound Technician

£21,000 to £45,000

Live Sound Engineer

£25,000 to £30,000

Our music department supports students to develop both their performance and technical skills. Our state-of-the-art facilities provide the perfect backdrop for learning, guided by tutors with extensive industry experience.

During your journey with us, you will dive into your chosen path of music production or performance. From composition to sound recording, mixing to live performance, our music courses cover it all. You'll hone your skills through hands-on experience and specialise in your final major project, equipping you with the expertise needed for your unique career path. Join us and unlock your potential in the dynamic world of music.

LMI Data from the National Careers Service
June 2024

FEATURED STUDENT:
MATTHEW STACEY



LEVEL 2

UAL DIPLOMA IN MUSIC PERFORMANCE AND PRODUCTION

Course Duration: **1 Year**

Assessment: **40% Coursework 60% Practical**

Entry Requirements: **4 GCSEs at grade 3 including English and maths. Instrumentalist/Vocalist do not need to have a graded music certificate, however, we do expect skills level to be at grade 3 standard.**

Students have the opportunity to specialise either in music performance or music production, developing their music tech skills.

Units you may study include:

- Introduction to music performance
- Introduction to music production
- Listening skills for music performance and production
- Exploring music composition
- Contextual research for music performance and production
- Music performance skills and practice
- Music production skills and practice
- Music performance and production project

Progression routes include:

- UAL Level 3 Diploma in Music Performance and Production
- Employment
- Apprenticeship

ual: awarding body



LEVEL 3

UAL DIPLOMA IN MUSIC PERFORMANCE AND PRODUCTION

Course Duration: **1 Year**

Assessment: **40% Coursework 60% Practical**

Entry Requirements: **5 GCSEs at grade 9-4 including English and maths. Instrumentalist/Vocalist do not need to have a graded music certificate, however, we do expect skills level to be at grade 4 standard or Level 2 UAL Diploma in Music Performance and Production.**

Students have the opportunity to specialise either in music performance or music production, developing their music tech skills.

Units you may study include:

- Principles of music performance and production
- Critical listening and music composition
- Music industry and professional practice
- Critical and contextual awareness for music performance and production
- Music production in context
- Music performance in context
- Preparation for specialist study in music performance and production
- Collaborative music performance project

Progression routes include:

- UAL Extended Diploma in Music Performance and production
- University
- Employment
- Apprenticeship



LEVEL 3

UAL EXTENDED DIPLOMA IN MUSIC PERFORMANCE AND PRODUCTION

Course Duration: **2 Years**

Assessment: **40% Coursework 60% Practical**

Entry Requirements: **5 GCSEs at grade 9-4 including English and maths. Instrumentalist/Vocalist do not need to have a graded music certificate, however, we do expect skills level to be at grade 4 standard or Level 3 UAL Diploma in Music Performance and Production.**

Students have the opportunity to specialise either in music performance or music production, developing their music tech skills.

Units you may study include:

- Principles of music performance and production
- Critical listening and music composition
- Music industry and professional practice
- Critical and contextual awareness for music performance and production
- Music production in context
- Music performance in context
- Preparation for specialist study in music performance and production
- Collaborative music performance project

Progression routes include:

- University
- Employment
- Apprenticeship





STUDENT PROFILE

ELEXISS DENNIS



Elexiss Dennis, former Outwood Academy Brumby student, studied a Level 3 Extended Diploma in Music Performance and Production with us from 2022 - 24. She is also one half of a band called September 6th, who received regional recognition being named finalists at Spotlight: The Big North Lincolnshire Talent Show in 2024.

Elexiss is now completing a three year joint honours degree in Music Performance and Songwriting at BIMM Music Institute with the aim of becoming a singer/songwriter in the industry.

“I CAME ON LEAPS AND BOUNDS AS A STUDENT AND AS A PERSON DURING THE TWO YEAR COURSE. I NEVER BELIEVED I WOULD BE HERE NOW, LET ALONE BE LIVING TO MANCHESTER TO FOLLOW MY DREAMS, AND I CAN’T THANK NORTH LINDSEY ENOUGH FOR THIS.”

CAREERS

- Musician
- Songwriter
- Sound Engineer
- Artist Manager
- Tour Manager
- Representation
- Producer
- Composer
- Teacher/Lecturer
- Publicist
- Music Journalist
- Technician
- Stage Management and much more...

Scan QR Code for an up to date list of our courses and to apply online!



102 PERFORMING ARTS

Our performing arts department champions students with a wide range of talents and ambitions in acting, dance, or musical theatre, ensuring every performer's dreams can flourish.

CAREER OPPORTUNITIES

Stage Manager

£22,000 to £48,000

Actor

Variable

Dancer

Variable

Choreographer

Variable

Immerse yourself in full-time training within our large studio spaces, where you'll experience a blend of internal and external performances throughout your course. Students can access professional training, industry headshots, one-to-one free audition preparation, in-house auditions for stage school, and workshops with industry professionals and much more.

Our track record speaks for itself—our graduates consistently secure placements at top performing arts schools, colleges and universities across the country. These include Italia Conti, Arts Ed, Performers College, Rose Bruford, Collective Actors Studio, Addict, Jelli Studios, Northern School of Acting, Hammond, Stella Mann and Royal Academy of Dance.

LMI Data from the National Careers Service
June 2024

FEATURED STUDENT:
LILY CALVERT



104 **PERFORMING ARTS**

LEVEL 2

UAL AWARD IN PERFORMING & PRODUCTION ARTS (ACTING, DANCE OR MUSICAL THEATRE)

Course Duration: 1 Year

Assessment: 100% Internal assessment

Entry Requirements: Successful audition

Units you may study include:

- Introduction to performance
- Introduction to production

Progression routes include:

- UAL Level 2 Diploma in Performing & Production Arts (Acting, Dance or Musical Theatre)
- Further study
- Employment
- Apprenticeship

LEVEL 2

UAL DIPLOMA IN PERFORMING & PRODUCTION ARTS (ACTING, DANCE OR MUSICAL THEATRE)

Course Duration: 1 Year

Assessment: 100% Internal assessment

Entry Requirements: 4 GCSEs graded 3 or above including maths, English and a successful audition

Units you may study include:

- Introduction to performance
- Introduction to production
- Communicating with an audience
- Staging a performance
- Contextual research for performance and production
- Performance skills and practice
- Production skills and practice
- Personal project and presentation
- Producing and performing to an audience

Progression routes include:

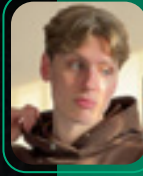
- UAL Level 3 Diploma in Performing & Production Arts (Acting, Dance or Musical Theatre)
- Further study
- Employment
- Apprenticeship

ual: awarding
body





STUDENT PROFILE



RIO FONTE

Former St. Bede's Catholic Voluntary Academy student, Rio Fonte completed our Level 3 Extended Diploma in Performing Arts (Acting Pathway) with aspirations of becoming an actor and/or TV presenter. Rio is now a student at the Liverpool Media Academy (LMA) where he is continuing his acting studies at degree level.

"I TOOK DRAMA AS A GCSE IN SCHOOL AND LOVED IT, SO IT WAS A NO BRAINER THAT I WOULD TAKE ACTING AT NORTH LINDSEY. THE TUTORS AT COLLEGE ARE SO DETERMINED FOR THEIR STUDENTS TO DO WELL AND ARE SO SUPPORTIVE. IT WAS THE BEST AND MOST BENEFICIAL TWO YEARS EVER. THE TUTORS, THE PEOPLE, THE COURSE; EVERYTHING WAS JUST AMAZING."

CAREERS

- Professional Dancer
- Musical Theatre Performer
- Actor (Advertising, Film, Radio, Theatre, TV)
- TV Presenter
- Radio Host
- Broadcast Journalist
- Choreographer
- Teacher
- Community Arts Worker
- Vlogger
- Media Researcher
- Creative Production
- Teacher
- TV Presenter Vlogger
- Stage Manager
- Screenwriter
- Musician
- Studio Sound Engineer and much more...

Scan QR Code for an up to date list of our courses and to **apply online!**



106 **PERFORMING ARTS**

LEVEL 3

UAL DIPLOMA IN PERFORMING & PRODUCTION ARTS (ACTING, DANCE OR MUSICAL THEATRE)

Course Duration: 1 Year

Assessment: 100% Internal assessment

Entry Requirements: 5 GCSEs graded 4 or above including maths, English and a successful audition

Units you may study include:

- Principles of performance
- Engaging with an audience
- Introduction to professional practice
- Critical and contextual awareness
- Production skills and context
- Performance skills and context
- Preparation for specialist study
- Collaborative performance project

Progression routes include:

- UAL Level 3 Extended Diploma in Performing & Production Arts (Acting, Dance or Musical Theatre)
- Further study
- Employment
- Apprenticeship

ual: awarding
body

LEVEL 3

UAL EXTENDED DIPLOMA IN PERFORMING & PRODUCTION ARTS (ACTING, DANCE OR MUSICAL THEATRE)

Course Duration: 1 Year

Assessment: 100% Internal assessment

Entry Requirements: 5 GCSEs graded 4 or above including maths, English and a Performing Arts subject. To gain entry on this course you must have successfully completed a Level 3 Diploma in Performing Arts

This programme of study is equivalent to three A Levels

Units you may study include:

- Developing performance and production skills
- Preparing for progression
- Exploration of specialist study and context
- Extended project

Progression routes include:

- University
- Employment
- Apprenticeship





108

SPORT, PHYSICAL ACTIVITY AND EXERCISE SCIENCE

With sport and physical activity contributing £39 billion to the UK economy, there has never been a better time to pursue a career in this dynamic sector.

CAREER OPPORTUNITIES

Sport and Exercise Psychologist

£20,000 to £48,000

PE Teacher

£30,000 to £47,000

Sports Coach

£18,000 to £28,000

Fitness Instructor

£17,000 to £27,000

Our programmes are the ideal training ground for aspiring professionals in sports science, sports therapy, PE teaching, coaching, exercise and fitness, sport and exercise science, or instructing. Many of our students advance their skills further by moving on to university, securing jobs, or embarking on apprenticeships after completing their courses.

Our top-level facilities include an on-site gym, fitness studios, a confidence course, MUGA and a football pitch.

For over three years, we've proudly held the industry-standard TASS accreditation, which recognises our commitment to supporting talented athletes while they continue their education. Our TASS alumni include a Commonwealth and Team GB boxing champion, semi-pro footballers, tennis players, weightlifters, professional dancers, talented golfers and a Team GB cyclist. Join us and become part of this thriving community!

LMI Data from the National Careers Service
June 2024

FEATURED STUDENT:
OLIVER JARVIS



110 **SPORT, PHYSICAL ACTIVITY AND EXERCISE SCIENCE**

LEVEL 1

AWARD IN SPORT & UNIFORMED SERVICES

Course Duration: 1 Year

Assessment: 100% Coursework & Practical Skills

Entry Requirements: This programme of study is designed for students who have not achieved a grade 4 at GCSE in maths and English

Units you may study include:

- Taking part in exercise and fitness
- Planning own fitness programme
- Preparing for an interview
- Working in a team
- Participating in sport or active leisure activities
- Anatomy and physiology
- Planning a healthy diet
- Employability skills and technical skills

Progression routes include:

- Progress onto Level 2 Sport and Active Leisure or Level 2 Gym Instructing
- Employment
- Apprenticeship

LEVEL 2

CERTIFICATE IN SPORT, HEALTH AND WELLBEING

Course Duration: 1 Year

Assessment: 100% Coursework & Practical Skills

Entry Requirements: Grade 4 in either maths or English at GCSE or Level 1 in Sport and Uniformed Services

Units you may study include:

- Participating in sport
- Anatomy and physiology for exercise
- Healthy exercise and nutrition
- Sports coaching
- Physical fitness and injuries in sport
- Planning a sports event
- Plan, deliver and evaluate an activity session

Progression routes include:

- Progression to Level 2 Certificate in Gym Instructing or Level 3 Extended Diploma in Sport & Exercise Science
- Apprenticeship
- Employment

LEVEL 2

CERTIFICATE IN GYM INSTRUCTING

Course Duration: 1 Year

Assessment: 100% Coursework & Practical Skills

In addition to the Gym Instructing qualification, you will also undertake a Circuit Training qualification

Entry Requirements: Learners would typically need a grade 4 in either maths or English

Units you may study include:

- Anatomy and physiology for exercise
- Maximising the customer experience in a gym environment
- Support client health and wellbeing
- Conduct client consultations and gym inductions
- Planning and reviewing gym-based exercise programmes
- Instructing and supervising gym-based exercise programmes

Progression routes include:

- Progress to Level 3 Certificate in Personal Training
- Apprenticeship
- Employment

LEVEL 3

DIPLOMA IN SPORT MASSAGE THERAPY

Course Duration: 1 Year on a part time basis of one day per week

Assessment: Multiple choice exam, three practical assessments and portfolio based

Entry Requirements: Grade 4 and above in English and maths. Ideally suited to 19+ students or those that have completed two years at college prior

Units you may study include:

- Anatomy and physiology
- Sports massage treatments
- Understand the principles of soft tissue dysfunction
- Principles of health and fitness

Progression routes include:

- University
- Employment
- Progression to University Campus North Lincolnshire (UCNL)





STUDENT PROFILE

ELLISE RYMER



Ellise Rymer completed a Level 3 Extended Diploma in Sport Science with us and alongside, was a Talented Athlete Scholarship Scheme (TASS) member, as she made up part of the England National Girls team for golf.

Ellise has progressed to gain a 100% scholarship in North Carolina, USA where she is studying sports management and competing in golf professionally.

“I REALLY ENJOYED MY TIME AT NORTH LINDSEY COLLEGE, IT HELPED TO SUPPORT WITH MY SCHOLARSHIP AT NC STATE UNIVERSITY, NORTH CAROLINA, WHERE I AM STUDYING SPORT MANAGEMENT WHILST FULFILLING A TRAINING SCHEDULE WITHIN GOLF. I CHOSE TO STUDY AT NORTH LINDSEY COLLEGE BECAUSE THE COURSE HAD NO EXAMS WHICH REALLY SUITED THE WAY I LIKE TO WORK. THE TIMETABLE WAS A FULL-TIME COLLEGE COURSE BUT OVER A BUSY TWO AND HALF DAYS A WEEK WHICH SUITED MY GOLF TRAINING SCHEDULE AND BEING A MEMBER OF THE TASS SCHEME ALLOWED ME TO HAVE CONTINUED SUPPORT WHILST STUDYING.”

CAREERS

- PT Instructor
- Professional Athlete
- Fitness Instructor
- Gym Manager
- Sport Development Officer
- Sport Coach
- Sport & Exercise Scientist
- Sport Nutritionist
- Sport Therapist
- Sport Technologist
- Environmental Health
- Paramedic
- Physiotherapist
- Podiatrist
- Sport Psychologist
- Leisure Attendant
- PE Teacher/Tutor
- Community Sport Coordinator
- Personal Trainer
- Health Trainer
- Wellness Coach and much more...

Scan QR Code for an up to date list of our courses and to apply online!



LEVEL 3

CERTIFICATE IN PERSONAL TRAINING

Course Duration: 1 Year

Assessment: 100% Coursework & Practical Skills

Entry Requirements: Grade 4 English and maths at GCSE. Level 2 Certificate in Gym Instructing

Units you may study include:

- Know how to support clients who take part in exercise and physical activity
- Health, safety and welfare in a fitness environment
- Principles of exercise, fitness and health
- Anatomy and physiology for exercise and health
- Programming personal training with clients
- Delivering personal training sessions
- Applying the principles of nutrition to a physical activity programme

Progression routes include:

- Employment
- Apprenticeship
- Progression to University Campus North Lincolnshire (UCNL)



LEVEL 3

EXTENDED DIPLOMA IN SPORT & EXERCISE SCIENCE

Course Duration: 1-2 Years

Assessment: 100% Coursework & Practical Skills

Entry Requirements: Grade 4 maths and English at GCSE

This programme of study is equivalent to three A Levels

Units you may study include:

Year 1

- Sports coaching
- Practical team sports
- Instructing physical activity
- Principles of anatomy and physiology
- Fitness training and programming
- Fitness testing
- Preparing for a career in sport and physical activity
- Exercise, health and lifestyle
- Sports injuries
- Physiology of fitness
- Biomechanics

Year 2

- Sport and exercise massage
- Analysis for sports performance
- Leadership in sport
- Strength and conditioning
- Sports nutrition
- Psychology for sports performance
- Organising sports events
- Laboratory and field-based experiment methods

Progression routes include:

- University
- Employment
- Apprenticeship
- Progression to University Campus North Lincolnshire (UCNL)

LEVEL 3

EXTENDED DIPLOMA IN SPORT & PHYSICAL ACTIVITY (SPORTS COACHING)



Course Duration: 1-2 Years

Assessment: 100% Coursework & Practical Skills

Entry Requirements: A minimum of 5 GCSEs at grade 4 and above including maths and English. The correct candidate should have an interest in playing regular football

This programme of study is equivalent to three A Levels

Scunthorpe United Football & Education Scholarship

You can expect to undertake up to 10 hours of football training per week, plus match days, supported by 15 hours' classroom-based training per week.

Units you may study include:

Year 1

- Exercise, health and lifestyle
- Preparing for a career in sport and physical activity
- Sports coaching
- Fitness testing for sport and exercise
- Principles of anatomy and physiology
- Assessing risk in sport
- Current issues in sport
- Technical and tactical skills in sport
- Instructing physical activity and exercise

Year 2

- Practical team sports the physiology of fitness
- Psychology of sports performance
- Analysis of sports performance sports nutrition
- Sports injuries
- Organising sports events
- Work experience in sport
- The athletes' lifestyle

Progression routes include:

- University
- Employment
- Apprenticeship
- Progression to University Campus North Lincolnshire (UCNL)



**ALONGSIDE YOUR PROGRAMME
OF STUDY, YOU MAY ALSO GET
OPPORTUNITY TO COMPLETE THE
FOLLOWING QUALIFICATIONS:**

Level 2 Award in Instructing Circuit Training

Level 2 Studio Cycling

Level 1 Mental Health Awareness

Level 1 Award in Safeguarding

Level 1 Award in Alcohol Awareness

Level 1 Award in Exercise Studies

114 **TRAVEL & TOURISM**

Britain will have a tourism industry worth £257 billion by 2025 – just under 10% of UK GDP and supporting almost 3.8 million jobs, which is around 11% of the total UK number.

CAREER OPPORTUNITIES

Hotel Manager

£20,000 to £60,000

Travel Agent

£18,000 to £34,000

Cabin Crew

£15,000 to £30,000

Tourist Information Centre Assistant

£15,000 to £25,000

The world is your oyster! Many of our students embark on exciting careers as cabin crew, travelling the globe, while others find rewarding roles in airports as ground staff, or work in events, UK tourism, restaurants and more.

At our college, we have unique facilities, including an air cabin, making us the only college in the region where students can experience life as an aircraft crew member.

Our travel and tourism students embark on incredible adventures. They recently took part in a two-week, fully funded work experience trip to Fiji through the Government Turing Scheme. We maintain strong industry connections and stay in touch with our alumni, who have become experts in their field. Join us and explore a world of opportunities!

FEATURED STUDENT:
OLIWIA JASKULSKA

LEVEL 2

DIPLOMA IN INTRODUCTION TO CABIN CREW

Course Duration: **1 Year**

Assessment: **100% Coursework**

Entry Requirements: **For students 17 and over**

Units you may study include:

- Airline health, safety and security
- Aircraft emergency situations
- Dealing with passengers on-board an aircraft
- Cabin service - selling techniques
- Making passenger announcements on board an aircraft
- Investigate employment opportunities for resort representatives
- Prepare for the start of the holiday season
- Manage airport and transport duties

Progression routes include:

- Progress on to Level 2 Extended Certificate or Level 3 Certificate in Travel and Tourism
- Employment
- Apprenticeship

LEVEL 2

EXTENDED CERTIFICATE IN TRAVEL AND TOURISM

Course Duration: **1 Year**

Assessment: **100% Coursework**

Entry Requirements: **4 GCSEs grade 4 and under**

Units you may study include:

- Travel and tourism destinations
- Customer service
- Specialist tourism
- Hospitality
- Introduction to travel and tourism industry

Progression routes include:

- Progress on to Level 3 Certificate in Travel and Tourism
- Employment
- Apprenticeship

LEVEL 2

CERTIFICATE IN AVIATION ENVIRONMENT

Course Duration: **1 Year**

Assessment: **Portfolio work**

Entry Requirements: **GCSE maths & English grade 4**

Units you may study include:

- Health & safety in aviation
- Aviation security
- Aviation communications
- Customer service in aviation
- Problem solving in aviation
- Sales skills
- Check-in process and travel documentation
- Passenger baggage processing
- Passengers with special needs
- Ground service operations
- Loading and unloading
- Aircraft marshalling
- Dangerous goods
- Aircraft turn around

Progression routes include:

- Employment
- Further Education
- Apprenticeship

LEVEL 3

CERTIFICATE IN TRAVEL AND TOURISM

Course Duration: **1-2 Years**

Assessment: **100% Coursework**

Entry Requirements: **4 GCSE grades 4 and above including English and maths**

The two years of study equates to two A Levels

Units you may study include:

- The UK travel and tourism industry
- Customer service in travel and tourism
- Preparing for a career in travel and tourism
- Travel and tourism destinations
- Resort representative roles and responsibilities
- Investigating air cabin crew
- Worldwide passenger airlines

Progression routes include:

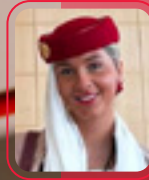
- University
- Employment
- Apprenticeship





STUDENT PROFILE

MILLIE BORRILL



"Former Frederick Gough School student, Millie completed a Level 3 Diploma in Travel and Tourism with us and is now soaring in her dream career."

After attending an Emirates Open Day, Millie applied for a role as a cabin crew member. She successfully gained employment at the leading airline, packed her bags, and now lives and works in Dubai.

"I CHOSE TO STUDY AT NORTH LINDSEY COLLEGE BECAUSE IT IS WELL KNOWN FOR ITS TRAVEL AND TOURISM COURSE AND HAD A GREAT SIMULATOR FOR PRACTICE!"

CAREERS

- Air Cabin Crew
- Hotel Manager
- Tour Manager
- Tourist Information Centre Manager
- Travel Agency Manager
- Events Manager
- Customer Services Assistant
- Sales Executive
- Conference Centre Manager
- Holiday Representative
- Hospitality Assistant/Manager
- Hotel Porter
- Tourism Officer
- Travel Journalist
- Wedding Planner
- Cruise Ship Steward and much more...

Scan QR Code for an up to date list of our courses and to **apply online!**



118 UNIFORMED SERVICES & POLICING

Did you know there are over 180,000 people employed in the UK armed forces?

CAREER OPPORTUNITIES

Army Officer

£31,000 to £48,000

Police Officer

£28,500 to £46,000

Firefighter

£28,000 to £42,000

Royal Marines Commando

£19,000 to £42,000

However, it is not just about military careers after studying uniformed services, you can also progress on to a wide variety of careers including working as boarder force, as part of the fire service, Police, in schools, fitness, personal training and much more!

In December 2023, the Office for National Statistics (ONS) estimated that 5.93 million people were employed in the UK's public sector, a number that continues to grow. This means that studying uniformed services opens a wealth of opportunities.

Throughout their time at College, our students can train in our on-site gym, as well as benefit from access to industry-relevant trips. Our Duke of Edinburgh's Award offer is also a popular choice for our uniformed services students.

We encourage our students to develop their industry, employability, and digital skills to help their CV and UCAS applications stand out from the crowd. Join us and unlock a future full of possibilities!

LMI Data from the National Careers Service
June 2024

A young man with light brown hair and blue eyes is smiling at the camera. He is wearing a bright blue safety helmet with "SPORT" and "CS" written on it. A black chin strap with three orange lights is attached to the helmet. He is wearing a green, brown, and black camouflage jacket. He is standing in front of a wooden climbing wall with several handholds. In the background, there are trees and a wooden structure, possibly a playground or sports field.

FEATURED STUDENT:
CHARLES SAXBY

120 UNIFORMED SERVICES & POLICING

LEVEL 1

AWARD/ CERTIFICATE IN SPORT AND UNIFORMED SERVICES

Course Duration: **1 Year**

Assessment: **100% Coursework & Practical Skills**

Entry Requirements: **This programme of study is designed for students who have not achieved a grade 4 at GCSE in maths and English**

Units you may study include:

- Taking part in exercise and fitness
- Planning own fitness programme
- Preparing for an interview
- Working in a team
- Participating in sport of active leisure activities
- Anatomy and physiology
- Planning a healthy diet
- Employability skills and technical skills

Progression routes include:

- Progression on to other Uniformed Services courses
- Employment
- Apprenticeship

LEVEL 2

DIPLOMA IN UNIFORMED AND PUBLIC SERVICES

Course Duration: **1 Year**

Assessment: **100% Coursework & Practical Skills**

Entry Requirements: **Grade 4 in either maths or English or Level 1 in Sport and Uniformed Services**

Units you may study include:

- Employment in uniformed services
- Physical fitness for the uniformed services
- Develop teamworking and problem solving skills
- Health and safety in the uniformed services
- Health and hygiene in the uniformed services
- Follow uniformed service routine
- Exploring equality and diversity for the uniformed services
- Participating in competitive sports
- Explore the use of telecommunications

Progression routes include:

- Progression on to Level 3 Extended Diploma In Policing
- Employment

LEVEL 3

EXTENDED DIPLOMA FOR ENTRY TO UNIFORMED SERVICES

Course Duration: **1-2 Years**

Assessment: **100% Coursework & Practical Skills**

Entry Requirements: **Minimum grade 4 maths and English**

The 2 years of study equates to three A Levels

Units you may study include:

- Preparing for a career in uniformed services
- Developing aspects of physical fitness for entry to the uniformed services
- Carrying out map reading and navigation across open country
- Outdoor and adventurous expeditions
- Telecommunications in the uniformed services
- Volunteering in the uniformed services
- Conflict management
- Crime scene investigation
- Hierarchy of the services
- Security procedures
- Collaboration between uniformed services
- War and conflict
- Understanding discipline
- Mental and physical well-being
- Skills for land based and water outdoor and adventure activities
- Employability skills

Progression routes include:

- University
- Employment - Uniformed Services
- Apprenticeship
- Progression to University Campus North Lincolnshire (UCNL)





STUDENT PROFILE



JAKE LAUGHTON

"Jake, a previous Sir John Nelthorpe student, came to us with a love of history and the military and after completing his Level 3 Extended Diploma in Uniformed Services, has been accepted into the Army. The course provided Jake with a range of opportunities to progress professionally and personally. He expressed that he enjoyed the fitness-based aspects and opportunities to travel within the UK and abroad the most.

"IF YOU LOVE FITNESS AND THE IDEA OF BEING IN THE MILITARY, OR ANY OF THE PUBLIC SERVICES, I HIGHLY RECOMMEND THIS COURSE. IT WILL TEACH YOU LIFE SKILLS THAT YOU MAY USE EVEN IF YOU DECIDE AGAINST BEING IN THE MILITARY."

CAREERS

- Aid Worker
- Army Officer
- Bodyguard
- Border Force Officer
- Chief Inspector
- Civil Enforcement Officer
- Coastguard
- Diver
- Dog Handler
- Door Supervisor
- Fingerprint Officer
- Firefighter
- Immigration Officer
- Merchant Navy Deck Officer
- Police Officer
- Prison Officer
- RAF Airman or Airwoman
- RAF Non-Commissioned Aircrew
- RAF Officer
- Road Traffic Accident Investigator
- Royal Marines Commando
- Royal Marines Officer
- Royal Navy Officer
- Royal Navy Rating
- Scenes of Crime Officer
- Search and Rescue Worker
- Security Service Personnel
- Security Manager
- Security Officer
- Soldier and much more...

Scan QR Code for an up to date list of our courses and to apply online!



122 UNIFORMED SERVICES & POLICING

LEVEL 3

EXTENDED DIPLOMA IN POLICING

Course Duration: **1-2 Years**

Assessment: **100% Coursework & Practical Skills**

Entry Requirements: **Minimum grade 4 maths and English**

The 2 years of study equates to three A Levels

Units you may study include:

- Prepare for a career in the police service
- Develop leadership skills
- Develop aspects of physical fitness
- Values and standards in the police service
- Understand conflict management and personal protection
- Understand discipline in the police service
- The development of the UK police service
- Dealing with emergency incidents
- Preparation for Higher Education
- Collaboration between the emergency services
- Emergency planning and response in the police service
- UK legal systems and the police service
- Crime scene investigation
- ICT in the police service
- Neighbourhood policing
- Understanding mental health
- Carry out map reading and navigation across open country

Progression routes include:

- University
- Employment - Police
- Apprenticeship
- Progression to University Campus North Lincolnshire (UCNL)





123

124 UNIVERSITY CAMPUS NORTH LINCOLNSHIRE (UCNL)

We pride ourselves on being passionate about our students' progression and maximising their successes.

CAREER OPPORTUNITIES

Project Manager

£29,000 to £75,000

Physiotherapist

£28,000 to £50,000

Sport and Exercise Psychologist

£20,000 to £48,000

Early Years Teacher

£30,000 to £47,000

The student experience within our learning community is enriched by over 50 subject specialist members of academic staff along with experienced administrative and support staff.

Significant capital investment in UCNL has resulted in an excellent learning environment in a spacious building. This includes a library, high quality teaching rooms, informal social learning spaces and state of the art Industry 4.0 simulation facilities. Our campus is situated on the edge of the scenic Central Park in Scunthorpe.

FEATURED STUDENT:
MAMADU BALDE



125

BUSINESS & MANAGEMENT

- FdA Management
- Chartered Manager Degree Apprenticeship - BA (Hons) Professional Practice in Leadership and Management
- BA (Hons) Applied Business Studies

ENGLISH AND HISTORY

- BA (Hons) English and History Studies

PSYCHOLOGY

- BSc (Hons) Psychology with Criminology

SOCIAL SCIENCE

- BA (Hons) Social Science

CHILDREN'S LEARNING AND DEVELOPMENT

- Level 5 Early Years Lead Practitioner Apprenticeship
- FdA Children, Learning and Development
- FdA Supporting Children and Young People's Mental Health and Well-being (DL)
- BA (Hons) Leadership and Management in Integrated Services (DL)
- BA (Hons) Early Childhood Studies Graduate Practitioner
- BA (Hons) Children, Learning and Development (Top up)
- BA (Hons) Childhood Pedagogy (Top up) (DL)

TEACHER TRAINING

- PGCE (Lifelong Learning) Pre-service
- PGCE (Lifelong Learning) In-Service
- Certificate in Education
- BA (Hons) Education Studies

SUPPORTING CHILDREN WITH SPECIAL NEEDS AND DISABILITY

- FdA Supporting Children and Young People with Special Educational Needs (DL)
- BA (Hons) Supporting Children and Young People with Special Educational Needs (Top up) (DL)
- MA Supporting Children and Young People with Special Educational Needs (DL)

ANIMAL WELFARE SCIENCE

- FdSc Animal Welfare Science
- BSc (Hons) Applied Animal Welfare Science

COMPUTING

- HNC Digital Technologies (Cyber Security) – (HTQ)
- HNC Digital Technologies (Software Development) (HTQ)

GAMES

- FDA Game Development
- Cert HE Game Development

CONSTRUCTION

- HNC Civil Engineering
- HNC Construction Management (Construction Design and Build Technician) (HTQ)
- HNC Construction Management (Construction Site Supervisor) (HTQ)
- HNC Quantity Surveying (HTQ)

ENGINEERING

- HNC Engineering (Electrical and Electronic Engineering)
- HNC Engineering (General Engineering)
- HNC Engineering (Mechanical Engineering)
- HNC Mechanical Engineering (PT)
- HND Engineering (Electrical and Electronic) (Top up) – Conversion
- HND Engineering (Mechanical) (Top up) – Conversion

BIOSCIENCES

- BSc (Hons) Education with Biological Sciences

COUNSELLING

- BA (Hons) Counselling
- BA(Hons) Integrative Counselling

HEALTH & SOCIAL

- Level 5 Healthcare Assistant Practitioner Apprenticeship
- Cert HE Health and Social Care
- FdSc Health and Social Care
- BSc (Hons) Health and Social Care (Top up)

MENTAL HEALTH AND WELLBEING

- FdSc Mental Health & Wellbeing
- BSc (Hons) Mental Health & Wellbeing (Top up)

SPORT AND EXERCISE

- FdSc Sport, Exercise and Coaching Science
- BSc (Hons) Sport, Exercise and Coaching Science (Top up)

Key:

*	Subject to validation
(DL)	Distance Learning
(Top up)	Level 6 Qualification
(HTQ)	Higher Technical Qualification



CAREER OPPORTUNITIES

- Postgraduate Study
- Family Support Worker
- Substance Misuse Worker
- Sports Analyst
- Conservationist
- Social Worker
- Radiographer
- Hotel/Restaurant Manager
- Special Educational Needs Officer
- Mechanical Engineer
- Electrical Engineer
- Software Developer
- Counsellor
- Teacher
- Civil Service
- Animal Welfare Officer
- Biomedical Scientist
- Nurse or Midwife
- Entrepreneur Site Manager
- Business Officer
- Data Analyst
- Quantity Surveyor
- and much more...



STUDENT PROFILE

CHANDEL RAILTON-CLARK

"Chandel Railton-Clark obtained a BA(Hons) in Counselling through the University Campus North Lincolnshire to improve her long-term career prospects, having being inspired by the positive benefits of counselling which she experienced first-hand.

Chandel now works at a psychotherapy practice, where she provides counselling to children and adults, while completing a master's degree.

"THE TUTORS AT UCNL ARE ENGAGING AND HELPFUL, AND THE COURSE FLEXIBILITY MEANT I WAS ABLE TO STUDY AROUND MY WORK AND FAMILY. I HAVE BEEN ENCOURAGED TO ACHIEVE MORE THAN I EVER THOUGHT I WOULD."

CAREERS

- Postgraduate Study
- Family Support Worker
- Substance Misuse Worker
- Sports Analyst
- Conservationist
- Social Worker
- Radiographer
- Hotel/Restaurant Manager
- Special Educational Needs Officer
- Mechanical Engineer
- Electrical Engineer
- Software Developer
- Counsellor
- Teacher
- Civil Service
- Animal Welfare Officer
- Biomedical Scientist
- Nurse or Midwife
- Entrepreneur Site Manager
- Business Officer
- Data Analyst
- Quantity Surveyor and much more...

Scan QR Code for an up to date list of our courses and to apply online!



EVENTS 2025/26

OPEN EVENTS - 4.30-7.00PM

TUESDAY 15TH OCTOBER 2024

TUESDAY 21ST JANUARY 2025

TUESDAY 24TH JUNE 2025

LATE APPLICANT EVENT - 4.30-7.00PM

TUESDAY 9TH SEPTEMBER 2025

APPRENTICESHIP EVENT - 4.30-7.00PM

THURSDAY 13TH FEBRUARY 2025

NORTH LINDSEY COLLEGE
KINGSWAY
SCUNTHORPE
NORTH LINCOLNSHIRE
DN17 1AJ

01724 281111

www.northlindsey.ac.uk

info@dncolleges.ac.uk



NORTHLINDSEYCOLLEGE



@NORTHLINDSEY



NORTH LINDSEY COLLEGE



@NORTHLINDSEY



NORTHLINDSEYCOLLEGE



NORTHLINDSEYCOLLEGE