

PROSPECTUS 2026-27

JOIN US!

Apply Now!



WELCOME TO NORTH LINDSEY COLLEGE



CONTENTS

PRINCIPAL'S WELCOME	4	MOTOR VEHICLE	74
REASONS TO STUDY WITH US	6	MUSIC	78
APPLICATION PROCESS	7	PERFORMING ARTS	82
ANIMAL MANAGEMENT	8	Acting, Musical Theatre, Dance	
ART & DESIGN	12	SPORT, PHYSICAL ACTIVITY & EXERCISE SCIENCE	86
BUSINESS MANAGEMENT	16	TRAVEL & TOURISM	92
CATERING & HOSPITALITY	20	UNIFORMED SERVICES & POLICING	96
CONSTRUCTION	24	APPRENTICESHIPS	100
Brickwork, Groundwork, Plastering, Joinery, Plumbing		THE DUKE OF EDINBURGH'S AWARD	104
DIGITAL TECHNOLOGIES	34	ENRICHMENT	106
EDUCATION & EARLY YEARS	40	WELLBEING & SUPPORT	107
ENGINEERING	44	WORK EXPERIENCE & INTERNATIONAL	108
Electrical Installation, Electrical Engineering, Mechanical Engineering, Fabrication and Welding		CAREERS	110
ENGLISH FOR SPEAKERS OF OTHER LANGUAGES (ESOL)	52	GCSE ENGLISH & MATHS	111
Speaking, Listening, Reading, Writing		TRAVELLING TO COLLEGE	112
FOUNDATION STUDIES	58	UNIVERSITY CAMPUS NORTH LINCOLNSHIRE	114
HAIRDRESSING & BEAUTY THERAPY	62		
Hairdressing, Beauty Therapy			
HEALTH & SOCIAL CARE	68		
Health & Social Care, Health Science			

PRINCIPAL'S WELCOME

Welcome and thank you for your interest in **North Lindsey College.**

Welcome and thank you for your interest in North Lindsey College. This new prospectus showcases our sector-leading facilities, the support available from our fabulous staff, and the wide range of opportunities, subjects, and levels we deliver.

In January 2025, Ofsted once again recognised us as a Good provider and highlighted many key strengths across the breadth of our provision. Learners at the college were seen to grow in confidence, take pride in their excellent levels of achievement and benefit from highly effective personal development.

We recognise that students will take different routes to reach their personal and professional goals and to enable this, we offer a wide range of study options, including studying on a full-time course, learning whilst working on a high-quality apprenticeship, or heading on to our amazing local higher education offer at our university campus provision. Whatever route you take, we want you to

enjoy your time with us and become an active member of our college community.

To maximise your chances of success, we believe that good attendance and punctuality are important and will be essential for you to reach your potential. This is not only important for learning on your course and to ensure the best possible grades but is also highly valuable preparation for your future working life.

You will all be aware of the importance of gaining maths and English qualifications to a good standard and we will continue to support you to achieve those qualifications if you haven't already done so.

There are many opportunities to get involved in college activities and our community and to make your voice heard. These include becoming a Student Governor, Student Rep, taking part in trips, clubs and societies, WorldSkills UK events, internal college

leagues, The Duke of Edinburgh's Awards scheme and much more.

You can expect us to provide you with great teaching and learning, as well as wider wrap around support to enable you to succeed.

We wish you all the best and look forward to seeing you around the college in the future.

John Rees
JOHN REES

CEO and Principal on behalf of the
Senior Leadership Team



REASONS TO STUDY WITH US:

3 days a week timetable

P Free Parking

Sports Teams



International Trips

Food Hall

On-site Gym



And more!...

- The Duke of Edinburgh's Award
- Hairdressing & Beauty Therapy
- Opportunity to improve GCSE maths & English
- Progression to UCNL
- Work experience
- Student support
- Further study options
- Industry experienced staff



APPLICATION PROCESS

Apply Now!



APPLY

1. Apply

You can do this online by scanning the QR code, or ask for a paper application form through your school or by dropping in to see us.

INTERVIEW

2. Interview

Once we have your application you will be invited into College for an informal interview with your tutor.

ENROL

3. Enrol

This normally takes place on GCSE results day, so expect to come into College towards the end of August to complete the application process.

In between those three steps, there are plenty of opportunities to come onto campus to meet the tutors, see our facilities and get to know us some more! Check out our Open Events on the back page.

One Subject

Most Level 3 subjects here at North Lindsey College are equivalent to three A Levels, so when you apply to study with us at this level you only need one subject.

Within that subject you will gain the UCAS points needed to progress to university, so unlike other colleges where you perhaps study three A Levels to gain the right UCAS points, here you only need one.

GCSE English & maths

If you do not have the GCSE grades to progress to a Level 3 qualification you will be able to resit your English and maths here at North Lindsey College. You will be able to combine them with a Level 2 qualification of your choice to enable you to step up to a Level 3 the following year (see page 9 for more information on re-studying your GCSE).

ANIMAL MANAGEMENT

Turn your **passion for animals** into a career.



If you're passionate about animals, there's no better place to start your career in animal care. At North Lindsey College, you'll study alongside an expert team of animal professionals, from veterinary nurses, zookeepers, Flyball competitor, kitten rescue and rehabilitator to award-winning Crufts exhibitionists.

With more than 60 species on campus including meerkats, Royal Golden Guernsey goats, snakes, and marmoset monkeys, you'll gain hands-on experience that goes far beyond the classroom. Our strong ties with local employers provide invaluable work experience opportunities, ensuring you're well-prepared for roles such as veterinary nurse, animal trainer, zookeeper, or animal rehabilitator.

Animal care isn't just about the cute and cuddly – it plays a big role in today's world, from protecting endangered species to keeping our pets healthy and happy. If you've ever dreamed of working with animals and helping the planet, this is your chance.



“One of my favourite experiences as a student at North Lindsey College was taking the goats out for walks, you'd be surprised just how much personality each of them have!”



CAMERON COOMBS

Cameron chose to study at North Lindsey College after leaving The Axholme Academy. He was particularly impressed by the College's Animal Care Unit, which offers a hands-on experience with a wide variety of species—an opportunity that really stood out to him.

Although he had always been interested in animals, Cameron had limited practical experience before attending North Lindsey College. His studies there played a key role in confirming his passion for working in the animal care sector.

Following his time at college, Cameron went on to pursue a Bachelor's degree in Zoology with Animal Management at Bangor University.

Cameron now aspires to become an aquarist, with the long-term goal of one day becoming an aquarium curator.



ANIMAL MANAGEMENT

LEVEL 1

AWARD IN LAND BASED STUDIES

Course Duration: 1 Year
Assessment: 75% Portfolio, 25% Exam
Entry Requirements: 4 GCSEs at grade 3-1 or an entry level qualification

Units you may study include:

- Safe and effective working practices
- Assisting with maintaining the health and wellbeing of animals
- Animals in the wild and in society
- Assisting with feeding and watering animals
- Practical handling and husbandry
- Animal care
- Employability skills

Progression routes include:

- Level 2
- Employment
- Apprenticeship

LEVEL 2

EXTENDED CERTIFICATE IN ANIMAL CARE

Course Duration: 1 Year
Assessment: 100% Coursework
Entry Requirements: 4 GCSEs at grade 9-3 including maths or English, or a Level 1 qualification

Units you may study include:

- Maintaining animal health and welfare
- Maintaining animal accommodation
- Undertake practical animal feeding
- Introduction to the principles and practices of animal behaviour and handling
- Employability skills
- Practical handling and husbandry

Progression routes include:

- Level 3
- Employment
- Apprenticeship

TECHNICAL LEVEL 2

CERTIFICATE IN ANIMAL CARE

Course Duration: 1 Year
Assessment: 40% Exam, 60% Coursework
Entry Requirements: 4 GCSEs or a Level 1 qualification

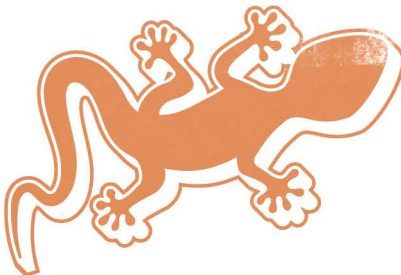
Units you may study include:

- Maintaining animal health and welfare
- Animal feeding and accommodation
- Animal behaviour and handling
- Working in the animal care industry
- Health and safety for the land-based industries
- The principles of animal biology
- Animal nursing
- Caring for zoo animals
- Employability skills
- Practical handling and husbandry
- 150 hours' industry experience

Progression routes include:

- Level 3
- Employment
- Apprenticeship

Apply Now!



CAREERS...

- Animal Technician
- Animal Welfare Assistant
- Cattery Worker
- Dog Handler
- Kennel Worker
- Pet Behaviour Counsellor
- Pet Food Sales Manager
- Pet Shop Assistant
- Zoo Keeper
- RSPCA Inspector
- Canine Trainer
- Dog Groomer
- Dog Walker
- Marine Biologist
- Veterinary Nurse
- Zoologist

AND MUCH MORE...

Example careers:	Avg £
Veterinary Nurse	£24,971
Animal Care Services Occupation	£20,834
Farm Worker	£23,255
Agricultural or Fishing Trade	£30,021

Career and salary data powered by Lightcast™
September 2025

TECHNICAL LEVEL 3

ADVANCED DIPLOMA IN ANIMAL MANAGEMENT

Course Duration: 1 Year
Assessment: 60% Coursework, 40% Exam
Entry Requirements: 5 GCSEs including English and maths or a Level 2 qualification
Equivalent to: Three A Levels

Units you may study include:

- Animal health and husbandry
- Animal behaviour and communication
- Animal feeding and nutrition
- Biological systems of animals
- Business management
- Wildlife and ecology
- Animal nursing
- Animal training
- Estate skills
- Pet store management
- Zoological collections
- Exotic animal health
- Principles of health and safety
- Employability skills
- 150 hours' industry experience

Progression routes include:

- University
- Employment
- Apprenticeship
- Progression to University Campus North Lincolnshire (UCNL)

ART & DESIGN

Serious about Art?

So are we.

If creativity is your thing, it's time to make it your future. At North Lindsey College, our Art & Design courses help you turn raw talent into real opportunities. You'll develop your own style in purpose-built workshops, guided by experienced tutors who are artists themselves.

From public exhibitions and national competitions to industry work experience and inspiring guest workshops, your creativity will come to life in and outside the studio. With access to high-spec equipment and the chance to specialise in areas like fashion, sculpture, fine art, illustration, or graphic design, you'll build a powerful portfolio and the confidence to take your next step.

The creative industries contributed £124 billion to the UK economy in 2023¹ and locally, initiatives like the development of a new cultural quarter in Scunthorpe are enhancing opportunities in arts and heritage, creating new jobs and fostering talent. By studying Art & Design, you're not just honing your creative skills - you're preparing for a future in a thriving industry with diverse career paths.

¹Source: Department for Culture, Media, and Sport (DCMS)



My tutors and peers were so welcoming, and **I settled in immediately**. I absolutely loved my time at the college. **I loved having the freedom to create, and to explore different mediums and ideas** within the safe space that the tutors created.



EMILY DOWNEY

Former Solihull College student, Emily Downey completed our Level 3 Extended Diploma in Art and Design in 2020. She has since gone on to earn a degree in Games Art at Staffordshire University and is now studying for a Master's in 3D Digital Skills.

Emily's long-term ambition is to become a character artist in the dynamic games industry. Further down the line, she hopes to start her own indie games company with some of her university peers.

She credits her time at college as a key part of her journey, saying the course - and especially her tutors - played a big role in helping her grow both creatively and personally.



ART & DESIGN

LEVEL 2

UAL AWARD IN ART & DESIGN

Course Duration: 1 Year

Assessment: 100% Coursework

Entry requirements: Students must be able to demonstrate prior knowledge and a competent level or skill at interview. Grade 2 or above in English or maths

Units you may study include:

- Introduction to materials, processes and technical skills in art and design
- Introduction to contextual research in art and design
- Final major project

Progression routes include:

- UAL Level 2 Diploma in Art & Design
- Employment
- Apprenticeship

LEVEL 2

UAL DIPLOMA IN ART & DESIGN

Course Duration: 1 Year

Assessment: 100% Coursework

Entry Requirements: 4 GCSEs graded 3 or above including maths, English and a creative subject

Units you may study include:

- Introduction to materials, processes and technical skills in art and design
- Introduction to contextual research in art and design
- Introduction to drawing skills
- Introduction to communication skills in art and design
- Solving 2D creative problems
- Solving 3D creative problems
- Solving time-based creative problems
- Developing and producing a personal project in art and design
- Subjects including painting, drawing, printmaking, 3D design, sculpture, textiles, illustration and animation

Progression routes include:

- UAL Level 3 Applied General Diploma in Art & Design
- Employment
- Apprenticeship

LEVEL 3

UAL DIPLOMA IN CREATIVE PRACTICE

Course Duration: 1 Year

Assessment: 100% Coursework

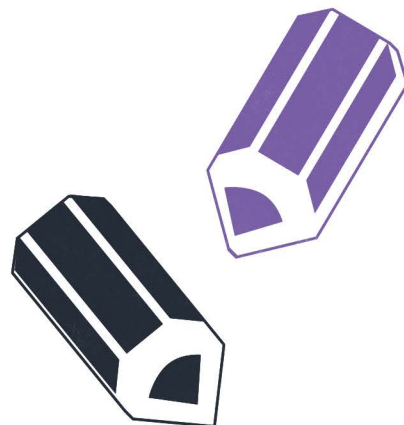
Entry Requirements: 4 GCSEs graded 4 and above including maths, English and a creative subject

Units you may study include:

- The creative process
- Developing creative practice
- Responding to a set brief

Progression routes include:

- UAL Level 3 Extended Diploma in Creative Practice
- Employment
- Apprenticeship



ual: awarding
body

CAREERS...

- **Illustrator**
- **Art Gallery Curator**
- **Costume Designer**
- **Fine Artist**
- **Fashion Retail Or Buyer**
- **Graphic Designer**
- **Teacher**
- **TV & Film Set Designer**
- **Retail Visual Merchandiser**
- **Textile Designer**
- **Art Director**
- **Architect**
- **Arts Events Co-Ordinator**
- **Ceramics Designer**
- **Exhibition Designer**
- **Product Designer**
- **Landscape Architect**
- **Special Effects**
- **Tattoo Artist**
- **Surface Designer**
- **Portrait Artist**
- **Animator**

AND MUCH MORE..

Example careers:

Graphic and Multimedia Designers	£25,016
Artist	£35,441
Arts Officer, Producer, or Director	£34,896
Manager in the Creative Industries	£43,963

Avg £

*Career and salary data powered by Lightcast™
September 2025*

LEVEL 3

UAL EXTENDED DIPLOMA IN CREATIVE PRACTICE

Course Duration: 1 Year

Assessment: 100% Coursework

Entry Requirements: Level 3 Applied General Diploma in Art & Design or equivalent qualification

Units you may study include:

- Researching a specialist industry practice
- Specialist technical skills development
- Specialist creative outcome

Progression routes include:

- University
- Employment
- Apprenticeship

BUSINESS MANAGEMENT

Learn business skills that open doors, **locally and beyond.**

Love thinking smart, solving problems, or leading the way? Business could be your thing. And trust us, it's more exciting than you might think. From launching your own brand to mastering marketing, business is everywhere.

You'll explore real-world skills that employers actually want, and get a taste of what it's like in the working world through projects, guest speakers, and external trips.

If hands-on learning is more your thing, our T Level in Business might be for you. Designed with real employers, you'll spend at least 315 hours in an industry placement, gaining experience that looks great on a CV and gives you a serious head start. Whether you want to go to university, land a top apprenticeship, or jump straight into the world of work, studying business is a smart move.



I really enjoyed my time at North Lindsey College. **The course was engaging, and the work experience helped me step straight into employment.**



Apply NOW!



SZYMONEVANS

Wanting to focus on a single course that matched his goals and passion for business, Szymon opted for a Level 3 T Level in Business Studies here at North Lindsey College.

As part of the programme, which is equivalent to three A Levels, he completed 315 hours of hands-on work experience with North Lincolnshire Council. This experience empowered Szymon to turn theory into practice in a real work setting and he was later offered a permanent role as an SMS Assistant.

Now, Szymon is building a successful career in business and is determined to keep climbing the ladder.



BUSINESS MANAGEMENT

LEVEL 1

INTRODUCTION TO BUSINESS AND TRAVEL SKILLS

Course Duration: 1 Year
Assessment: Portfolio of evidence
Entry Requirements: 4 GCSEs grades U to 1

Units you may study include:

- Customer service skills
- Digital marketing
- Supporting business meetings
- Communication skills for work
- Airline services
- Planning a trip to a visitor attraction
- The UK travel industry
- Working in travel and tourism

Progression routes include:

- Progression onto other Level 2 programmes
- Employment
- Apprenticeship



LEVEL 2

GATEWAY DIPLOMA IN BUSINESS ADMINISTRATION SUPPORT

Course Duration: 1 Year
Assessment: 100% Portfolio based
Entry Requirements: 4 GCSEs grade 2 and 3

Units you may study include:

- Understanding business organisations
- Effective communication in the workplace
- The marketing environment
- Budgeting and managing money
- Using ICT in the workplace
- Creating business documents
- Using online systems to develop customer loyalty
- Interview skills
- Career planning

Progression routes include:

- Progression on to the Level 3 Foundation Diploma in Business
- Employment
- Apprenticeship



CAREERS...

- Accountant
- Digital Marketing Officer
- Finance Adviser
- Human Resources Officer/Manager
- Insurance Broker
- Marketing Manager
- Office Administrator
- Public Relations Officer
- Recruitment Consultant
- Secretary
- Retail Manager
- Bank Manager Civil Servant
- Events Organiser
- Hotel Manager
- Logistics Co-Ordinator
- Mortgage Adviser
- Payroll Officer
- Receptionist
- Sales Manager
- Social Media Executive

AND MUCH MORE...

Example careers:	Avg £
Finance Officer	£25,894
Advertising Director	£68,504
Industrial Relations Officer	£26,993
Business Development Manager	£47,001

Career and salary data powered by Lightcast™
September 2025

T-LEVELS

THE NEXT LEVEL QUALIFICATION

T LEVEL

BUSINESS AND ADMINISTRATION

Course Duration: 1-2 Years
Assessment: 60% Exam, 40% Employer Set Project (Controlled Assessment)
Entry Requirements: 5 GCSEs grade 4 or above including English and maths. The two years of study equates to three A Levels.

Course Introduction

As a student you will be able to study a two-year programme which has been developed against industry standards to support you to gain knowledge and experience from being in a college environment and in industry. As a T Level student, you will be able to gain the technical knowledge and practical skills valued by the industry.

We are able to offer core skills such as business and commercial awareness, project management, and communication skills. In your second year you shall undertake an occupational specialism which could be either business improvement, business support, or leadership and management.

Progression routes include:

- University
- Employment
- Apprenticeship
- Progression to University Campus North Lincolnshire (UCNL)

CATERING & HOSPITALITY

Learn from
professional chefs
in real kitchens.



Learn real skills in pro-level kitchens and get ready for a future in food. Whether you want to cook locally or take your talents worldwide, food is a language everyone understands - so dream big.

Don't worry - no experience is needed to begin your journey, just a passion for food. From learning the basics to mastering advanced techniques, we'll support you every step of the way. With opportunities for international work experience in places like France and across Europe, you won't just learn to cook, you'll learn how to be a leader in the world of catering and hospitality.

There's more to a career in food than the kitchen. This course could lead you into restaurant management, food science, running your own business, or even roles in retail.

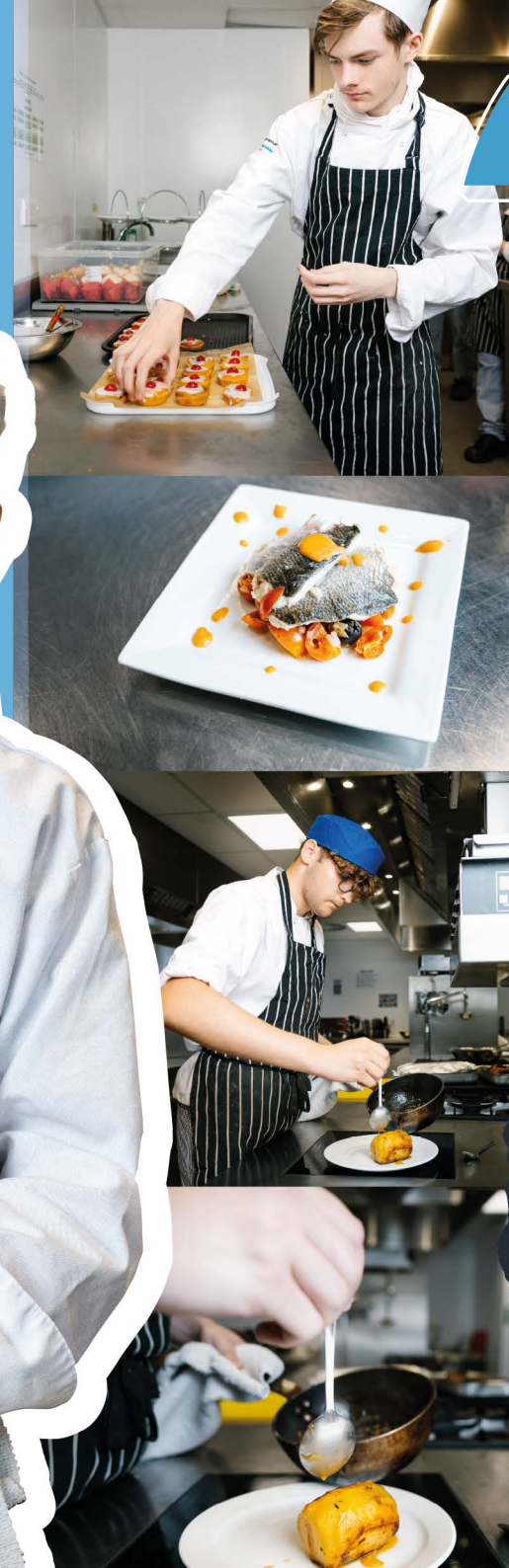


I just **enjoy learning** and would say I enjoyed going back to basics the most. Working in kitchens is very fast-paced and everything feels rushed. Here, you get to slow it down and really **perfect the basics of cooking**, like learning the processes and science behind making a good stock, for example. Being in a room with other learners was great because you get to work and **learn together**. I settled into college life really easily and **felt very welcomed**.

GEORGE WILLIAMS

Former Winterton Community Academy student, George completed his Level 2 Diploma in Professional Cookery with us and is now completing an Apprenticeship at local eatery, Restaurant DOM.

With a passion for food that has been with him since childhood, George has always known he wanted to work in the industry and one day hopes to head up an establishment of his own.



CATERING & HOSPITALITY



LEVEL 1

CERTIFICATE IN CULINARY SKILLS

Course Duration: 1 Year

Assessment: 100% Coursework

Entry Requirements: No formal entry requirements

Units you may study include:

- Introduction to the catering and hospitality industry
- Health and safety awareness for catering and hospitality
- Introduction to kitchen equipment
- Introduction to personal workplace skills
- Preparing and cooking food by boiling, poaching, and steaming
- Preparing and cooking food by stewing and braising
- Preparing and cooking food by baking, roasting, and grilling
- Preparing and cooking food by deep and shallow frying

Progression routes include:

- Progress on to Level 2 Diploma in Professional Cookery
- Employment
- Apprenticeship

LEVEL 2

DIPLOMA IN CULINARY SKILLS

Course Duration: 1 Year

Assessment: 50% Coursework, 50% Exam

Entry Requirements: At least 4 GCSEs including maths or English at grade 3-4

Units you may study include:

- Investigating the hospitality and catering industry
- Food safety in catering
- Healthier foods and special diets
- Costs and menu planning
- Applying workplace skills
- Preparing and cooking stocks, soups, and sauces
- Preparation and cooking of fruit and vegetables
- Preparation and cooking of meat, offal, poultry, fish and shellfish
- Preparation and cooking of rice pasta, grains and egg dishes
- Producing hot and cold desserts, puddings, biscuit, cake, and sponge products
- Preparation and cooking of fermented dough

Progression routes include:

- Progress on to Level 3 Advanced Diploma in Professional Cookery
- Employment
- Apprenticeship

LEVEL 2

DIPLOMA IN PROFESSIONAL COOKERY

Course Duration: 1 Year

Assessment: 50% Coursework, 50% Exam

Entry Requirements: At least 4 GCSEs including maths or English at grade 9-4

Units you may study include:

- Investigating the hospitality and catering industry
- Food safety in catering
- Healthier foods and special diets
- Costs and menu planning
- Applying workplace skills
- Preparing and cooking stocks, soups, and sauces
- Preparation and cooking of fruit and vegetables
- Preparation and cooking of meat, offal, poultry, fish and shellfish
- Preparation and cooking of rice pasta, grains and egg dishes
- Producing hot and cold desserts, puddings, biscuit, cake, and sponge products
- Preparation and cooking of fermented dough

Progression routes include:

- Progress on to Level 3 Advanced Diploma in Professional Cookery
- Employment
- Apprenticeship

CAREERS...

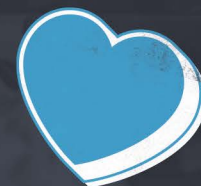
- Catering Manager
- Chef de Partie
- Food Manufacturing Development
- Food Service
- Food Retail Section Supervisor
- Greengrocer
- Kitchen Porter
- Restaurant Manager
- Wedding and Events Planner
- Baker/Cake Decorator
- College Lecturer
- Chef
- Public House Manager
- Head Chef Hotel Manager
- Private Chef
- Food Stylist

AND MUCH MORE...

Example careers:

Chef	Avg £
Butcher	£25,908
Bar and Catering Supervisor	£27,177
Bakers and Flour Confectioner	£22,656
	£19,654

Career and salary data powered by Lightcast™
September 2025



LEVEL 3

ADVANCED DIPLOMA IN PROFESSIONAL COOKERY

Course Duration: 1-2 Years

Assessment: 50% Theory, 50% Practical Assessments

Entry Requirements: Level 2 in Professional Cookery
(Two years) Equivalent to: Three A Levels

Units you may study include:

- Supervisory food safety
- Supervisory skills in hospitality
- Exploring gastronomy
- Advanced skills in vegetables and vegetarian dishes
- Advanced skills and techniques in producing meat dishes
- Advanced skills and techniques in producing poultry and game dishes
- Advanced skills and techniques in producing dough and batter products
- Petit fours products
- Produce paste products
- Produce hot, cold, and frozen desserts
- Produce biscuits, cakes and sponges

Progression routes include:

- University
- Employment
- Apprenticeship



Apply NOW!

CONSTRUCTION

Start a trade.

Secure your future.

The construction industry needs skilled workers now more than ever with over 255,000 jobs opening nationwide in the coming years! At North Lindsey College, you can train in brickwork, plumbing, joinery and carpentry, plastering, and construction in the built environment, all in modern workshops tailored to each trade and designed to mirror real job sites.

With our strong links to local employers, you'll gain valuable work experience and the chance to start an apprenticeship, putting you on a direct path to a rewarding career in construction.

Our specialised T Level in Surveying and Design for Construction – a qualification equivalent to 3 A Levels – offers the perfect mix of practical hands-on work and classroom learning: ideal for anyone wanting a balanced approach to kick-start a career in the built environment.

¹Source: The Construction Industry Training Board (CITB)'s annual industry forecast



CAREERS...

- Architect
- Building Control Officer
- Building Services Engineer
- Building Site Inspector
- Construction Manager
- Construction Contracts Manager
- Heating & Ventilation Engineer
- Kitchen & Bathroom Fitter
- Land Surveyor
- Quantity Surveyor
- Tiler
- Town Planner
- Bricklayer Plasterer
- Civil Engineer
- Plumber
- Carpenter/Joiner
- Facilities Caretaker
- Shopfitter
- Painter & Decorator
- Structural Engineer

AND MUCH MORE...

Example careers:	Avg £
Bricklayer	£33,125
Plasterer	£31,234
Plumber or Heating Installer	£36,523
Carpenter or Joiner	£31,333

Career and salary data powered by
Lightcast™ September 2025



I'm more of a hands-on learner and my course involved a lot of practical work, which was good. The tutors in Plumbing are great and really helpful. It was an opportunity presented by North Lindsey that **allowed me to apply for my apprenticeship**, so my course definitely helped me with my progression. **I learnt a lot of skills needed to be successful in industry.**

HAYDEN LINGARD-ANDREW

Hayden a former student of Outwood Academy Brumby, joined us to study a Level 2 Diploma in Plumbing, a hands-on course designed to open doors into the fast-growing construction industry.

Halfway through his course, a unique opportunity came up. Two local companies, Matthews & Tannert and Ongo Recruitment, welcomed a number of top-performing construction students to compete against each other and several external candidates for a chance to earn a real apprenticeship – a big step toward a full-time career and Hayden took the challenge head-on.

Hayden stood out and impressed the team at Matthews & Tannert and as a result, he was offered an apprenticeship with them which he's now proudly completing.



BRICKWORK

Not sure which trade to choose?
Check out our Multi-Skills course:

ENTRY 3

CERTIFICATE IN MULTI-SKILLS CONSTRUCTION TRADES

Course Duration: 1 Year
Assessment: 80% Practical, 20% Theory
Entry Requirements: No formal entry requirements

Units you may study include:

- Health and safety in construction
- Introduction to the construction industry
- A choice of practical tasks including bricklaying, carpentry and joinery, tiling, plastering and plumbing

Progression routes include:

- Level 1 in one of the trades



LEVEL 1

CERTIFICATE IN BRICKWORK

Course Duration: 1 Year
Assessment: 75% Practical, 25% Theory
Entry Requirements: GCSE maths and English grades 2-3

Units you may study include:

- Introduction to health and safety in construction
- Introduction to the construction industry
- Constructing cavity walls in brickwork and block work
- Constructing one brick walling
- Constructing block walling
- Constructing half brick return corners

Progression routes include:

- Progression on to the Level 1 Diploma in Brickwork
- Apprenticeship
- Employment

LEVEL 1

DIPLOMA IN BRICKWORK

Course Duration: 1 Year
Assessment: 60% Practical, 40% Theory
Entry Requirements: GCSE maths and English grades 3-4

Units you may study include:

- Principles of building construction, information and communication
- Contribute to setting out and building of masonry structures up to damp proof course
- Carrying out block laying activities
- Carrying out bricklaying activities
- Carrying out cavity walling activities
- Health, safety, and welfare in construction

Progression routes include:

- Progression on to the Level 2 Diploma in Brickwork
- Apprenticeship
- Employment



LEVEL 2

DIPLOMA IN BRICKWORK

Course Duration: 1 Year
Assessment: 60% Practical, 40% Theory
Entry Requirements: Progression from Level 1 only, no direct entry

Units you may study include:

- Health, safety, and welfare in construction
- Principles of building construction, information, and communication
- Building solid walling, isolated and attached piers
- Interpreting working drawings to set out masonry structures
- Construct cavity walling forming masonry structures

Progression routes include:

- Apprenticeship
- Employment

Apply NOW!



PLASTERING

Not sure which trade to choose?
Check out our Multi-Skills course: Page 26

LEVEL 1

CERTIFICATE IN PLASTERING

Course Duration: 1 Year

Assessment: 75% Practical, 25% Theory

Entry Requirements: GCSE maths and English grades 2-3

Units you may study include:

- Introduction to health and safety in construction
- Introduction to the construction industry
- Preparing background surfaces and applying finishing coats
- Mixing materials and applying floating
- Preparing background surfaces and applying render coats

Progression routes include:

- Progression on to the Level 1 Diploma in Plastering
- Apprenticeship
- Employment

LEVEL 1

DIPLOMA IN PLASTERING

Assessment: 60% Practical, 40% Theory

Entry Requirements: GCSE maths and English grades 3-4

Units you may study include:

- Principles of building construction information and communication
- Prepare background surfaces and mix plaster materials
- Applying scratch coats to internal backgrounds
- Fixing sheet materials
- Applying floating coats to walls
- Applying setting coats to walls
- Health safety, and welfare in construction

Progression routes include:

- Progression on to the Level 2 Diploma in Plastering
- Apprenticeship
- Employment

LEVEL 2

DIPLOMA IN PLASTERING

Course Duration: 1 Year

Assessment: 60% Practical, 40% Theory

Entry Requirements: Progression from Level 1 only, no direct entry

Units you may study include:

- Health, safety, and welfare in construction
- Principles of building construction information and communication
- Applying plaster materials to interiors
- Fix dry lining and plasterboards to interiors
- Laying sand cement screeds
- Applying plaster materials to external backgrounds

Progression routes include:

- Apprenticeship
- Employment

Apply NOW!



CARPENTRY & JOINERY

Not sure which trade to choose?
Check out our Multi-Skills course: Page 26

LEVEL 1

CERTIFICATE IN CARPENTRY & JOINERY

Course Duration: 1 Year

Assessment: 75% Practical, 25% Theory

Entry Requirements: GCSE maths and English grades 2-3

Units you may study include:

- Introduction to health and safety in construction
- Constructing halving joints
- Constructing housing joints
- Constructing through mortice and tenon joints
- Constructing angled halving joints
- Constructing bridle joints
- Constructing haunched mortice and tenon joints
- Constructing stub mortice and tenon joints
- Fixing architraves and skirtings
- Constructing and fixing hatch linings
- Fitting locks and latches

Progression routes include:

- Progression on to the Level 1 Diploma in Joinery
- Apprenticeship
- Employment

LEVEL 1

DIPLOMA IN CARPENTRY & JOINERY

Course Duration: 1 Year

Assessment: 60% Practical, 40% Theory

Entry Requirements: GCSE maths and English grades 3-4

Units you may study include:

- Principles of building construction, information and communication
- Maintain and use carpentry and joinery hand tools
- Prepare and use carpentry and joinery portable power tools
- Produce woodworking joints
- Health, safety, and welfare in construction

Progression routes include:

- Progression on to the Level 2 Diploma in Joinery
- Apprenticeship
- Employment



Apply
NOW!



LEVEL 2

DIPLOMA IN CARPENTRY & JOINERY

Course Duration: 1 Year

Assessment: 60% Practical, 40% Theory

Entry Requirements: Progression from Level 1 only, no direct entry

Units you may study include:

- Health, safety, and welfare in construction
- Principles of building construction, information and communication
- Carry out first fix flooring and roofing
- Carry out first fix frames, partitions, and stairs
- Carry out second fixing operations
- Carry out carpentry maintenance
- Set up and operate a circular saw

Progression routes include:

- Apprenticeship
- Employment



T-LEVELS

THE NEXT LEVEL QUALIFICATION

T LEVEL

SURVEYING & DESIGN FOR CONSTRUCTION AND THE BUILT ENVIRONMENT

Course Duration: 2 Years

Assessment: Three assessments which include - science and building technology, construction industry and sustainability and an employer set project

Entry Requirements: GCSE maths and English, grade 5 as a minimum

Units you may study include:

- Health and safety
- Science
- Measurement
- Building technology
- Information and data
- Digital technology
- Construction mathematical techniques
- Design
- Construction and the built environment industry
- Sustainability
- Relationship management
- Commercial business
- Project management
- Law

Year 2

- Occupational Specialist in Surveying (or Project Management for 2026/27 starts)
- Employer set project, Occupational Specialism

Mandatory 315 hours work placement over the 2 years

Progression routes include:

- University
- Apprenticeship
- Employment

PLUMBING

Not sure which trade to choose?

Check out our Multi-Skills course: Page 26

LEVEL 1

CERTIFICATE IN PLUMBING

Course Duration: 1 Year

Assessment: 75% Practical, 25% Theory

Entry Requirements: GCSE maths and English grades 2-3

Units you may study include:

- Health and safety
- Intro to construction industry
- Connecting pipes and fittings to appliances (working with copper, plastic barrier pipe and waste pipe)
- Installing rainwater goods
- Working with low carbon steel pipe and fittings

Progression routes include:

- Progression on to the Level 1 BPEC Diploma in Plumbing
- Apprenticeship
- Employment

LEVEL 1

BPEC DIPLOMA IN PLUMBING

Course Duration: 1 Year

Assessment: 60% Practical, 40% Theory

Entry Requirements: GCSE maths and English at minimum grade 4

Units you may study include:

- Health and safety - Level 2
- Communication - Level 2
- Environmental awareness - Level 2
- Scientific principles
- Plumbing systems
- Copper pipework
- Plastic pipework
- Low carbon steel pipework
- Clipping and drilling

Progression routes include:

- Progression on to the Level 2 Diploma in BPEC Plumbing
- Apprenticeship
- Employment

LEVEL 2

BPEC DIPLOMA IN PLUMBING

Course Duration: 2 Years

Assessment: 60% Practical, 40% Theory

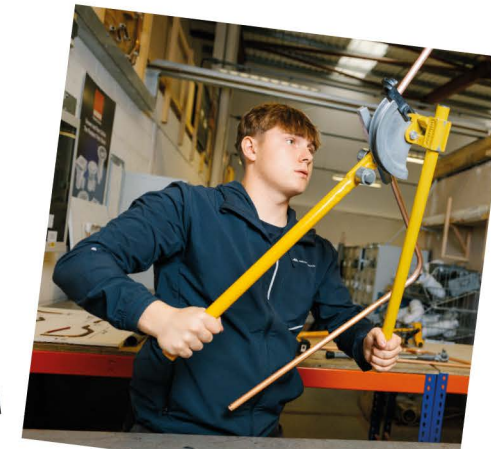
Entry Requirements: Progression from Level 1 only, no direct entry

Units you may study include:

- Health and safety
- Communication
- Environmental awareness
- Scientific principles
- Site preparation
- Cold water
- Hot water
- Central heating
- Drainage and sanitation
- Rainwater systems

Progression routes include:

- Apprenticeship
- Employment



DIGITAL TECHNOLOGIES

Turn your screen time
into skills.

The creative and digital technology industry is booming, locally and across the globe. Whether you're into gaming, videography, animation, VR, coding, or digital marketing, this is your chance to build real skills for a fast-paced, future-focused career. Learn from industry pros and gain experience that's 100% relevant.

North Lincolnshire is rapidly emerging as a hub for digital innovation, with significant investments in ultrafast broadband and 5G networks enhancing connectivity across the region. This digital transformation supports a growing economy, attracting tech startups and fostering advancements in areas like gaming, virtual reality, and IT.

Our students have gone on to work with names like Rockstar Games and Cartoon Network, started their own studios, or continued to top universities like Ravensbourne. Whatever your next step - university, your own business, or an apprenticeship - this is where your digital journey begins.



“

I always knew what I wanted to do with my career, and **North Lindsey equipped me with everything I needed to achieve my goals.** I absolutely loved my time at college. The adult-oriented approach to learning and the opportunities I had there **were incredible.** I would highly recommend anyone to consider university—it can open so many doors.

OLIVER THOMPSON

After studying at Melior Community Academy, Oliver chose to study at North Lindsey College because it was the only institution that offered the specific course he was passionate about, allowing him to focus on his desired area of study. His interest in cyber security was sparked by a guest speaker who visited his class, inspiring him to pursue this career path.

Reflecting on his time at North Lindsey, Oliver describes it as some of the best years of his life. He felt that he benefitted from the supportive and structured learning environment. His time at college was further enriched by unique opportunities, such as gaining invaluable work experience in the IT department at the House of Commons and serving as Chairman of the Student Council.

After completing his course at North Lindsey College, Oliver went on to study at De Montfort University to study Cyber Security and now enjoys a successful career in this field.



DIGITAL TECHNOLOGIES

LEVEL 1

EXTENDED CERTIFICATE IN DIGITAL SKILLS

Course Duration: 1 Year
Assessment: 100% Coursework
Entry Requirements: At least 4 GCSE grades 3-1

Units you may study include:

- Website design
- Photo editing
- Video production
- Animation
- Employability skills

Progression routes include:

- Apprenticeship
- Employment
- Progress on to a Level 2 course

LEVEL 2

EXTENDED CERTIFICATE IN CREATIVE MEDIA & PHOTOGRAPHY

Course Duration: 1 Year
Assessment: 100% Coursework
Entry Requirements: 4 GCSEs at grade 3 or above including maths or English

Units you may study include:

- Photography
- Web design
- Games design
- Editing techniques
- Interactive media
- Content creation
- Employability skills
- Animation
- Video production
- Careers progression

Progression routes include:

- Apprenticeship
- Employment
- Progress on to Level 3 Diploma in Creative Media Production & Technology

LEVEL 2

EXTENDED CERTIFICATE IN COMPUTING & GAMES DESIGN

Course Duration: 1 Year
Assessment: 100% Coursework
Entry Requirements: 4 GCSEs at grade 3 or above including English or maths

Units you may study include:

- Cyber security
- Networking
- Programming
- Games design and development
- Careers progression
- Database software
- Digital project
- Web design
- Employability skills

Progression routes include:

- Apprenticeship
- Employment
- Progress on to Level 3 Certificate in Web Design

CAREERS...

- Computer Games Tester
- Cyber Intelligence Officer
- Drone Pilot
- IT Project Manager
- IT Support Technician
- Solutions Architect
- Web Designer
- Photographer
- Teacher (Primary or Secondary)
- Video Editor
- Digital Marketer
- E-Commerce
- Security Software Developer
- IT Service Engineer
- Content Creator
- Network Engineer
- Vlogger
- Graphic Designer
- TV/Film Camera Operator

AND MUCH MORE...

Example careers:	Avg £
Cyber Security Professionals	£42,117
IT Manager	£50,553
Web Design Professional	£31,352
Photographer or Audio-visual	£27,506

Career and salary data powered by Lightcast™
September 2025

LEVEL 3

CERTIFICATE IN WEB DESIGN

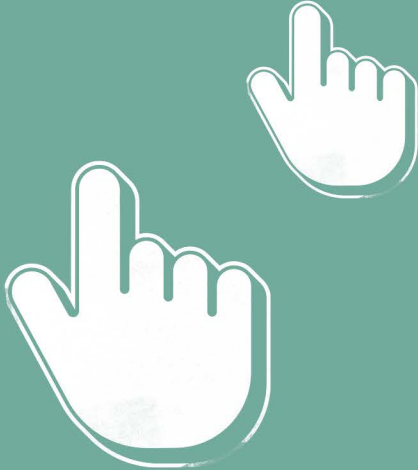
Duration: 1 Year
Assessment: 100% Coursework
Entry Requirements: 5 GCSEs at grade 9-4 including maths and English, and ideally a qualification in IT or computing

Units you may study include:

- Understanding the web and web design
- Hypertext Markup Language (HTML)
- Cascading Style Sheets (CSS)
- JavaScript
- Fundamentals of web images

Progression routes include:

- University
- Employment
- Apprenticeship
- Progression to University Campus North Lincolnshire (UCNL)





LEVEL 3

DIPLOMA IN CREATIVE MEDIA PRODUCTION & TECHNOLOGY

Course Duration: 1 Year

Assessment: 100% Coursework

Entry Requirements: 5 GCSEs grade 9-4 including English, maths and ideally a Level 2 qualification in art, media or IT

Units you may study include:

- Explore creative media production skills
- Graphic design
- Photography and digital imaging techniques
- Film, video and audio editing
- Digital illustration
- Video production
- Content creation
- Podcasting
- Motion graphics
- Visual effects
- Final major project

Progression routes include:

- University
- Employment
- Apprenticeship
- Progression to Level 3 Extended Creative Media Production & Technology



LEVEL 3

EXTENDED DIPLOMA IN CREATIVE MEDIA PRODUCTION & TECHNOLOGY

Course Duration: 2 Years

Assessment: 100% Coursework

Entry Requirements: Level 3 Diploma in Creative Media Production & Technology

Units you may study include:

- Refine and specialise creative media production skills
- Video production
- Motion graphics
- Graphic design
- Photography
- Content creation

Progression routes include:

- University
- Employment
- Apprenticeship
- Progression to University Campus North Lincolnshire (UCNL)



DIGITAL TECHNOLOGIES

T-LEVELS

THE NEXT LEVEL QUALIFICATION

T LEVEL

DIGITAL SOFTWARE DEVELOPMENT

Course Duration: 2 Years

Assessment: Year 1 - 34% assessed through employer set project and 66% through core exams

Assessment: Year 2 - 100% assessed through externally assessed project

Entry Requirements: At least 5 GCSEs at grade 4 or above with maths and English at grade 5. Ideally IT or computer science at grade 4 or above.

Units you may study include:

- Learning to code in Python, PHP, and SQL
- Website building in HTML, CSS, and JavaScript
- Handling data, digital environments, and cyber security
- SEO
- Artificial Intelligence
- A minimum 45-day industry placement
- (Year 2) Occupational Specialism Project - You will plan, build, and test a real web-based software solution using at least two programming languages

Progression routes include:

- University
- Employment
- Apprenticeship
- Progression to University Campus North Lincolnshire (UCNL)



Apply NOW!



EDUCATION & EARLY YEARS

Learn, care, inspire.

A career with kids begins here.

At North Lindsey College, our education and early years programmes prepare you for a rewarding career in nurseries, schools, and early years settings. With support from experienced tutors and access to hands-on placements, you'll build the skills and confidence you need to stand out in the childcare sector - and with excellent progression rates into employment, your future in early years starts here.

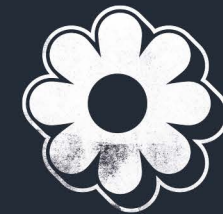
From September 2025, working parents of children over nine months old are entitled to 30 hours of funded childcare per week, increasing demand for qualified early years professionals. This expansion will create approximately 85,000 additional childcare places across England, with around 40,000 more staff needed to support this growth.¹

¹Source: Department for Education



“

My time at college was really **positive**—the course helped me get to where I wanted to be and introduced me to so many new people. If you're considering a career in education and early years, **I'd definitely recommend coming here**. There are so many great opportunities to **grow and progress**.



KATIEJEANS

After completing her studies at Frederick Gough School, Katie chose to continue her education at North Lindsey College, drawn by the wide range of courses and valuable work experience opportunities available.

She enrolled in the Foundation T Level in Education and Childcare, gaining hands-on experience at Little Goslings Day Nursery. Her dedication and enthusiasm led to an 18-month apprenticeship offer from the nursery.



EDUCATION & EARLY YEARS

LEVEL 1

CERTIFICATE CARING FOR CHILDREN

Course Duration: 1 Year
Assessment: 100% coursework
Entry Requirements: Grade 1 in English or maths. If no GCSE grades, diagnostic test will be carried out to assess suitability

- Units you may study include:**
- Growth and development of young children
 - Finding out about forest schools
 - Understanding learning and development of young children
 - Musical activities for young children

- Progression routes include:**
- Progress on to Level 2 Certificate Introducing Caring for Children and Young People
 - Employment
 - Apprenticeship

LEVEL 2

CERTIFICATE INTRODUCING CARING FOR CHILDREN & YOUNG PEOPLE

Course Duration: 1 Year
Assessment: 100% coursework
Entry Requirements: Grade 2-3 in GCSE English and maths

- Units you may study include:**
- Safeguarding the welfare of children and young people
 - The value of play to children and young people
 - Accident prevention and fire safety
 - Caring for young children in a babysitting environment
 - Craft activities with young children
 - Using food and nutrition information to plan a healthy diet

- Progression routes include:**
- Progress on to the T Level Transition Programme – Education & Early Years
 - Employment
 - Apprenticeship

T LEVEL

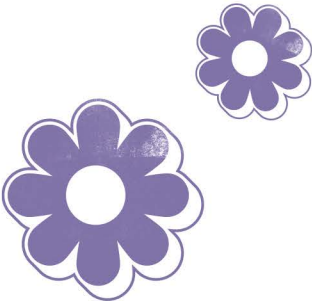
FOUNDATION YEAR EDUCATION & EARLY YEARS

Course Duration: 1 Year
Assessment: 100% coursework including development of presentation skills
Placement: 250 hours work placement in a relevant setting
Entry Requirements: Grade 4 or above in GCSE English or maths. Grade 3 in any other subject

- Units you may study include:**
- Roles and responsibilities of the Early Years Practitioner
 - Health and safety of babies and young people
 - Equality, diversity, and inclusive practice
 - Promote play in an early years setting
 - Support babies and young children to be physically active
 - Support the needs of babies and young children with special educational needs

- Progression routes include:**
- Progress on to the T Level – Education & Early Years (Early Years Educator or Assisting Teaching Pathways)
 - Employment
 - Apprenticeship

Apply NOW!



SHINE

CAREERS...

- Primary School Teacher
- Residential Support Worker
- Nursery Worker
- Children's Nurse
- Childminder
- Nurse Play Worker
- Children's Care Worker
- Specialist Healthcare Assistant
- Children's Resort Representative
- Nanny
- Child Protection Officer
- Family Support Worker
- Nursery Manager
- Teaching Assistant

AND MUCH MORE...

Example careers:	Avg £
Child or Early Years Officer	£26,035
Teaching Assistant	£17,431
Youth & Community Worker	£27,801
Nanny and Au Pair	£23,721

Career and salary data powered by Lightcast™
September 2025



T-LEVELS

THE NEXT LEVEL QUALIFICATION

T LEVEL

EDUCATION & EARLY YEARS (EARLY YEARS EDUCATOR OR ASSISTING TEACHING PATHWAYS)

Course Duration: 2 Years
Assessment: Two written examinations, employer set project, work placement assessment
Placement: 750 hours work placement in a relevant setting (across two years)
Entry requirements: Grade 4 or above in GCSE English and maths

- Units you may study include:**
- Safeguarding, health and safety, and wellbeing
 - Parents, families and carers
 - Reflective practice
 - Equality diversity
 - Child development
 - Special educational needs and disability (SEND)
 - English as an additional language
 - Supporting education
 - Working with others

- Progression routes include:**
- University
 - Employment
 - Higher level apprenticeship
 - Progression to University Campus North Lincolnshire (UCNL)

ENGINEERING

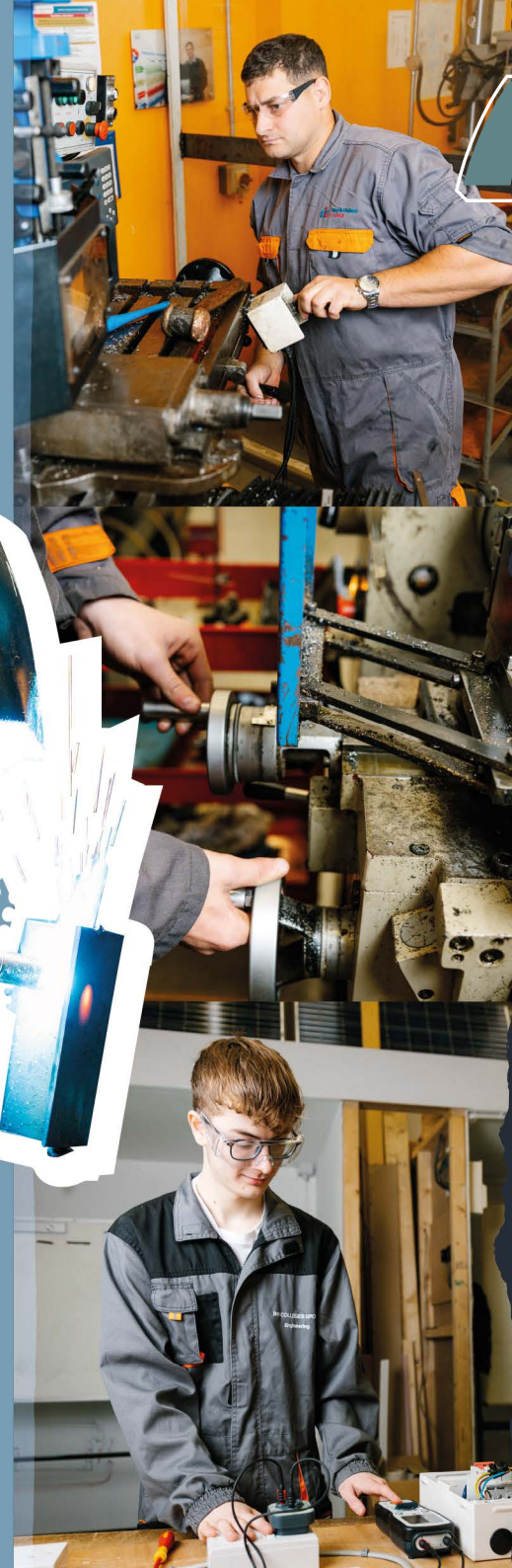
Find your future in **Engineering.**

Thinking about engineering but not sure where you'd fit in? That's exactly what we're here for. At North Lindsey College, we offer students a range of paths within the exciting world of engineering, from robotics and CAD to wind turbines and CNC machinery.

Inside our industry-standard Engineering Technology Centre, you'll find everything from a motor vehicle garage to welding bays and hands-on workshops, all set up with the tools to help you learn, experiment, and build confidence in your skills.

With skilled tutors and strong employer links, you'll be set for university, apprenticeships, or going straight into work in one of the UK's most in-demand and rewarding industries.

**Apply
Now!**



One of the biggest highlights of studying at North Lindsey College was the course structure—it gave me the flexibility to keep my part-time job while learning. **I really enjoyed both the practical and theory sessions, and the course has opened so many doors for my future.**

DARCYSEARLE

Darcy first discovered North Lindsey College while attending an open day as a student at Healing School. She was immediately impressed—not just by the wide range of courses on offer, but also by the college's organisation and welcoming atmosphere. Although the college was 30 miles from home, excellent transport links made the commute manageable. Despite not knowing anyone at first, Darcy quickly formed lasting friendships.

With a long-standing passion for engineering, Darcy was especially drawn to electrical engineering. She also had a strong desire to travel and learn new skills, making the course at North Lindsey the perfect fit to kick-start her career.

Determined to champion women in engineering, Darcy is now proud to have secured an apprenticeship as an offshore wind turbine technician, with ambitions to become a valued member of the Orsted team.



ELECTRICAL INSTALLATION

LEVEL 1

DIPLOMA IN ELECTRICAL INSTALLATION

Course Duration: 1 Year
Assessment: 100% Coursework
Entry Requirements: GCSE grade 3 minimum in English and maths

Topics you will study include:

- Health and safety
- Electrical principles
- Circuit design building electrical circuits
- Electrical principles

Progression routes include:

- Level 2
- Employment
- Apprenticeship

LEVEL 2

DIPLOMA IN ELECTRICAL INSTALLATION

Course Duration: 1 Year
Assessment: 60% Exam, 40% Practical
Entry Requirements: Grades 4 in English and maths

Topics you will study include:

- Domesticated electrical circuits
- Maths and English
- Practical based electrical projects
- Tray work and trunking

Progression routes include:

- Level 3 or T Level
- Employment
- Apprenticeship

Check out our **Engineering & Motor Vehicle Multi-Skill** course:

LEVEL 1

ENGINEERING TECHNOLOGIES (MULTI-SKILL)

Course Duration: 1 Year
Assessment: 100% Coursework
Entry Requirements: GCSE Grade 0-3 in English and maths.

Topics you will study include:

- Introduction to working in engineering
- Introduction to motor vehicle maintenance
- Introduction to mechanical and electrical maintenance
- Introduction to manual metal arc welding
- Introduction to electrical installation
- Introduction to basic maths and science used in engineering

Progression routes include:

- Level 2
- Employment
- Apprenticeship



CAREERS...

- Aerospace Engineer/Technician
- CAD Technician
- Machinist
- Craft Machinist/Lathe Technician
- Electrical Installer – EV Charging
- Electricity Distribution Engineer
- Mechanical Engineer
- Marine Engineering Technician
- Merchant Navy Engineer
- Offshore Drilling Worker
- Rail Engineering Technician
- Smart Meter Installer
- Electrician
- Design & Development Engineer
- Engineering Maintenance Fitter
- Fabricator & Welder
- Plant Fitter
- Electrical Engineer
- Pipe Fitter/Welder
- Telecoms Engineer
- Wind Turbine Technician

AND MUCH MORE...

Example careers:

Electrical Engineer	£54,501
Mechanical Engineer	£43,692
Welding Trades	£37,665
Sheet Metal Worker	£34,183

Avg £

Career and salary data powered by Lightcast™
 September 2025

LEVEL 3

ADVANCED TECHNICAL CERTIFICATE IN ELECTRICAL INSTALLATION

Course Duration: 1 Year
Assessment: 60% Exam, 40% Practical
Entry Requirements: Grades 5 in English and maths

Topics you will study include:

- Inspection and testing
- Principals of inspection and testing
- Electrical design
- Electrical science

Progression routes include:

- University
- Employment
- Apprenticeship
- Progression to University Campus North Lincolnshire (UCNL)





FABRICATION & WELDING

LEVEL 1

CERTIFICATE IN FABRICATION & WELDING

Course Duration: 1 Year

Assessment: 90% Practical, 10% Exam

Entry Requirements: GCSE Grade 3 in English and maths

Topics you will study include:

- MIG
- TIG
- MMA

Progression routes include:

- Level 2
- Employment
- Apprenticeship

LEVEL 2

CERTIFICATE IN FABRICATION & WELDING

Course Duration: 1 Year

Assessment: 80% Practical, 20% Exam

Entry Requirements: GCSE Grade 4 in English and maths

Topics you will study include:

- Welding skills - MMA, TIG and MIG
- Health and safety
- Fabrication and welding principles

Progression routes include:

- Level 3 or T Level
- Employment
- Apprenticeship

LEVEL 3

DIPLOMA IN ENGINEERING TECHNOLOGIES - FABRICATION & WELDING

Course Duration: 1 Year

Assessment: Exam and Practical

Entry Requirements: GCSE Grades 4 or 5 in English and maths

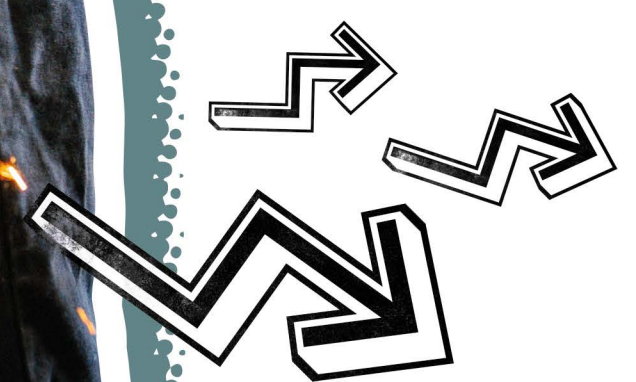
Units you may study include:

- Engineering environment health and safety
- Fabrication and welding principles
- MMA welding techniques
- MIG welding techniques
- CAD
- Plating and fabrication
- TIG Welding
- 30 hours' work experience

Progression routes include:

- University
- Employment
- Apprenticeship
- Progression to University Campus North Lincolnshire (UCNL)

Apply NOW!





MECHANICAL & ELECTRICAL

LEVEL 1

CERTIFICATE IN PERFORMING ENGINEERING OPERATIONS

Course Duration: 1 Year
Assessment: 100% Coursework
Entry Requirements: GCSE grades in English and maths

Topics you will study include:

- Health and safety
- Hand fitting tools and techniques
- Assembling mechanical components
- Electronic circuits

Progression routes include:

- Level 2
- Employment
- Apprenticeship

LEVEL 2

DIPLOMA IN PERFORMING ENGINEERING OPERATIONS

Course Duration: 1 Year
Assessment: 100% Coursework
Entry Requirements: GCSE Grade 4 in English and maths

Topics you will study include:

- Hand fitting skills
- Lathe work
- Assembling electronic circuits
- Producing mechanical assemblies
- CAD
- Project work
- Health and safety
- Online exam
- Practical work

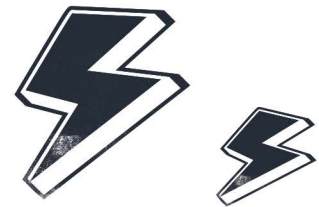
Progression routes include:

- Level 3 or T Level
- Employment
- Apprenticeship

Apply NOW!



51



LEVEL 3

DIPLOMA IN ENGINEERING TECHNOLOGIES – MECHANICAL & ELECTRICAL

Course Duration: 1 Year
Assessment: Exam and Practical
Entry Requirements: Grade 5 in English and maths

Mechanical Units:

- Understanding of engineering environmental health and safety
- Engineering environment health and safety
- Mechanical maintenance
- CAD
- Pneumatics principles
- Hydraulic principles
- Analog electronics
- Digital systems
- 30 hours' work experience

Electrical Units:

- Health and safety
- Engineering efficiency
- Engineering maths
- CAD
- Electrical testing
- Electrical maintenance
- Installation of electrical equipment

Optional Unit:

- Analogue electronics

Progression routes include:

- University
- Employment
- Apprenticeship
- Progression to University Campus North Lincolnshire (UCNL)

T-LEVELS

THE NEXT LEVEL QUALIFICATION

T LEVEL

ENGINEERING & MANUFACTURING (MECHANICAL MAINTENANCE)

Course Duration: 2 years
Entry Requirements: Grade 6 in GCSE maths, English and science
Equivalent to: Three A Levels

The first year of the T Level is made up of 17 units. In the second year students specialise in mechanical engineering.

The course has a substantial work placement where students spend a minimum of 315 hours' work experience with a local employer.

Topics you will study include:

- Mechanical principles
- Electrical principles
- Essential maths for engineering
- Engineering manufacturing control systems
- Health and safety principles
- Business, commercial and financial awareness
- Professional responsibilities
- Stock and asset management
- Continuous improvements
- Project and programme management
- Specialism in mechanical engineering
- 315 hours' work placement

Progression routes include:

- University
- Employment
- Apprenticeship
- Progression to University Campus North Lincolnshire (UCNL)

ENGLISH FOR SPEAKERS OF OTHER LANGUAGES (ESOL)

Open more doors by **improving your English.**

If English isn't your first language, this course is a great place to start. Our ESOL programme will help you build confidence in reading, writing, speaking and listening with support from friendly, experienced tutors. You'll also work on the skills you need for everyday life, further study, and future jobs. Once your English improves, you'll be ready to move on to a vocational course at college or take the next step towards your career goals.



“

The tutors are **very supportive and always ready to help**, and that face-to-face lessons are much more effective than online self-study. I recommended the Functional Skills English course, as completing it opens up **better job opportunities**. Although the course is more challenging, the tutors **explain everything clearly** and take an individual approach. I am now finishing Functional Skills Level 2, which is demanding but very useful thanks to the **support and resources provided by my tutor**.

OLGAMAKUKH

Olga first enrolled in ESOL Entry 3 in 2022 and has since made excellent progress, now studying Functional Skills Level 2. She has found the course especially valuable, as the tutors are able to communicate with her in her native language.



ENGLISH FOR SPEAKERS OF OTHER LANGUAGES (ESOL)

ENTRY LEVEL 1, 2, 3

ESOL STUDY PROGRAMME

Course Duration: 1 Year

Course Introduction

This is course is aimed at 16-18-year-olds who have English as a second language and need to improve their English language skills before progressing onto their chosen vocational area within the college or the world of work.

The course covers speaking and listening, reading and writing.

As part of the course you will also work towards a maths qualification if you haven't already got a grade 4 or higher for your GCSE. You will be taught by experienced English teachers and undertake 30 hours work placement as part of your qualification. The qualification is assessed in three levels from Entry 1 to Entry 3.

There are no entry requirements for our ESOL study programmes. You will be interviewed and assessed once we have received your application, and the specialist tutors will give you initial advice and guidance about the most appropriate course and level for you.



Apply NOW!



CAREERS...

- Many students progress into vocational subject areas on completion of the ESOL programme, depending on your career plans
- You can talk to our careers advisors about the individual opportunities available to you

AND MUCH MORE...

ENGLISH FOR SPEAKERS OF OTHER LANGUAGES (ESOL): ADULT PART TIME COURSES

There are no entry requirements for our ESOL Adult Programmes. You will be interviewed and assessed once we have received your application, and the specialist tutors will give you initial advice and guidance about the most appropriate course and level for you.

ENTRY 1 TO LEVEL 2

ESOL SPEAKING AND LISTENING

Course Introduction

This course is only available for those aged 19+, for those students aged 16-18, you would be required to undertake the ESOL study programme.

This course is taught to a variety of levels from Entry 1 to Level 2 and is delivered part-time for two sessions a week with start dates in September. The course runs for 12-14 weeks and then you will undertake an exam and progression courses will be discussed.

Assessment method

This qualification is assessed using a variety of methods including examinations and formative assessment.

You will learn how to listen and respond to extended and detailed spoken language, how to speak and communicate detailed information, how to share ideas and opinions clearly and appropriately, how to engage in discussion in a variety of situations making clear and effective contributions.



ENTRY 1 & ENTRY 2

ESOL READING

Course Introduction

This course is a standalone qualification and is only available to those aged 19+, for those students aged 16-18 you would be required to undertake the ESOL Study Programme. This course starts in January and runs for 7-8 weeks. At that point you will undertake an end point exam and progression courses will be discussed.

Assessment method

This qualification is assessed using a variety of methods including examinations and formative assessment.

You will learn how to read and understand meaning and purpose in a variety of texts and how to obtain different information from a variety of sources, along with reference materials and spelling strategies to support understanding.

You will have an assessment to make sure you are at the right level for the course. You will be interviewed and assessed once we have received your application and the specialist tutors will give you initial advice and guidance about the most appropriate course and level for you.

ENTRY 1 & 2

ESOL WRITING

This course is a standalone qualification and is only available to those aged 19+, for those aged 16-18 you would be required to undertake the ESOL Study Programme. This course starts in March and runs for 12 weeks. At that point you will undertake an end point exam and progression courses will be discussed.

Assessment method

This qualification is assessed using a variety of methods including examinations and formative assessment.

You will learn how to write to communicate ideas for different audiences and purposes as well as use of accurate spelling, punctuation and grammar.

You will have an assessment to make sure you are at the right level for the course. You will be interviewed and assessed once we have received your application and the specialist tutors will give you initial advice and guidance about the most appropriate course and level for you.



ENGLISH FOR SPEAKERS OF OTHER LANGUAGES (ESOL)

PRE-ENTRY

ESOL ILP (NON-ACCREDITED)

Starts: September, January, March

This is a course designed for students who are truly at the start of their learning journey with English. This course would also be beneficial to those who may have limited literacy skills in their first language. Students work on their own individual targets with a view to progressing onto a qualification. Delivery is face-to-face, twice a week in three hour sessions.

Course Fees

Many learners access ESOL courses for free, subject to status checks. If you do have to pay, fees range from £0 - £257 for home-status students.

ENTRY 3, LEVEL 1 & LEVEL 2

CITY AND GUILDS FUNCTIONAL SKILLS ENGLISH FOR ESOL LEARNERS

Starts: January

Students will develop their English skills in order to be able to take part in discussions and conduct presentations effectively. They will be able to complete complex forms, write reports, emails and letters in order to function in everyday life.

Assessment will include three exams as well as an initial entry diagnostic and informal assessments throughout the course. There are three components to Functional Skills English (these are reading, writing and speaking, listening and communicating). All three components are internally assessed and internally quality assured by the centre and externally quality assured by City & Guilds.

Applicants must be able to demonstrate that they are working towards the level of the course they are applying to during their initial assessment and interview to be offered a place. At interview, careers guidance will also be given to ensure that this is the most appropriate course.

ENTRY 1, 2 & 3

FUNCTIONAL SKILLS MATHS FOR ESOL LEARNERS

We also offer students enrolled on an ESOL course the opportunity to develop their mathematics by additionally enrolling onto a Functional Skills maths for ESOL learners. This is fully funded and will run for two hours a week throughout the year. Please ask your tutor for details once enrolled.



FOUNDATION STUDIES

Start your journey to **independence.**

If you're preparing for a future course or want to develop life skills for independent living, our Foundation Studies programmes are designed to help you grow. You'll learn in a supportive, hands-on environment with plenty of opportunities to build confidence.

Our Foundation Studies unit, located on the ground floor of the brand-new Lindsey Building, features state-of-the-art facilities, including a lifelike flat with a kitchen, bathroom, and living space, plus a dedicated drop-off and pick-up area. Everything has been created to support your journey towards real-world independence.

Students can also take part in a wide range of extra-curricular activities, from Makaton and walking football to Lego club and more.

Join our welcoming college community and take the next step forward, in your own way.



“

The thing I have **enjoyed the most** while at North Lindsey College is **the friends I have made** and the **staff who have helped me progress.**

BAILEY MONAGHAN

Bailey joined North Lindsey College after leaving St Hugh's School. One of the key reasons she chose North Lindsey was its supportive learning environment, particularly the flatlet, which gave her the opportunity to develop valuable independent life skills.

Since joining, Bailey has truly thrived. She has played an active role in the Makaton Choir, taken part in performances and also delivered heartfelt performances for care home residents and dementia service users. Beyond the stage, Bailey is a talented songwriter, creating her own lyrics to instrumentals from YouTube. Her work even caught the attention of well-known YouTube composer Jake Angel Beats, who personally congratulated her with a video message.

Bailey has now progressed onto the Performing Arts course, with aspirations of becoming either a children's entertainer or a radio presenter.



FOUNDATION STUDIES

GATEWAY LEVEL 1

CERTIFICATE IN PROGRESSION

Course Duration: 1 Year

Entry Requirements: There are no formal entry requirements, but learners will be assessed to ensure they are working at Entry Level 3 or above in English and maths. This ensures they can fully engage with the course content.

Course Introduction

The Gateway Level 1 Certificate in Progression is a flexible, pre-vocational qualification designed to support learners in developing the personal, social, and employability skills needed to progress into further education, training, or employment. It is particularly suitable for learners with learning difficulties and/or disabilities.

The course includes a wide range of units tailored to individual needs and interests. These may include:

- Independent travel
- Personal safety
- Self-advocacy
- Developing relationships
- Employability skills
- Literacy, numeracy, and ICT
- Personal development
- Sector-specific tasters (e.g., health and social care, construction, ICT, and creative industries)

The flexibility of the course allows learners to build a personalised programme that supports their goals and aspirations.

Progression routes include:

- Successful learners can progress to:
- Level 1 or Level 2 vocational qualifications
- Apprenticeships
- Supported internships
- Employment or volunteering opportunities
- Further personal development programmes



ENTRY 2/3

EMPLOYABILITY SKILLS

Course Duration: 1 Year

Entry Requirements: Educational references. An interview with the course leader to assess suitability.

Course Introduction

These courses are designed to support learners in developing the essential skills needed for employment, further study, and independent living. They are ideal for post-16 learners with mild to moderate learning difficulties who are preparing for adult life.

Learners will study a range of practical and personal development units, including:

- Planning for progression
- Personal finance
- Behaviour at work
- Effective communication
- Introduction to ICT
- Applying for a job
- Improving personal manner and conduct
- Searching for a job
- Workplace safety and emergency procedures
- Identifying hazards in familiar settings
- Working as part of a group
- Healthy living
- Personal skills
- Making a familiar journey safely
- Environmental awareness
- Dealing with problems in daily life

Progression routes include:

- Entry Level 3/Level 1 vocational courses (e.g., Land-Based or Catering)
- Supported employment or further study in areas such as construction, digital technologies, or public services

Apply NOW!



HAIRDRESSING & BEAUTY THERAPY

Your career
glow up
starts here.

Find yourself watching make-up tutorials or hair colour transformations online and thinking, 'I want to do that'? At North Lindsey College, you'll train like a pro from day one. Step into Ora, our on-site commercial salon, and work with real clients, guided by expert tutors who've been there and done it in the industry.

With hands-on experience, access to professional equipment, and the chance to take part in competitions and workshops, you'll be gaining skills that set you apart. No experience needed – you'll just need a love for all things hair, beauty, and/or nails, and a streak of enthusiasm.

glow



“

My experience at North Lindsey College **couldn't have been more positive.** Every day I learned something new—something I felt truly passionate about. **Our tutors, were incredible.** Their passion for the industry is contagious, and they were always willing to take the time to explain things until we felt confident **working with real clients.**

MARTADIAZ

Marta chose to study at North Lindsey College after hearing positive recommendations from professional hairdressers.

Having previously worked in beauty and makeup, Marta's passion for hairdressing developed more recently. She was eager to take a new direction in her career—wanting not only to gain a qualification, but to become a truly skilled hairdresser in an industry she describes as both creative and inspiring.

Today, Marta is proudly working at Sally's Services, a leading hairdressing wholesaler. She's also in the exciting process of building her own business, gaining regular clients while continuing her studies at Level 3.



HAIRDRESSING

LEVEL 1

VTCT CERTIFICATE IN AN INTRODUCTION TO HAIRDRESSING

Course Duration: 1 Year
Assessment: 100% Practical
Entry Requirements: 4 GCSEs grade 1-3

- Mandatory units:**
- Introduction to the hair and beauty sector
 - Presenting a professional image

- Optional units:**
- Style hair using hairdressing techniques
 - Shampoo and conditioning
 - Plaiting and twisting
 - Client care

- Progression routes include:**
- Level 2 Diploma
 - Apprenticeship

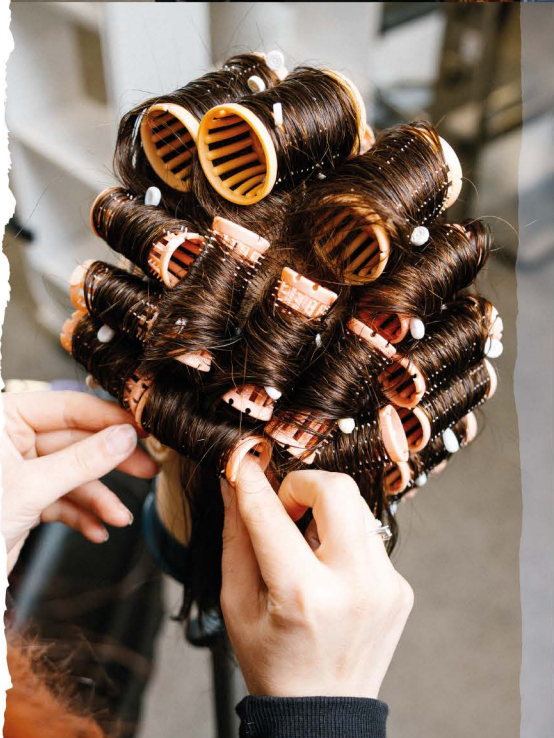
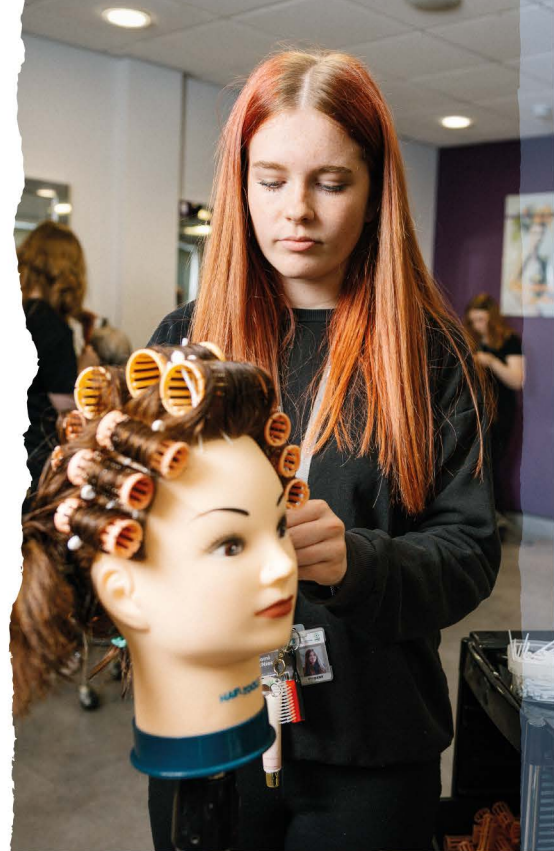
LEVEL 2

DIPLOMA IN WOMEN’S HAIRDRESSING

Course Duration: 1 Year
Assessment: 70% Practical Assessments, 30% Exam
Entry Requirements: 4 GCSEs grade 9-4

- Mandatory units:**
- Working in the hair industry
 - Health and safety
 - Client consultation
 - Shampooing and conditioning hair and scalp
 - Promoting products and services
 - Cutting hair
 - Colour and lighten hair
 - The art of hairdressing

- Optional units:**
- Create an image
 - Display stock and promote sales
 - Salon reception duties
- Progression routes include:**
- Apprenticeship
 - Employment
 - Progress on to Level 3



CAREERS...

- Aromatherapist
- Beauty Therapist
- Hair Colourist
- Image Consultant
- Massage Therapist
- Retail Sales
- Sales Executive in Hair or Beauty
- Special Effects Make-Up Artist
- TV & Film Make-up & Hair Artist
- Salon Manager
- Beauty Consultant
- Hairdresser/Stylist
- Make-Up Artist
- Nail Technician
- Manager in Cosmetics

AND MUCH MORE...

Example careers:	Avg £
Beauticians & Related Occupations	£13,343
Complementary Health Professionals	£27,693
Hairdressers and Barbers	£13,532
Hairdressing & Beauty Salon Managers	£27,781

Career and salary data powered by Lightcast™
September 2025

LEVEL 3

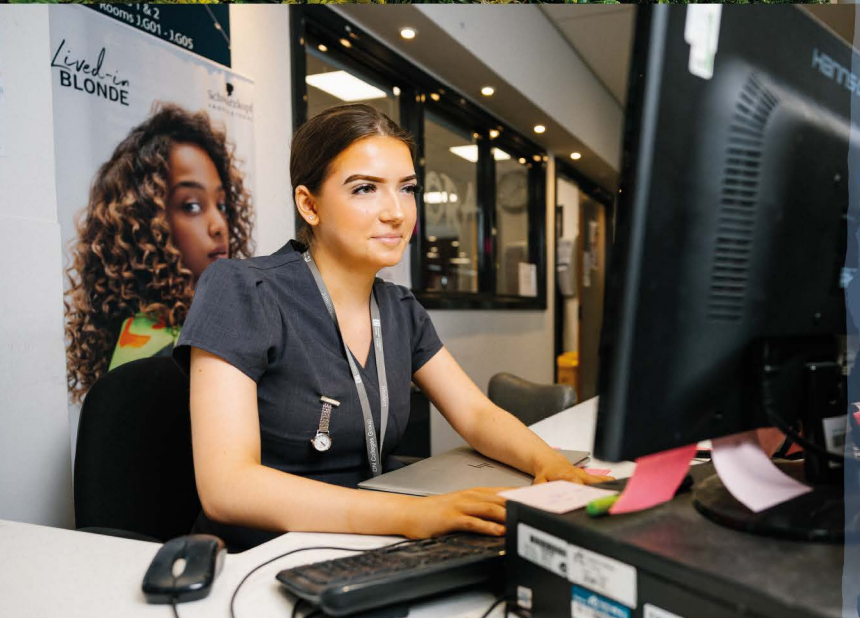
DIPLOMA IN HAIR SERVICES

Course Duration: 1 Year
Assessment: 70% Practical Assessments, 30% Exam
Entry Requirements: 4 GCSE grades 4 or above in English and maths including one science

- Mandatory units:**
- Health and safety
 - Client consultation
 - Advanced cutting
 - Advanced styling
 - Advanced colouring
 - Creative design

- Optional units:**
- Make and style a hair addition
 - Bridal hair
 - Promote and sell products
 - Colour correction
 - Salon reception duties
 - Display and promote products

- Progression routes include:**
- University
 - Apprenticeship
 - Employment



LEVEL 1

CERTIFICATE IN BEAUTY THERAPY

Course Duration: 1 Year

Assessment: 100% Coursework/Practical

Entry Requirements: 4 GCSEs grade 4 and under

Mandatory units:

- Introduction to the hair and beauty sector
- Presenting a professional image

Optional units:

- Providing basic manicure
- Basic make-up application
- Nail art application

➤ Progression routes include:

- Level 2 Diploma
- Apprenticeship



BEAUTY THERAPY

LEVEL 2

DIPLOMA IN BEAUTY THERAPY

Course Duration: 1 Year

Assessment: 70% Practical Assessments, 30% Exam

Entry Requirements: 4 GCSEs grade 9-4

Mandatory units:

- Working in the beauty industry
- Health and safety
- Client care and communication
- Promote products and services
- Salon reception duties
- Provide facial skincare
- Remove hair using waxing techniques
- Provide manicure treatments
- Provide pedicure treatments
- Provide eyelash and brow treatments

Optional units:

- Makeup application
- Creating an image

Progression routes include:

- Apprenticeship
- Employment
- Progress on to Level 3

LEVEL 3

DIPLOMA IN BEAUTY THERAPY

Course Duration: 1 Year

Assessment: 70% Practical Assessments, 30% Exam

Entry Requirements: 4 GCSE grades 4 or above in English and maths including one science

Units you may study include:

- Monitor and maintain health and safety
- Promote and sell products
- Provide body massage
- Client care and communication
- Provide facial electrotherapy treatments
- Provide body electrotherapy treatments
- Provide electrical epilation
- Spray tanning
- Apply individual permanent lashes
- Apply micro-dermabrasion
- Apply stone therapy massage
- Maintain personal health and wellbeing

Progression routes include:

- University
- Employment
- Apprenticeship

ALONGSIDE YOUR STUDY PROGRAMME, YOU MAY ALSO GET THE OPPORTUNITY TO COMPLETE ADDITIONAL QUALIFICATIONS:

- Gel nails
- Brow lamination
- LVL lashes



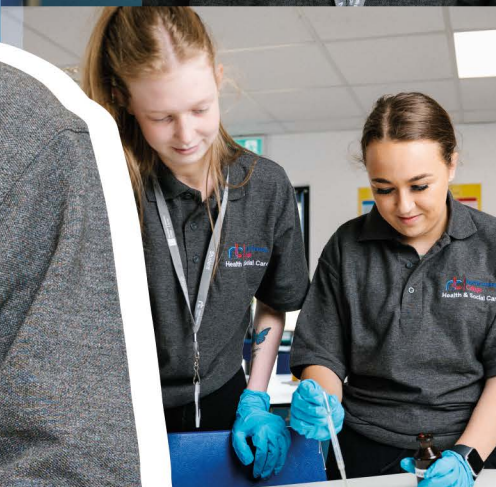
HEALTH & SOCIAL CARE

Learn real skills to make a real difference.

Our Health and Social Care students learn in a state-of-the-art health training suite designed to mirror real-life settings, complete with nursing stations, dementia simulation, hoist machinery, and the latest medical equipment. Whether you're aiming for a career in nursing, social care, or support services, you'll gain lots of practical experience to prepare you for a rewarding future.

With more than 100,000 NHS vacancies nationwide¹, the demand for skilled health and social care professionals is higher than ever and there's never been a better time to explore a career in this vital sector. Get real skills. Make a real difference.

¹Source: NHS Digital (NHS Vacancy Statistics April 2015 – March 2025)



“

I felt there was a lot of support at College from tutors and other staff. The course is the reason why I got a place at university. It prepared me and helped with completing assignments and referencing which made it easier at university. My placements gave me a greater understanding of what a job in health and social care could be like. **It was the best decision I made** in terms of my career pathway.

AMY SPARKS

Amy, a previous Winterton Community Academy student, is now a fully qualified registered nurse and works in accident and emergency.

After finishing school, Amy enrolled on a Level 3 Extended Diploma in Health and Social Care and achieved an A grade, equivalent to three grade As at A Level. In her first year, Amy completed work experience at Emerald Care Services, a local care provider. She then went on to complete a work experience placement, working with children, on the Disney Ward at Northern Lincolnshire and Goole NHS Foundation Trust.



HEALTH & SOCIAL CARE

LEVEL 1

CERTIFICATE IN HEALTH & CARE

Course Duration: 1 year

Assessment: 100% coursework

Entry Requirements: Grade 1 in maths or English. If no GCSE grades, a diagnostic test will be carried out to assess suitability

Units you may study include:

- Communication
- Equality and inclusion
- Person-centred support
- Service provision and roles
- Understanding risk
- Safeguarding
- Engagement and leisure
- Infection prevention and control
- Time management

Progression routes include:

- Level 2 Certificate in Health & Care
- Employment
- Apprenticeship

LEVEL 2

CERTIFICATE IN HEALTH & CARE

Course Duration: 1 year

Assessment: 100% coursework

Entry Requirements: GCSE maths and English, grades 2 or 3

Units you may study include:

- Communication
- Equality and inclusion
- Person-centred approaches
- Working in health and social care
- Protection and safeguarding
- Handling information in social care settings
- Food safety
- Interview skills
- Time management

Progression routes include:

- Technical Level 3 Extended Diploma in Health & Social Care
- Employment
- Apprenticeship



Apply NOW!



CAREERS...

- Nurse
- Cosmetics Nurse
- Paramedic
- Occupational Therapist
- Social Worker
- Physiotherapy Assistant
- Care Assistant
- Occupational Health
- Nurse Audiologist
- Counsellor
- Psychotherapist
- Probation Officer
- Safeguarding Officer
- Health Care Assistant
- Podiatrist
- Activities Co-Ordinator
- Support Worker
- Nurse Associate
- Emergency Medical Dispatcher
- Practice Nurse

AND MUCH MORE...

Example careers:

Social Worker	£37,444
Registered Mental Health Worker	£38,829
Occupational Therapist	£28,613
Paramedic	£42,714

Avg £

Career and salary data powered by Lightcast™
September 2025

TECHNICAL LEVEL 3

EXTENDED DIPLOMA IN HEALTH & SOCIAL CARE

Course Duration: 2 years

Assessment: 85% coursework, 15% exams, 175 hours placement in a real work setting

Entry Requirements: GCSE maths and English grades 4 or above

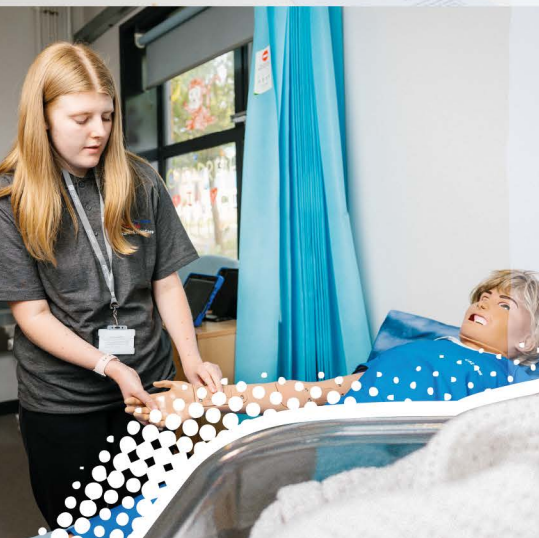
Units you may study include:

- Human lifespan development
- Working in health and social care
- Meeting individual care and support needs
- Principles of safe practice in health & social care
- Sociological perspectives
- Psychological perspectives

Progression routes include:

- University
- Employment
- Apprenticeship





HEALTH & SOCIAL CARE

T-LEVELS

THE NEXT LEVEL QUALIFICATION

T LEVEL

FOUNDATION YEAR HEALTH

Course Duration: 1 Year

Assessment Method: 100% coursework

Entry Requirements: Grade 4 in GCSE maths or English

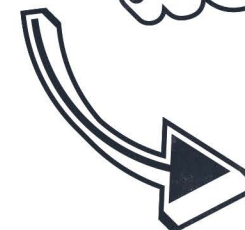
Units you may study include:

- Equality, diversity and rights in health and social care
- Human growth and development
- Safeguarding and protection in health and social care
- Communication in health and social care
- Working in health & social care
- Anatomy and physiology for health and social care
- Common care disorders

Progression routes include:

- Progress on to T Level – Health
- Employment
- Apprenticeship

Apply NOW!



T-LEVELS

THE NEXT LEVEL QUALIFICATION

T LEVEL

HEALTH (SUPPORTING THE ADULT NURSING TEAM OR MIDWIFERY PATHWAY)

Course Duration: 2 years

Assessment: Two written examinations, employer set project, case study assessment, two practical activity assessments and professional discussion

Entry Requirements: Grade 4 or above in GCSE maths, English and Science

Units you may study include:

- Working within the health and science sector
- The healthcare sector
- Health, safety and environmental regulations in the health and science sector
- Health and safety regulations applicable in the healthcare sector
- Managing information and data within the health and science sector
- Managing personal information
- Good scientific and clinical practice
- Providing person-centred care
- Health and wellbeing
- Infection prevention and control in health specific settings
- Safeguarding
- Science concepts

Progression routes include:

- University
- Employment
- Apprenticeship
- Progression to University Campus North Lincolnshire (UCNL)

MOTOR VEHICLE

Love cars?

Get hands-on,
get hired.

If you're into fixing things, love cars, bikes or big engines, you can start your career journey at North Lindsey College. Our Motor Vehicle courses give you the skills to take on the real world, be that in the world of motorbikes, HGVs, scooters or specialist vehicles.

We have a full fleet of cars and HGVs, computerised diagnostic rigs, MOT bays, a fast fit centre, and even the latest hybrid and electric vehicles in our multi-million-pound Engineering Technology Centre, and you'll learn from tutors who've worked in the industry and know what it takes to succeed.

With access to sector-leading workshops and additional learning opportunities, it's no surprise we're the first choice for many future vehicle technicians across the region.

clutch



“

When I was looking at colleges, I had no idea what I wanted to do. **That's when I found the Motor Vehicle course at North Lindsey College—it set me on the path to university and ultimately to where I am now.**

TOM DRAYTON

Teaching wasn't something Tom ever imagined when he left Winterton Community Academy to study Motor Vehicle at North Lindsey College. However, while studying for his BEng (Hons) in Automotive Performance Engineering at the University of Bolton, he began supporting younger students with their coursework, assignments, and exam preparation—and soon discovered a natural talent for teaching.

Tom is now a Technician Instructor within the Motor Vehicle department, currently in his first full year of leading his own classes. With a strong passion for motorsport, he hopes to continue gaining experience and, in the future, progress to teaching motorsport at higher or further education level.



MOTOR VEHICLE

LEVEL 1

DIPLOMA IN VEHICLE SYSTEMS MAINTENANCE

Course Duration: 1 Year
Assessment: 100% Coursework
Entry Requirements: Grade 3 in maths and English at GCSE

Units you may study include:

- Engine lubrication systems
- Engine coding systems
- Fuel and exhaust systems
- Spark ignition systems
- Vehicle electrical systems
- Braking systems
- Vehicle transmission
- Steering and suspension
- Wheels and tyres
- Engine operation principals
- English
- Maths

Progression routes include:

- Level 2 Certificate
- Employment
- Apprenticeship

Check out our **Engineering and Motor Vehicle Multi-Skill** course:

LEVEL 1

ENGINEERING TECHNOLOGIES (MULTI-SKILL)

Course Duration: 1 Year
Assessment: 100% Coursework
Entry Requirements: GCSE Grade 0-3 in English and maths

Topics you will study include:

- Introduction to working in engineering
- Introduction to motor vehicle maintenance
- Introduction to mechanical and electrical maintenance
- Introduction to manual metal arc welding
- Introduction to electrical installation
- Introduction to basic maths and science used in engineering

Progression routes include:

- Level 2
- Employment
- Apprenticeship

LEVEL 2

CERTIFICATE IN LIGHT VEHICLE MAINTENANCE

Course Duration: 1 Year
Assessment: 80% Practical, 20% Exam
Entry Requirements: GCSE grade 4 in English and maths

You will complete 9 units covering a wide range of light vehicle maintenance skills. In addition, you will also work on developing your maths skills alongside the course.

You will build skills in:

- A variety of vehicle systems
- Investigative skills
- Problem solving skills
- Practical skills

Progression routes include:

- Level 2 Diploma
- Employment
- Apprenticeship

LEVEL 2

DIPLOMA IN LIGHT VEHICLE MAINTENANCE

Course Duration: 1 Year
Assessment: 60% Practical, 40% Exam
Entry Requirements: GCSE grade 5 in English and maths

You will complete 18 units covering a wide range of light vehicle maintenance skills. In addition, you will also work on developing your maths skills alongside the course.

You will build skills in:

- A variety of vehicle systems
- Investigative skills
- Problem solving skills
- Practical skills

Progression routes include:

- Level 3 Diploma
- Employment
- Apprenticeship

CAREERS...

- Electric Vehicle Technician
- MOT Tester
- Motorsport Engineer
- Workshop Supervisor
- HGV Technician
- Tyre Fitter
- Paint Technician
- Mechanic
- Breakdown Engineer
- Senior Technician
- Garage Manager
- Service Advisor
- Motor Vehicle Insurance Adviser
- Panel Beater Valeter

AND MUCH MORE...

Example careers:	Avg £
Garage Managers and Proprietors	£37,600
Tyre, Exhaust & Windscreen Fitters	£25,039
Vehicle Body Builders and Repairers	£31,509
Vehicle Technicians	£35,053

Career and salary data powered by Lightcast™
September 2025

LEVEL 3

DIPLOMA IN LIGHT VEHICLE MAINTENANCE

Course Duration: 1 Year
Assessment: 100% Coursework
Entry Requirements: GCSE grade 5 in English and maths

Units you may study include:

- Knowledge of diagnosing and rectifying automotive vehicle auxiliary electrical faults
- Knowledge and competency in diagnosing and rectifying light vehicle engine faults
- Knowledge of diagnosing and rectifying light vehicle transmission and drive line faults
- Competency in diagnosing and rectifying light vehicle engine chassis
- Extending practical skills to complete synoptic assessments

Progression routes include:

- Employment
- Apprenticeship
- University



MUSIC

Your music. Your career.

Did you know the UK music industry is the third biggest in the world¹? That means real opportunities for creative young people like you.

At North Lindsey College, you'll explore your passion for music performance or production in industry-standard studios with expert tutors who know the scene inside out.

From writing and recording to mixing and live performances in local venues, you'll build your skills through hands-on projects. By the end of the course, you'll create a final major project that showcases your unique sound and style.

We take music and passion seriously. Whether you dream of being on stage or behind the scenes, this is where your career in this exciting industry begins.

¹Source: UK Music



Recording our first single was a great opportunity. It was professionally mixed and mastered. It has been huge for us, **a massive jump in our careers.** Poet's Corner is us now and we want to continue. The only way to go is up. We are doing something people only dream of doing. If it were not for the college, we would not have met, and **we would not be where we are today.**

CAYDENORAM

Cayden, a former Frederick Gough Student, is part of local band Poet's Corner. Recently, they launched their debut single 'Over and Over' with, local record label, Warren Records.

The single is already captivating listeners and racking up streams on Apple Music and Spotify.

Throughout their time at North Lindsey College, Poet's Corner has been lighting up local venues such as Cafe Indie, showcasing their passion for music and performance. With dreams of stardom and plans to pursue music degrees at university, these students are just getting ready to take their first steps on an exciting journey.



LEVEL 2

UAL DIPLOMA IN MUSIC PERFORMANCE & PRODUCTION

Course Duration: 1 Year
Assessment: 40% Coursework, 60% Practical
Entry Requirements: 4 GCSEs at grade 3 including English or maths. Instrumentalist/Vocalist do not need to have a graded music certificate, however, we do expect skills level to be at grade 3 standard.

Students have the opportunity to specialise either in music performance or music production, developing their music tech skills.

Units you may study include:

- Introduction to music performance
- Introduction to music production
- Listening skills for music performance and production
- Exploring music composition
- Contextual research for music performance and production
- Music performance skills and practice
- Music production skills and practice
- Music performance and production project

Progression routes include:

- UAL Level 3 Diploma in Music Performance and Production
- Employment
- Apprenticeship

LEVEL 3

UAL DIPLOMA IN MUSIC PERFORMANCE & PRODUCTION

Course Duration: 1 Year
Assessment: 40% Coursework, 60% Practical
Entry Requirements: 5 GCSEs at grade 9-4 including English and maths. Instrumentalist/Vocalist do not need to have a graded music certificate, however, we do expect skills level to be at grade 4 standard or Level 2 UAL Diploma in Music Performance and Production.

Students have the opportunity to specialise either in music performance or music production, developing their music tech skills.

Units you may study include:

- Principles of music performance and production
- Critical listening and music composition
- Music industry and professional practice
- Critical and contextual awareness for music performance and production
- Music production in context
- Music performance in context
- Preparation for specialist study in music performance and production
- Collaborative music performance project

Progression routes include:

- UAL Extended Diploma in Music Performance and production
- University
- Employment
- Apprenticeship



CAREERS...

- Musician
- Songwriter
- Sound Engineer
- Artist Manager
- Tour Manager
- Representation
- Producer
- Composer
- Teacher/Lecturer
- Publicist
- Music Journalist
- Technician
- Stage Management

AND MUCH MORE...

Example careers:	Avg £
Arts Officers, Producers & Directors	£34,896
Directors in the Creative Industries	£43,963
Musicians	£29,686

Career and salary data powered by Lightcast™
 September 2025

LEVEL 3

UAL EXTENDED DIPLOMA IN MUSIC PERFORMANCE AND PRODUCTION

Course Duration: 2 Years
Assessment: 40% Coursework, 60% Practical
Entry Requirements: 5 GCSEs at grade 9-4 including English and maths. Instrumentalist/Vocalist do not need to have a graded music certificate, however, we do expect skills level to be at grade 4 standard or Level 3 UAL Diploma in Music Performance and Production.

Students have the opportunity to specialise either in music performance or music production, developing their music tech skills.

Units you may study include:

- Principles of music performance and production
- Critical listening and music composition
- Music industry and professional practice
- Critical and contextual awareness for music performance and production
- Music production in context
- Music performance in context
- Preparation for specialist study in music performance and production
- Collaborative music performance project

Progression routes include:

- University
- Employment
- Apprenticeship



PERFORMING ARTS

It's time to take **centre stage.**

If you love to act, dance, or perform, we can help you make it your future. Our Performing Arts department supports students with all kinds of talents, whether it's acting, dance, or musical theatre, to help your dreams take flight.

Train full-time in our spacious studios, where you'll take part in a mix of internal and external performances throughout your course. You'll also get access to professional training, industry headshots, free one-to-one audition prep, in-house auditions for stage schools, workshops with industry pros, and much more.

Our graduates go on to study at some of the country's top performing arts schools, including Italia Conti, Arts Ed, Performers College, Rose Bruford, and the Royal Academy of Dance, proving we're the launchpad for plenty of future stars. The stage is set – just bring your passion!

MOVES



“

My long-term goal is to complete my training at drama school and **work professionally with companies like the Royal Shakespeare Company, The PappyShow, or the National Theatre.** I'm also open to the idea of moving abroad to grow and diversify my career even further.



CHARLIETHOMPSON

Charlie joined North Lindsey College after leaving Frederick Gough School, driven by his ambition to pursue a career in acting.

During his time at the College, Charlie embraced a range of incredible opportunities—including international work placements, dynamic workshops with industry professionals, and the honour of performing at prestigious national youth theatre festivals. These experiences played a key role in shaping his craft and building his confidence on stage.

Charlie's talent, dedication, and hard work led to an outstanding achievement: securing a place at Rose Bruford College—marking a first for North Lindsey College and a proud milestone for both him and the department.



PERFORMING ARTS

LEVEL 2

UAL AWARD IN PERFORMING & PRODUCTION ARTS (ACTING, DANCE OR MUSICAL THEATRE)

Course Duration: 1 Year

Assessment: 100% Internal assessment

Entry Requirements: Successful audition and grade 2 or above in English or maths

Units you may study include:

- Introduction to performance
- Introduction to production

Progression routes include:

- UAL Level 2 Diploma in Performing and Production Arts (Acting, Dance or Musical Theatre)
- Further study
- Employment
- Apprenticeship

LEVEL 2

UAL DIPLOMA IN PERFORMING & PRODUCTION ARTS (ACTING, DANCE OR MUSICAL THEATRE)

Course Duration: 1 Year

Assessment: 100% Internal assessment

Entry Requirements: 4 GCSEs graded 3 or above including maths, English and a successful audition

Units you may study include:

- Introduction to performance
- Introduction to production
- Communicating with an audience
- Staging a performance
- Contextual research for performance and production
- Performance skills and practice
- Production skills and practice
- Personal project and presentation
- Producing and performing to an audience

Progression routes include:

- UAL Level 3 Diploma in Performing and Production Arts (Acting, Dance or Musical Theatre)
- Further study
- Employment
- Apprenticeship

LEVEL 3

UAL DIPLOMA IN PERFORMING & PRODUCTION ARTS (ACTING, DANCE OR MUSICAL THEATRE)

Course Duration: 1 Year

Assessment: 100% Internal assessment

Entry Requirements: 5 GCSEs graded 4 or above including maths, English and a successful audition

Units you may study include:

- Principles of performance
- Engaging with an audience
- Introduction to professional practice
- Critical and contextual awareness
- Production skills and context
- Performance skills and context
- Preparation for specialist study
- Collaborative performance project

Progression routes include:

- UAL Level 3 Extended Diploma in Performing and Production Arts (Acting, Dance or Musical Theatre)
- Further study
- Employment
- Apprenticeship

CAREERS...

- Professional Dancer
- Musical Theatre Performer
- Actor (Advertising, Film, Radio, Theatre, TV)
- TV Presenter
- Radio Host
- Broadcast Journalist
- Choreographer
- Teacher
- Community Arts Worker
- Vlogger
- Media Researcher
- Creative Production
- Teacher
- TV Presenter Vlogger
- Stage Manager
- Screenwriter
- Musician
- Studio Sound Engineer

AND MUCH MORE...

Example careers:

Actors, Entertainers and Presenters	£29,686
Arts Officers, Producers & Directors	£34,896
Authors, Writers and Translators	£21,963
Dancers and Choreographers	£29,686
Directors in the Creative Industries	£43,963

Avg £

Career and salary data powered by Lightcast™
September 2025

LEVEL 3

UAL EXTENDED DIPLOMA IN PERFORMING & PRODUCTION ARTS (ACTING, DANCE OR MUSICAL THEATRE)

Course Duration: 1 Year

Assessment: 100% Internal assessment

Entry Requirements: 5 GCSEs graded 4 or above including maths, English and a performing arts subject. To gain entry on this course you must have successfully completed a Level 3 Diploma in Performing Arts. This study programme is equivalent to three A Levels

Units you may study include:

- Developing performance and production skills
- Preparing for progression
- Exploration of specialist study and context
- Extended project

Progression routes include:

- University
- Employment
- Apprenticeship

Apply Now!



ual: awarding body



SPORT, PHYSICAL ACTIVITY & EXERCISE SCIENCE

Kick off your career in sport.

Ready to turn your passion into a winning career?

Our courses are perfect for anyone wanting to work in sports science, therapy, PE teaching, coaching, fitness, or exercise science. Many students go on to university, start apprenticeships, or land jobs after completing their studies.

You'll train in top-class facilities, including a fully equipped gym, massage therapy room, confidence course, MUGA, and a football pitch.

To boost employability, our students have the chance to complete additional industry-recognised qualifications alongside their main course, covering

topics such as safeguarding and mental health. We're also proud to have held the industry-standard TASS accreditation for over four years, supporting talented athletes as they balance their education with sporting commitments.



The **highlight of my time** at North Lindsey was **definitely the friends I made**—both in class and through football. There was a **great atmosphere in the squad**, and I think that the **team spirit really helped us win** as many games as we did.

ASHLEY BETTS

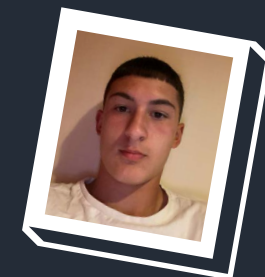
After leaving Huntcliff School, Ashley chose to study at North Lindsey College due to the hands-on, practical approach offered on the course.

Ashley built lasting friendships during his time at college, both with classmates and as a member of the football team. The spirit of teamwork and the supportive environment played a key role in their success on the field.

A standout experience for Ashley was the trip to St Lucia, which provided a rare and enriching opportunity to immerse himself in a different culture.

Since leaving College, Ashley has gone on to study sport journalism at the University of Lincoln. During his studies, he completed a three-month internship with Scunthorpe United—a role he credits to the support he received from North Lindsey College, where he first gained experience through a one-week placement with the club. In addition, he secured a summer placement with England Golf, covering major amateur golf events across the UK.

Now entering his third year at university, Ashley is aiming for a career in football media or communications.



SPORT, PHYSICAL ACTIVITY & EXERCISE SCIENCE

LEVEL 1

AWARD IN SPORT & UNIFORMED SERVICES

Course Duration: 1 Year

Assessment: 100% Coursework and Practical Skills

Entry Requirements: This study programme is designed for students who have not achieved a grade 4 at GCSE in maths and English

Units you may study include:

- Taking part in exercise and fitness
- Planning own fitness programme
- Preparing for an interview
- Working in a team
- Participating in sport or active leisure activities
- Anatomy and physiology
- Planning a healthy diet
- Employability skills and technical skills

Progression routes include:

- Progress onto Level 2 Sport and Active Leisure or Level 2 Gym Instructing
- Employment
- Apprenticeship

LEVEL 2

CERTIFICATE IN SPORT, HEALTH & WELLBEING

Course Duration: 1 Year

Assessment: 100% Coursework and Practical Skills

Entry Requirements: Grades 2 or 3 in either maths or English at GCSE or Level 1 Sport Qualification

Units you may study include:

- Participating in sport
- Anatomy and physiology for exercise
- Healthy exercise and nutrition
- Sports coaching
- Physical fitness and injuries in sport
- Planning a sports event
- Plan, deliver, and evaluate an activity session

Progression routes include:

- Progression to Level 2 Certificate in Gym Instructing or Level 3 Extended Diploma in Sport & Exercise Science
- Apprenticeship
- Employment



Apply NOW!



CAREERS...

- PT Instructor
- Professional Athlete
- Fitness Instructor
- Gym Manager
- Sport Development Officer
- Sport Coach
- Sport & Exercise Scientist
- Sport Nutritionist
- Sport Therapist
- Sport Technologist
- Environmental Health
- Paramedic
- Physiotherapist
- Podiatrist
- Sport Psychologist
- Leisure Attendant
- PE Teacher/Tutor
- Community Sport Coordinator
- Personal Trainer
- Health Trainer
- Wellness Coach

AND MUCH MORE...

Example careers:

Physiotherapist	Avg £ £43,414
Leisure or Sports Managers	£29,509
Occupational Therapist	£28,613

Career and salary data powered by Lightcast™
September 2025

LEVEL 2

CERTIFIED FITNESS & EXERCISE SPECIALIST

Course Duration: 1 year

Entry Requirements: Grade 4 or above in GCSE English and maths

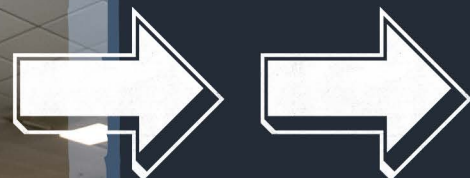
Assessment: Knowledge assessment, assignments (coursework), observation and questioning

Units you may study include:

- Anatomy and physiology
- Principles of fitness training
- Principles of nutrition and lifestyle
- Health and safety in a fitness environment
- Professionalism and customer care
- Conducting client consultations
- Planning and delivering fitness sessions
- One day industry placement in a local gym

Progression routes include:

- Level 3 Certified Fitness & Exercise Specialist
- Employment
- Active IQ Level 3 Diploma in Sport Massage Therapy
- Apprenticeship
- Additional qualifications in safeguarding
- Additional qualifications in Instructing Circuit Training



LEVEL 3

CERTIFIED HEALTH, FITNESS & EXERCISE SPECIALIST

Course Duration: 1 year

Entry Requirements: GCSE Grade 4 or above in English and maths, Level 2 certificate in gym instructing and/or Level 2 certificate in fitness coaching

Assessments: Knowledge assessment, multiple choice exam

Assignments: Observations and questioning, case studies

Units you may study include:

- Applied anatomy and physiology
- Principles of nutrition for exercise and health
- Understanding lifestyle, wellbeing and common medical conditions
- Encouraging positive health and fitness behaviours
- Programme design and delivery for personal training and exercise referral
- Professionalism and business acumen for personal trainers
- Understanding medical conditions for exercise referral
- One day industry placement in a local gym
- First aid

Progression routes include:

- Active IQ Level 3 Diploma in Sport Massage Therapy
- Active IQ Level 3 in Adapting Physical Activity for Anterior and Posterior Clients (Award)
- Active IQ Level 3 in Optimising Training for the Ageing Client (Award)
- Active IQ Level 4 in Exercise for the Management of Lower Back Pain (Certificate)
- Active IQ Level 4 in Exercise and Nutritional Interventions for Obesity and Diabetes

Apply Now!



Alongside your study programme, you may also get opportunity to complete the following qualifications:

Level 2 Award in Instructing Circuit Training
 Level 2 Studio Cycling
 Level 1 Mental Health Awareness
 Level 1 Award in Safeguarding
 Level 1 Award in Alcohol Awareness

SPORT, PHYSICAL ACTIVITY & EXERCISE SCIENCE

LEVEL 3

EXTENDED DIPLOMA IN SPORT & EXERCISE SCIENCE

Course Duration: 1-2 Years

Assessment: 100% Coursework & Practical Skills

Entry Requirements: Grade 4 maths and English at GCSE

Equivalent to: Three A Levels

Units you may study include:

Year 1

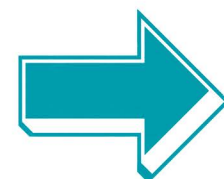
- Sports coaching
- Practical team sports
- Instructing physical activity
- Principles of anatomy and physiology
- Fitness training and programming
- Fitness testing
- Preparing for a career in sport and physical activity
- Exercise, health, and lifestyle
- Sports injuries

Year 2

- Sport and exercise massage
- Analysis for sports performance
- Leadership in sport
- Strength and conditioning
- Sports nutrition
- Psychology for sports performance
- Biomechanics
- Laboratory and field-based experiment methods
- Physiology of fitness

Progression routes include:

- University
- Employment
- Apprenticeship
- Progression to University Campus North Lincolnshire (UCNL)



LEVEL 3

EXTENDED DIPLOMA IN SPORT & PHYSICAL ACTIVITY (SPORTS COACHING)

Course Duration: 1-2 Years

Assessment: 100% Coursework & Practical Skills

Entry Requirements: A minimum of 5 GCSES at grade 4 and above including maths and English. The correct candidate should have an interest in playing regular football

Equivalent to: Three A Levels

Scunthorpe United Football & Education Scholarship

You can expect to undertake up to 10 hours of football training per week, plus match days, supported by 15 hours' classroom-based training per week.

Units you may study include:

Year 1

- Exercise, health and lifestyle
- Preparing for a career in sport and physical activity
- Sports coaching
- Fitness testing for sport and exercise
- Principles of anatomy and physiology
- Assessing risk in sport
- Current issues in sport
- Technical and tactical skills in sport
- Instructing physical activity and exercise

Year 2

- Practical team sports the physiology of fitness
- Psychology of sports performance
- Analysis of sports performance sports nutrition
- Sports injuries
- Organising sports events
- Work experience in sport
- The athletes' lifestyle

Progression routes include:

- University
- Employment
- Apprenticeship
- Progression to University Campus North Lincolnshire (UCNL)



TRAVEL & TOURISM

A career that can
take you anywhere.

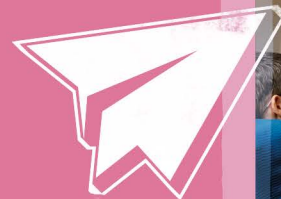
Britain's booming tourism industry now contributes nearly £286 billion to the UK economy and supports around 3.8 million jobs¹. That means there's never been a better time to explore a career in travel and tourism.

Whether you dream of jetting off as cabin crew, working airport side as ground staff, or joining the fun in events, hospitality, or UK tourism, our course can take you there.

North Lindsey College stands out with the only air cabin in the region, giving you real crew experience on campus.

You'll also have the chance to take part in incredible overseas work opportunities, like our recent two-week, fully funded stint in Fiji through the Government's Turing Scheme. With strong industry links and alumni working worldwide, the world really is your oyster - start your adventure here!

¹Source: visitbritain.org



I chose my course because **Cabin Crew is what I've always wanted to do**, and I knew that North Lindsey College would help me achieve that. **I really enjoyed my time at the college** thanks to my tutors whose experience helped me a lot and made the course interesting.

SUMMER WALLACE

Summer Wallace, a former student of Frederick Gough School, joined us to study Cabin Crew, turning her life-long passion for travel into a real career.

With the support of her expert tutors and hands-on training, Summer landed her dream job at British Airways. She's now based in Crawley, flying out of London Gatwick, and absolutely loving life in the skies.

Summer credits the course – and especially her tutors – for helping her take off in the aviation industry. If you've ever dreamed of travelling the world and working as Cabin Crew, her journey proves that with our help, it's 100% possible.



TRAVEL & TOURISM

LEVEL 1

INTRODUCTION TO BUSINESS AND TRAVEL SKILLS

Course Duration: 1 Year
Assessment: Portfolio of evidence
Entry Requirements: 4 GCSEs grades 1-2

Units you may study include:

- Customer service skills
- Digital marketing
- Supporting business meetings
- Communication skills for work
- Airline services
- Planning a trip to a visitor attraction
- The UK travel industry
- Working in travel and tourism

Progression routes include:

- Progression onto other Level 2 programmes
- Employment
- Apprenticeship

LEVEL 2

EXTENDED CERTIFICATE IN TRAVEL AND TOURISM

Course Duration: 1 Year
Assessment: 100% Coursework
Entry Requirements: 4 GCSEs grades 2-3

Units you may study include:

- Travel and tourism destinations
- Customer service
- Specialist tourism
- Hospitality
- Introduction to travel and tourism industry

Progression routes include:

- Progress on to Level 3 Certificate in Travel and Tourism
- Employment
- Apprenticeship

LEVEL 2

DIPLOMA IN INTRODUCTION TO CABIN CREW

Course Duration: 1 Year
Assessment: 100% Coursework
Entry Requirements: For students 17 and over. 4 GCSEs grades 2-3

Units you may study include:

- Airline health, safety, and security
- Aircraft emergency situations
- Dealing with passengers on-board an aircraft
- Cabin service - selling techniques
- Making passenger announcements on board an aircraft
- Investigate employment opportunities for resort representatives
- Prepare for the start of the holiday season
- Manage airport and transport duties

Progression routes include:

- Progress on to Level 2 Extended Certificate or Level 3 Certificate in Travel and Tourism
- Employment
- Apprenticeship

LEVEL 2

CERTIFICATE IN AVIATION ENVIRONMENT

Course Duration: 1 Year
Assessment: Portfolio work
Entry Requirements: GCSE maths and English grades 2-3

Units you may study include:

- Health and safety in aviation
- Aviation security
- Aviation communications
- Customer service in aviation
- Problem solving in aviation
- Sales skills
- Check-in process and travel documentation
- Passenger baggage processing
- Passengers with special needs
- Ground service operations
- Loading and unloading
- Aircraft marshalling
- Dangerous goods
- Aircraft turn around

Progression routes include:

- Employment
- Further Education
- Apprenticeship

CAREERS...

- Air Cabin Crew
- Hotel Manager
- Tour Manager
- Tourist Information Centre Manager
- Travel Agency Manager
- Events Manager
- Customer Services Assistant
- Sales Executive
- Conference Centre Manager
- Holiday Representative
- Hospitality Assistant/Manager
- Hotel Porter
- Tourism Officer
- Travel Journalist
- Wedding Planner
- Cruise Ship Steward

AND MUCH MORE...

Example careers:

Travel Agent	Avg £
Air Travel Assistant	£20,787
Events Manager and Organiser	£23,376
Air Transport Operative	£23,050
	£26,141

Career and salary data powered by Lightcast™
 September 2025

LEVEL 3

CERTIFICATE IN TRAVEL AND TOURISM

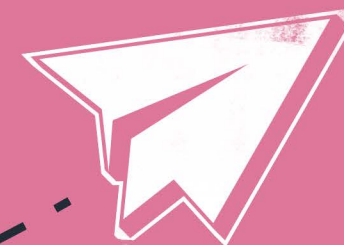
Course Duration: 1-2 Years
Assessment: 100% Coursework
Entry Requirements: 4 GCSE grades 4 and above including English and maths
(Two years) Equivalent to: Two A Levels

Units you may study include:

- The UK travel and tourism industry
- Customer service in travel and tourism
- Preparing for a career in travel and tourism
- Travel and tourism destinations
- Resort representative roles and responsibilities
- Investigating air cabin crew
- Worldwide passenger airlines

Progression routes include:

- University
- Employment
- Apprenticeship



UNIFORMED SERVICES & POLICING

Make a real difference.

Thinking of a career that's active, rewarding, and makes a real difference? Join the over 180,000 people currently working in the UK armed forces¹.

Although one path, these courses aren't just about the military. You could go on to work in the police, fire service, border force, fitness and personal training, schools, or many other areas where discipline, teamwork and leadership matter.

At North Lindsey College, you'll build your physical fitness in our on-site gym, take part in industry-focused trips, and have the chance to complete the Duke of Edinburgh's Award - a favourite among our students.

We'll help you develop key employability and digital skills to boost your CV, UCAS application or job prospects, wherever your path takes you.

¹Source: gov.uk (Quarterly service personnel statistics 1 April 2024: Updated 2024)



We went on exciting trips like abseiling in the Peak District, hiking, and engaging PT sessions. But the **international trips were the highlight for me.** Visiting places like Auschwitz in Poland and Sachsenhausen in Germany was **deeply educational and eye-opening experiences I'll never forget.**

HARRY MOODY

After leaving Winterton Community Academy, Harry chose the Uniformed Services course at North Lindsey College as the perfect pathway to pursue his career ambitions. The course aligned closely with his passions, offering a wide range of activities including hiking, physical training sessions, and health and fitness education.

It also provided strong academic support, teaching valuable skills such as how to write professional essays and assignments—essential preparation for those aiming to progress to university. One standout feature for Harry was having a tutor who was an ex-Paratrooper, which added a real-world edge to the course.

Harry has since gone on to become an On-Call Firefighter with Humberside Fire and Rescue Service, proudly serving his local community. He now aims to secure a full-time career in the fire service.



UNIFORMED SERVICES & POLICING

LEVEL 1

AWARD IN SPORT & UNIFORMED SERVICES

Course Duration: 1 Year
Assessment: 100% coursework and practical skills
Entry Requirements: This study programme is designed for students who have not achieved a grade 4 at GCSE in maths and English

- Units you may study include:**
- Taking part in exercise and fitness
 - Planning own fitness programme
 - Preparing for an interview
 - Working in a team
 - Participating in sport of active leisure activities
 - Anatomy and physiology
 - Planning a healthy diet
 - Employability skills and technical skills

- Progression routes include:**
- Progression on to other Uniformed Services courses
 - Employment
 - Apprenticeship

LEVEL 2

DIPLOMA IN UNIFORMED & PUBLIC SERVICES

Course Duration: 1 Year
Assessment: 100% coursework and practical skills
Entry Requirements: Grade 3 in English and maths. Level 1 Uniformed Services Qualification

- Units you may study include:**
- Employment in uniformed services
 - Physical fitness for the uniformed services
 - Develop teamworking and problem solving skills
 - Health and safety in the uniformed services
 - Health and hygiene in the uniformed services
 - Follow uniformed service routine
 - Exploring equality and diversity for the uniformed services
 - Participating in competitive sports
 - Explore the use of telecommunications

- Progression routes include:**
- Progression on to Level 3 Extended Diploma for entry to Uniformed Services
 - Employment

LEVEL 3

EXTENDED DIPLOMA FOR ENTRY TO UNIFORMED SERVICES

Course Duration: 1-2 Years
Assessment: 100% coursework and practical skills
Entry Requirements: Minimum grade 4 maths and English
(Two years) Equivalent to: Three A Levels

- Units you may study include:**
- Preparing for a career in uniformed services
 - Developing aspects of physical fitness for entry to the uniformed services
 - Carrying out map reading and navigation across open country
 - Outdoor and adventurous expeditions
 - Telecommunications in the uniformed services
 - Volunteering in the uniformed services
 - Conflict management
 - Crime scene investigation
 - Hierarchy of the services
 - Security procedures
 - Collaboration between uniformed services
 - War and conflict
 - Understanding discipline
 - Mental and physical well-being
 - Skills for land based and water outdoor and adventure activities
 - Employability skills

- Progression routes include:**
- University
 - Employment - Uniformed Services
 - Apprenticeship
 - Progression to University Campus North Lincolnshire (UCNL)

Apply Now!



CAREERS...

- Aid Worker
- Army Officer
- Bodyguard
- Border Force Officer
- Chief Inspector
- Civil Enforcement Officer
- Coastguard
- Diver
- Dog Handler
- Door Supervisor
- Fingerprint Officer
- Firefighter
- Immigration Officer
- Merchant Navy Deck Officer
- Police Officer
- Prison Officer
- RAF Airman or Airwoman

- RAF Non-Commissioned Aircrew
- RAF Officer
- Road Traffic Accident Investigator
- Royal Marines Commando
- Royal Marines Officer
- Royal Navy Officer
- Royal Navy Rating
- Scenes of Crime Officer
- Search and Rescue Worker
- Security Service Personnel
- Security Manager
- Security Officer
- Soldier

AND MUCH MORE...

Example careers:	Avg £
Police Officer	£41,775
Fire Service Officer	£41,673
Probation Officer	£30,574
Prison Service Officer	£34,423

Career and salary data powered by Lightcast™
September 2025



LEVEL 3

EXTENDED DIPLOMA IN POLICING

Course Duration: 1-2 Years
Assessment: 100% coursework and practical skills
Entry Requirements: Minimum grade 4 maths and English
(Two years) Equivalent to: Three A Levels

- Units you may study include:**
- Prepare for a career in the police service
 - Develop leadership skills
 - Develop aspects of physical fitness
 - Values and standards in the police service
 - Understand conflict management and personal protection
 - Understand discipline in the police service
 - The development of the UK police service
 - Dealing with emergency incidents
 - Preparation for Higher Education
 - Collaboration between the emergency services
 - Emergency planning and response in the police service
 - UK legal systems and the police service
 - Crime scene investigation
 - ICT in the police service
 - Neighbourhood policing
 - Understanding mental health
 - Carry out map reading and navigation across open country

- Progression routes include:**
- University
 - Employment - Police
 - Apprenticeship
 - Progression to University Campus North Lincolnshire (UCNL)

APPRENTICESHIPS

Earn while you learn

and get a head start in your career.

We work with some of the largest employers in the country who choose DN Colleges Group as their preferred provider of high-quality apprenticeships.

What is an apprenticeship?

An apprenticeship offers you the chance to study and work at the same time. This allows you to earn a wage whilst gaining qualifications and valuable industry experience. Unlike most traditional full-time courses, DN Colleges Group offer 'roll-on roll-off' courses, which means there are opportunities to enrol at various points throughout the academic year.

When can I apply for an apprenticeship?

You can apply for an apprenticeship at any stage including:

- When you leave school
- During an existing course if you choose to swap courses
- After leaving college
- As an adult learner, later in your career

How do I apply for an apprenticeship?

- Via the UCAS website
- By visiting the 'find an apprenticeship' service website (Find an apprenticeship - gov.uk). As an apprenticeship is a job with training, the key to initial success is being able to research opportunities and ensure you prepare well for apprenticeship interviews with employers.
- Or contact the team using the details below to register for the latest vacancies

More information

If you would like more information regarding apprenticeships, please contact the Apprenticeship Hotline on: **0800 3587979** or by emailing **employerttraining@dncolleges.ac.uk**



“

I couldn't recommend an apprenticeship enough. I have not only gained valuable experience but some fantastic additional qualifications. You are able to **develop key workplace skills** and surround yourself with a range of **knowledgeable subject specialists** in your chosen industry, who **support your personal development.**

AURELIA PEARSON

Former Tollbar Academy student, Aurelia is currently completing a Level 3 Safety, Health, and the Environment Technician apprenticeship at RWE.

Now in mid-way through the qualification, Aurelia spends lots of her time getting hands-on in her learning, and has recently led an industry-first and award-winning project that saw her release 2,500 juvenile lobsters into their windfarm to promote biodiversity in the North Sea.

Since starting her apprenticeship, Aurelia has been lucky enough to travel as far as Copenhagen for team meetings with her international colleagues, expanding her network further than she ever imagined.



APPRENTICESHIPS

How do I find out about apprenticeship opportunities?

Our team at DN Colleges Group can help you identify the type of apprenticeship you would be interested in. We have close links with local employers that require apprentices. We advertise vacancies on our website, as well as on the National Apprenticeship Service website. We also keep in touch with individuals we know are interested in apprenticeships to make sure they know about upcoming vacancies.

What are the benefits of an apprenticeship?

- Gain a nationally recognised qualification that can lead to higher education and further study, as well as improving your career prospects.
- Earn whilst you learn - apprentices are paid at least the national minimum apprentice wage, with many employers paying more.
- No student loan - you can do a higher apprenticeship including higher qualifications, such as a degree, but without needing a student loan.
- Apprentices are fully equipped for the world of work, developing other work skills such as communication, teamwork, and accountability.
- Getting into employment earlier means there's potential for you to progress in your career quickly and increase your earning potential.
- Whilst on your apprenticeship, you will be an employee of a company and entitled to the same benefits as other staff, including holidays.

Apply Now!



HESTA



The Humber Energy Skills Training Academy, based in Hull, is all about helping you build the skills the energy industry needs for a greener future. We offer a mix of further education courses and apprenticeships, giving you hands-on experience and real career opportunities.

We're the only place within 90 miles of Hull where you can train as a Refrigeration, Air Conditioning and Heat Pump (RACHP) apprentice.

Our training links directly to the government's push for net zero and the Humber's Energy Estuary priorities, meaning you'll be gaining skills that are in demand now and in the future. We've also got strong connections with local employers, and many of our students are head-hunted for apprenticeship vacancies.

With small class sizes, a friendly teaching team, and personalised support, you'll get the attention you need to succeed.

Whether you want to move into plumbing and domestic heating, electrical installation and maintenance, or take your first steps into building services, the Humber Energy Skills Training Academy is a great place to start your journey.

- **Level 2 Diploma in Building Services Engineering**
- **Level 3 Installation & Maintenance Electrician Apprenticeship**
- **Level 3 Maintenance & Operations Engineering Technician - Refrigeration/Air Conditioning Pathways**

Find out more!



THE DUKE OF EDINBURGH'S AWARD

Taking part in a DofE journey will give you **skills, confidence, and something to talk about** when you apply for college, university or a job.

Beyond your academic achievements, employers and universities want to see evidence of 'soft skills' that you have developed through extra-curricular activities, such as communication, commitment, leadership and teamwork. Your DofE Award is a fantastic way to demonstrate and evidence these skills in practice.

Since offering the DofE award in 2017, we have had over 1700 students at DN Colleges Group take part in a DofE award with engagement numbers rising each year.

You will complete your award within your college timetable and be given step by step support from your course tutors and the DofE team.

Have an opportunity to get involved with volunteering, playing new activities, such as benchball, dodgeball, archery and arrow tag, and further develop on your soft skills preparing for employment.

At the end of the year, you will have an opportunity to complete your camping and hiking expedition which is the area students most look forward to.

You will learn all the skills to prepare you for expedition and receive full support through completing other sections of your award from our in-house DofE team. What are you waiting for... step outside your comfort zone, meet new friends and become a new you.

"

Stacey (DofE Leader) made the whole experience **so enjoyable** for me, and honestly, **I'm a completely different person now** compared to when I first started at North Lindsey College. Taking part in DofE helped me become a **better version of myself** and proved that I can shape my future without letting doubts or uncertainties hold me back.

SAFFRONSTEPHEN



ENRICHMENT

More than classes:
Make college an adventure.

At North Lindsey College, learning isn't just about the classroom – it's about experiences that help you grow, have fun, and try new things. Throughout the year, there's a wide range of activities for you to get involved in, from guest speakers, career and job workshops, and student finance sessions, to escape rooms, charity fundraisers, trips, visits, sports teams, clubs and societies.

There's also plenty of hands-on, active, and team-focused fun to get involved in. Try your hand at archery, arrow tag, team challenges, bench-ball, rounders, fencing, or water sports – there's something for everyone!

If you're looking for a bigger challenge, you can take part in the Duke of Edinburgh's Award, which helps you build confidence, leadership skills, independence, and life experience.

Want to know more? Get in touch with Stacey Blackwell (DofE and Sport & Enrichment Coordinator) via email at: stacey.blackwell@dnccolleges.ac.uk

Keep an eye on our socials for the latest updates!



WELLBEING AND SUPPORT



Here for you,
every step of the way.

In order to give you the best possible chance to reach your next chosen destination, whether that be the world of work, furthering your career or into higher education, there are other elements of your study programme you will have to complete. This will include enrichment activities that are appropriate to your chosen course - such as attending guest speaker events, industry pop-ups or taking part in visits and tours.

Weekly timetabled personal development sessions take place which are built around a scheme of learning consisting of five core modules (Safeguarding, Prevent and British Values; Online Safety; Health and Wellbeing; Money Matters and Preparing for Work/Further Learning). These sessions are delivered by a specialist team of personal development facilitators and include essential learning about british values, staying safe on-line, equality and diversity along with student choice sessions, social action projects and workshops to boost your citizenship skills and enable you to become future ready.

Counselling

Our team of qualified counsellors are available if you are ready to work on your emotions and wellbeing in a structured supportive environment.

Safeguarding

Safeguarding is everyone's responsibility. We have a dedicated team who are on hand to respond to any identified concerns regarding someone's safety or emotional, physical, or mental wellbeing. Anyone who is worried or has a concern must speak to a member of the Safeguarding Team who will help.

Wellbeing Intervention Coaches

We provide individual support with many things such as encouraging your attendance, progression, and helping you address any problems or difficulties. Coaches work with students in subject areas, with Wellbeing Centres offering drop-in support and emergency provisions.

Equality, diversity, and inclusion

We are deeply committed to Equality, Diversity, and Inclusion (EDI), ensuring that every student feels respected, valued, and empowered to do fulfil their aspirations.

We foster a welcoming environment where individual differences are celebrated, and everyone has equal access to opportunities and support. The safety and wellbeing of our students are at the heart of everything we do.

We take a proactive approach to safeguarding, and our preventing sexual harassment in the learning environment policy ensures a clear, robust framework for preventing and addressing any form of harassment. Our staff are trained to uphold these standards, creating a respectful, supportive, and secure space for all members of our college community.



WORK EXPERIENCE & INTERNATIONAL

Skills for life, not just for college.

Work experience is an invaluable opportunity for you to gain an insight into the world of work. We believe that learning takes place both in the classroom/workshop as well as through outside experiences with employers. All students across every subject area are supported to undertake work experience placements. The placement will be focused on developing the relevant practical and technical skills required for a profession or trade that you will be studying.

We have a full team of work placement officers who will support you and assist you in finding work placement, ensuring you get the most out of your experience. Our students have been involved in some fantastic community projects. We work with a wide range of employers across various sectors within the local area and outside of our region, all of which offer exciting opportunities to work on real projects. The use of placements in business and industry help develop skills and attitudes needed for employment.

In addition, employer led projects, subject related visits and guest speakers help to bring the workplace into your study programme.

We are also able to offer the incredible chance of international work experience, a fantastic opportunity to develop both your personal and professional skills, whilst experiencing work and life in a whole new culture.

This is why we work with the Turing Scheme to be part of their exchanges, supporting you with the opportunity of a lifetime to work abroad with one of our many partner colleges and organisations in the following countries:

- | | |
|---------------|------------|
| ➤ Fiji | ➤ Portugal |
| ➤ Finland | ➤ Spain |
| ➤ France | ➤ St Lucia |
| ➤ Germany | ➤ USA |
| ➤ Greece | ➤ Bali |
| ➤ Indonesia | ➤ Belgium |
| ➤ Netherlands | ➤ Thailand |

The Turing Scheme

This UK government scheme provides funding towards international education and training around the world. Students, including those on an apprenticeship, can study, work, and take part in skills competitions abroad.

Our international team will be happy to help guide you through the process and the opportunities available.

Ask your tutor when you start, or email international.team@dnccolleges.ac.uk



CAREERS

SHINE

Turn big dreams into real plans.

We pride ourselves on offering impartial and unbiased careers education, information, advice, and guidance to help you with your College, course and careers choices. It is important you receive careers advice before selecting your course option, so you fully understand how the qualifications you apply for will help you in the future. Getting the right advice will help you make the right choices for you. The Careers team, endorsed with the 'Quality In Careers' and 'Matrix' accreditations are there for you also whilst you're a student, supporting decisions about next steps into work/apprenticeships, further study or university.

Everyone is different, so the advice given to one person will not be useful for others (such as friends or family members); so individual careers advice is something you should get.

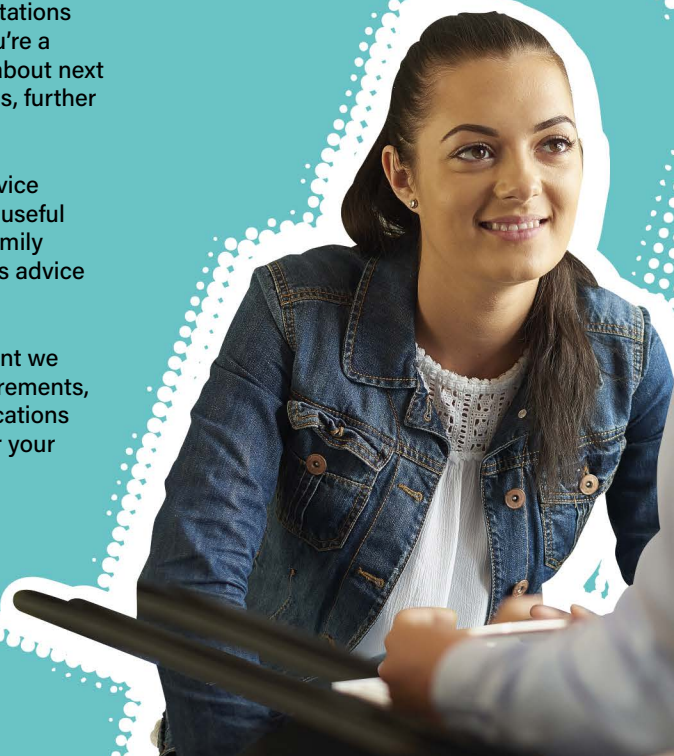
During your careers appointment we will discuss subject entry requirements, careers you can use the qualifications for, and how best to prepare for your transition to and from College.

The team can help you:

- Find out about courses on offer
- Recognise the skills you already have and what additional skills we can help you to develop
- Create an action plan to help you take your next steps

Contact the team for:

- A one-to-one appointment
- A personalised College tour



GCSE ENGLISH & MATHS

Your passport to uni, work & beyond.

We aim to ensure that all learners improve their confidence and competence in English and maths skills sufficiently enough so that they can thrive in their academic or vocational ambitions and in many aspects of their personal life. As such, English and maths are an essential part of your studies here at North Lindsey College.

Employers and universities really value these key qualifications, so it is important we help you achieve them. If you do not have a pass in either or both subjects, then do not worry!

As a mandatory part of your study programme, you will work towards achieving a GCSE grade 9-4 (A*-C) with the help of our specialist tutors, alongside studying your chosen subject with us. If you have a grade 3-1 in either or both subjects, you will be enrolled onto our GCSE programme. If this is not the case, our staff will assess your current level and you may be enrolled onto a more suitable Functional Skills Programme, which will still teach you the same skills needed for everyday life, studies and employment.

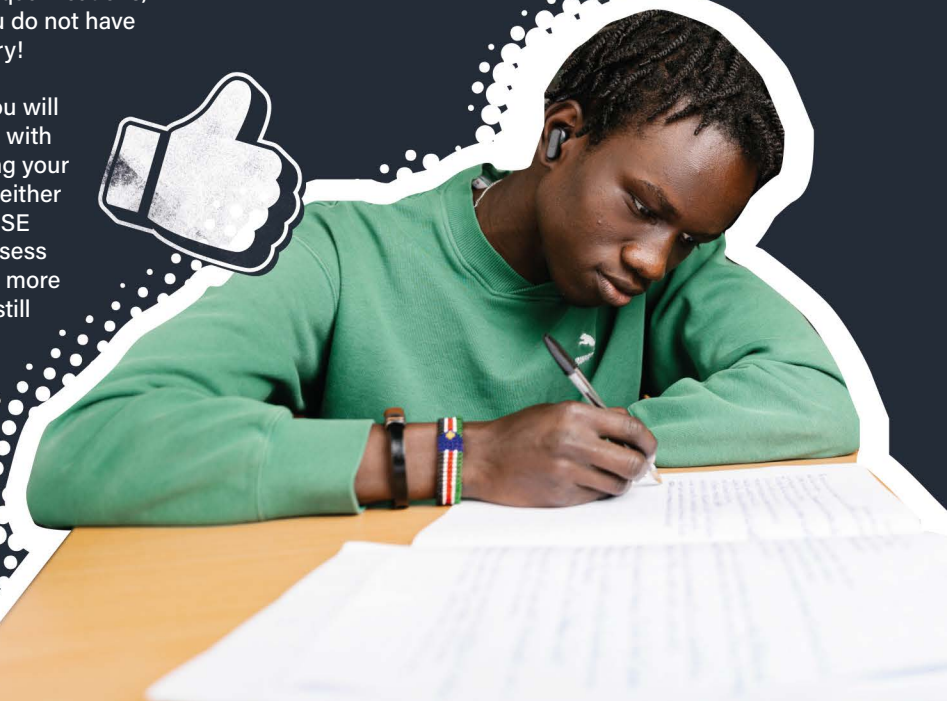
Learners who have achieved a grade 4 or above in English and maths will continue to develop their skills via the embedding of English and maths in their main aim curriculum lessons.

Most employers and universities look for at least a grade 4 (C) in GCSE English and maths.

Increase your potential earnings: People with good GCSE grades in English and maths earn approximately £2,000 more per year than those who do not!

Why Study English & Maths?

These skills can help you understand your finances, communication, and help you gain a better understanding of current issues, including politics and current affairs as well as supporting you to excel in your main aim and then into the world of work. Not having these qualifications can sometimes be a real barrier for the future.



TRAVELLING TO COLLEGE

Your ticket to college life.

You don't need to worry about how you will get to College. Our students can access bus routes covering a wide range of areas including (and everywhere in-between):

- Scunthorpe
- Gainsborough
- Grimsby
- Immingham
- Goole
- Barton
- Isle of Axholme
- Cleethorpes
- Brigg

If you are **aged between 16 to 18** and you **live between 1 - 3 miles** you may be eligible for support through Financial Assistance towards weekly mega-rider tickets.

If you **live more than 3 miles** from college, we can help subsidise your travel.

- Bus passes for North Lincolnshire residents cost £90* for the academic year or can be paid in three instalments of £30

- Bus passes for all other local areas outside of North Lincolnshire cost £400* for the academic year or can be paid in three instalments of £150 for term one and £125 for terms two and three**

*Current costs and may change

**Returning students who were issued a bus pass in 2024/25 who live outside of North Lincolnshire will be charged £150 for the academic year or can be paid in three instalments of £50.

Check out bus routes & times



If you are **over 19** and if you **live over 2 miles** from College, you do not qualify for a bus pass, however we can support you with the travel costs through the College's Financial Assistance Fund. We can support with bus/train tickets refunds, or petrol costs dependant on your mode of transport.

If you're unsure about the route you need to take, how to apply for your bus pass or have any other concerns about travel please get in touch on **01724 294179** or email **financial.support@dncolleges.ac.uk**



JLC 1

Drax

- Snaith
- Rawcliffe
- Rawcliffe Bridge
- Moorends
- Thorne
- Fishlake
- Stainforth
- JLC

JLC 3

Doncaster

- Cantley
- Branton
- Auckley
- Finningly
- Blaxton
- Hatfield Woodhouse
- JLC

JLC 4

Armthorpe

- Edenthorpe
- Kirk Sandall
- Barnby Dun
- Dunscroft
- Hatfield
- JLC

JLC 5

Swinfleet

- Santoft
- Westgate
- East Butterwick
- JLC

JLC 6

Holton-le-Clay

- New Waltham
- Cleethorpes
- Grimsby
- Great Coates
- Healing
- Stallingborough
- Immingham
- South Killingholme
- Ulceby
- JLC

JLC 7a

Lincoln

- Dunholme
- Middle Rasen
- Market Rasen
- Newtoft
- Nomanby-by-Spital
- Glenthams
- JLC

JLC 7b

Bishop Norton

- Snitterby
- South Kelsey
- Mooretown
- Caistor
- North Kelsey Moor
- North Kelsey
- Searby
- Cadney
- JLC

JLC 8

New Holland

- Elsham
- Bonby
- Horkstow
- Appleby
- JLC

JLC 9

Saundby

- Beckingham
- Blyton
- Laughton
- Scotter Common
- Scotton
- JLC

21 Transport 60

Whitton

- West Halton
- Coleby
- Thealby
- Burton upon Stather
- Normanby
- Flixborough
- North Lindsey College

Stagecoach 90

Eastoft

- Crowle
- Ealand
- Keadby
- Gunness
- Glover Road

Stagecoach 101

Gainsborough

- Blyton
- Scotton
- Scotter
- Messingham
- Glover Road

Stagecoach 103

Hemswell

- Willoughton
- Blyborough
- Grayingham
- Kirton in Lindsey
- Messingham
- Ashby
- Glover Road

Stagecoach 360/361

Goole

- Swinfleet
- Reedness
- Whitgift
- Ousefleet
- Adlingfleet
- Garthorpe
- Luddington
- Amcotts
- Keadby School
- Althorpe
- Gunness
- Scunthorpe Bus station
- North Lindsey College

Stagecoach 350

Hull

- Thornton
- Newington
- Anlaby Park
- Hessle
- Barton
- South Ferriby
- Winteringham
- Winterton
- Roxby
- Glover road

Stagecoach 560

East Halton

- Goxhill
- New Holland
- Barrow
- Barton
- South Ferriby
- Winteringham
- Winterton
- Roxby
- Glover Road

Hornsby 399

Misterton

- Graizelound
- Westwoodside
- Haxey Co-op
- Owston Ferry
- Epworth
- Belton
- West Butterwick
- Althorpe
- North Lindsey College

Hornsby 640

Melton Ross

- Barnetby
- Wrawby
- Brigg
- Scawby Brook
- Scawby
- Sturton
- Greetwell
- North Lindsey College

2 Way 642

Rebourn

- Hibaldstow
- Sturton
- Scawby
- Broughton
- Glover Road



UCNL

UNIVERSITY CAMPUS NORTH LINCOLNSHIRE

Your gateway to a world of **learning possibilities!**

Offering a diverse selection of courses, from HTQs to degrees and master's programmes, UCNL provides a wide range of subjects to explore.

Studying with us allows you to stay closer to home, helping you save on accommodation and travel costs, while giving you the flexibility to balance your studies with work or family commitments. And the best part? You can proudly graduate right here in your hometown.

With a campus located in the heart of Scunthorpe, you'll have everything you need to excel in your studies and enjoy student life to the fullest.

From our state-of-the-art Lincolnshire Institute of Technology (IoT) facilities, to a pool of expert lecturers and tutors, we offer an inspiring environment where you can engage in learning, training, and experience a real-world sporting setting.

Our qualifications are awarded by top regional universities and national awarding bodies, including the University of Hull, Sheffield Hallam University, University of Huddersfield, and University of Lincoln, as well as Pearson, CMI, CIPD and CIMA, meaning that your final qualifications hold valuable endorsements sought after by employers.

No matter where you're coming from or where you aspire to go, UCNL is the launchpad for your future journey—a welcoming and vibrant place where you can create lasting memories while achieving your goals.



WE OFFER COURSES IN THE FOLLOWING SUBJECTS:

- Animal Welfare Science
- Business and Management
- Construction
- Counselling
- Digital
- Education and Early Childhood Studies
- Engineering
- English and History
- Games Development
- Health and Social Care
- Medical Biosciences
- Mental Health and Wellbeing
- Psychology
- Social Science
- Sport and Exercise
- Special Educational Needs, Disability and Inclusion (SENDI)
- Teacher Training (Lifelong Learning)

**Continue your
journey with us!**



If you feel like you need a change, don't hesitate. I was in my late 30s when I started my degree as a mature student, and now, five years later, my life is completely different, **and I couldn't be happier in my new role.** It took a lot of hard work, but it's rewarding, and I feel like I am contributing something worthwhile to society.

NATHANROBINSON

Nathan felt he had reached his limit in career progression and sought a new direction that embraced his love for writing and local history. This led him to study a BA (Hons) in English and History Studies at UCNL. He found the experience rewarding, enjoying the support of tutors and the chance to learn alongside likeminded peers. After graduating, Nathan began a role as a school librarian, where he has worked for two years. He now helps deliver the literacy programme for KS3 and leads the Accelerated Reader programme, collaborating with the English department to inspire young readers. Studying at UCNL has allowed Nathan to thrive, and his journey continues with exciting opportunities ahead.





Tuesday 14th October 2025 4:30pm - 7pm - Open Event

Thursday 12th February 2026 4:30pm - 7pm - Apprenticeship Event

Tuesday 20th January 2026 4:30pm - 7pm - Open Event

Tuesday 23rd June 2026 4:30pm - 7pm - Open Event

Tuesday 8th September 2026 4:30pm - 7pm - Late Applicant Event

Follow us on social media:



North Lindsey College, Kingsway, Scunthorpe, North Lincolnshire, DN17 1AJ

info@dncolleges.ac.uk

01724 281111

www.northlindsey.ac.uk